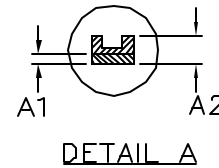
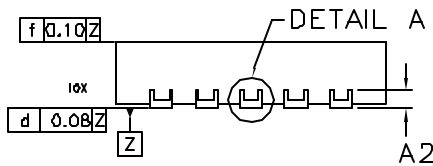
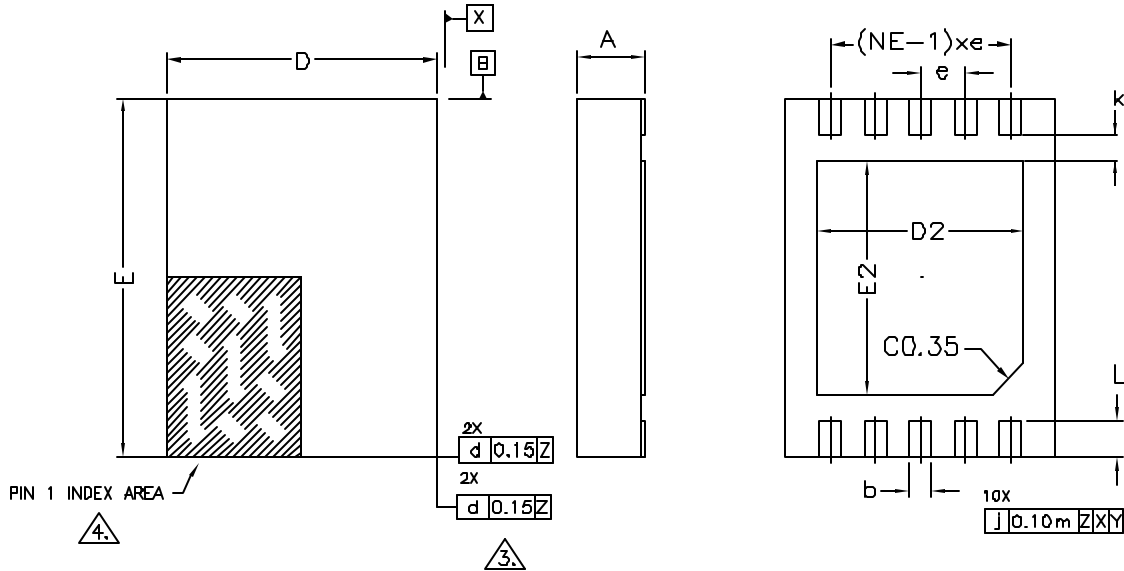


REVISIONS			
LTR	DESCRIPTION	DATE	APPROVED
A	NEW DRAWING	08/06	



NOTES:

- DIMENSIONING AND TOLERANCES PER ASME Y14.5M-1994.
- ALL DIMENSION ARE IN MM, ANGLES IN DEGREES.
- BILATERAL TOLERANCE ZONE IS APPLIED TO EACH SIDE OF THE PACKAGE BODY.
- A1 CORNER MUST BE IDENTIFIED BY INK/LASER MARK ON TOP PACKAGE, AND CHAMFERED PAD ON BOTTOM PACKAGE
- COPLANARITY APPLIES TO THE EXPOSED PAD AS WELL AS THE TERMINALS. COPLANARITY SHALL NOT EXCEED 0.08 mm.
- WARPAGE SHALL NOT EXCEED 0.10 mm.
- REFER JEDEC MO-229.

10 LEAD			
SYM	MIN	NOM	MAX
A	0.70	0.75	0.80
D	2.90	3.00	3.10
E	3.90	4.00	4.10
A1	0.05 MAX		
L	0.30	0.40	0.50
k	0.30 MIN		
A2	0.20 REF		
e	0.50 TYP.		
E2	2.50	2.60	2.70
D2	2.20	2.30	2.40
b	0.20	0.25	0.30
NE	5		

SIGNATURE		DATE					
DUC. CONTROL							
ENGR. VER.				PACKAGE OUTLINE, 10 LEAD TDFN			
MFG. ENGR.				3.0mm X 4.0mm, 0.5mm PITCH			
CHECKED BY: S. CHINNUSAMY		08/06		SIZE	FSCH. NDL	PART. NDL	REV.
DRAWN BY: JFD		08/06		A		56-G0012-001	A
				SCALE	N/A		SHEET 1 of 1