



**DOCUMENT TITLE:  
MARKETING OUTLINE DRAWING 9MM X 11MM, 24 BALLS BGA, 2 LAYER 1.27  
MM PITCH**

**DOC ID # 21-0362                      NEW REV:    A**

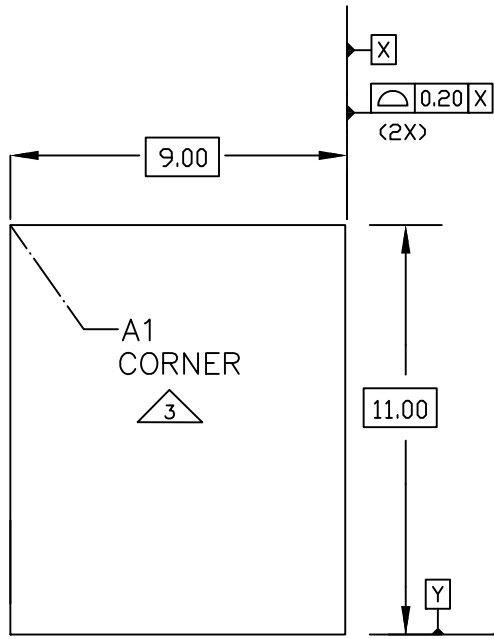
**ECN#: HQ-08-5701                      EFFECTIVE DATE: 07/15/08**

**ORIGINATOR: JEFF WALKER**

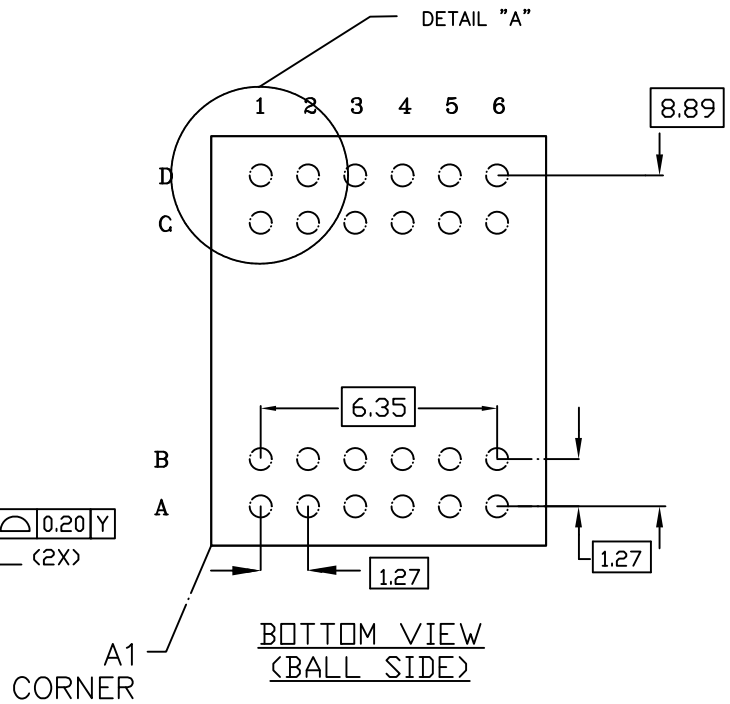
**MOST RECENT CHANGES**

<b>FROM</b>	<b>TO</b>
DALLAS DOCUMENT CONTROL SYSTEM DOC ID# 56-G6022-001 LOGO-DALLAS/MAXIM	INITIAL RELEASE INTO MAXIM DOCUMENT CONTROL LOGO-MAXIM

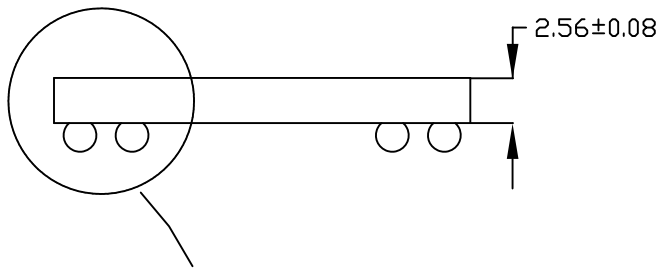
REVISIONS			
LTR.	DESCRIPTION	DATE	APPROVED
A			



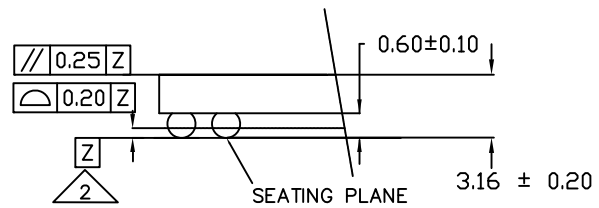
TOP VIEW



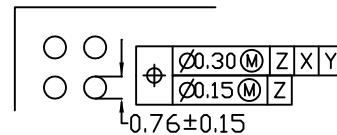
BOTTOM VIEW  
(BALL SIDE)



DETAIL "B"  
SIDE VIEW




DETAIL "B"



DETAIL "A"

NOTES:

1. ALL DIMENSIONS ARE IN MILLIMETERS.
2. PRIMARY DATUM [Z] AND SEATING PLANE ARE DEFINED BY THE SPHERICAL CROWNS OF THE SOLDER BALLS.
3. A1 CORNER MUST BE IDENTIFIED BY LASER MARK ON TOP PACKAGE.
4. BASIC SOLDER BALL PITCH IS 1.27 MM
5. A1 CORNER MUST ALSO BE IDENTIFIED BY METALLIZED MARKINGS ON BOTTOM PACKAGE.

SIGNATURE		DATE		 <b>MARKETING OUTLINE DRAWING</b> <b>9MM X 11MM, 24 BALLS, BGA, 2 LAYER</b> <b>1.27 MM PITCH</b>						
DDC. CONTROL:								TITLE		
ENGR. MGR:								SIZE		A
MFG. ENGR:								FSCM NO.		
CHECKED BY:		TWM		06/03		PART NO.		21-0362	REV.	A
DRAWN BY:		JFD		06/03		SCALE		N/A	SHEET 1 of 1	

### REVISION HISTORY

REV	CHANGES MADE	DATE	INIT.
A	ECN# HQ-08-5701. INITIAL RELEASE INTO MAXIM DOCUMENT CONTROL. LOGO-MAXIM	07/15/08	JW



**TITLE:** MARKETING OUTLINE DRAWING 9MM X 11MM, 24 BALLS  
BGA, 2 LAYER 1.27 MM PITCH

**DOCUMENT I.D.**  
21-0362

**REVISION**  
A

**PAGE 3**