



**DOCUMENT TITLE:**  
**Marketing Outline, 9 Lead LGA (14.00MM X 9.00MM)**

**DOC ID # 21-0265                      NEW REV:    A**

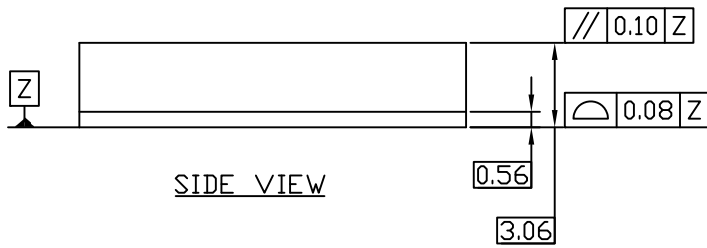
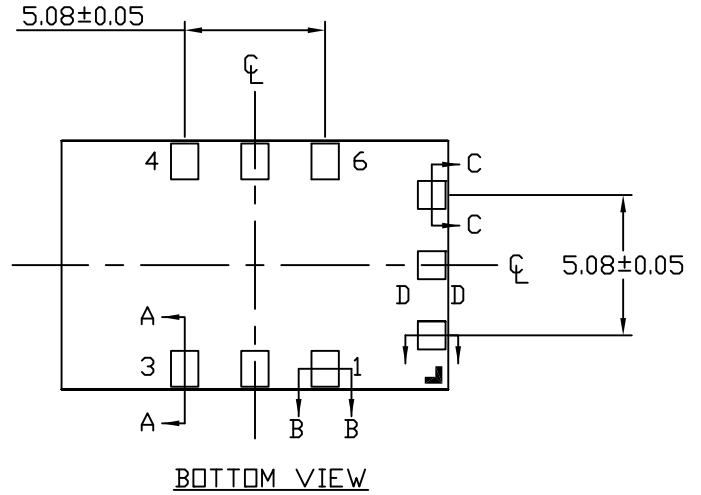
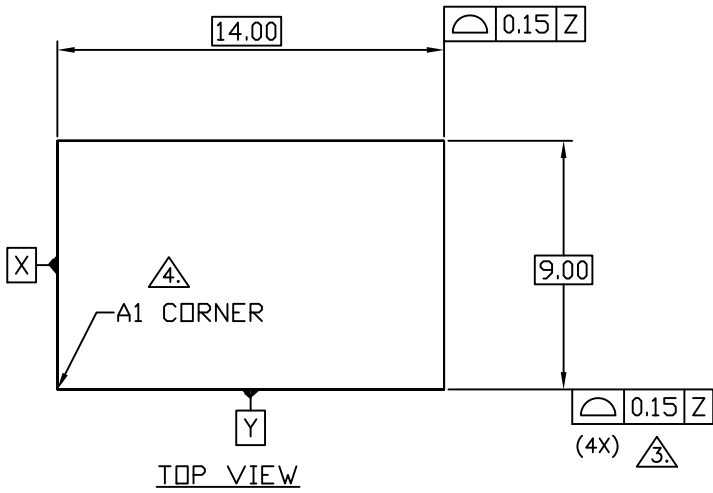
**ECN#: HQ-08-5201                      EFFECTIVE DATE: 06/24/08**

**ORIGINATOR: JEFF WALKER**

**MOST RECENT CHANGES**

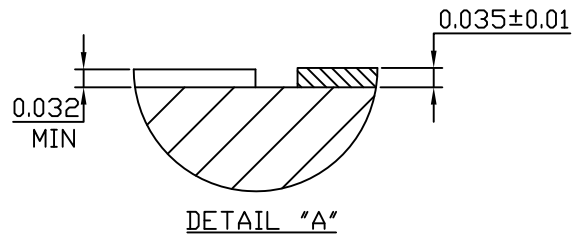
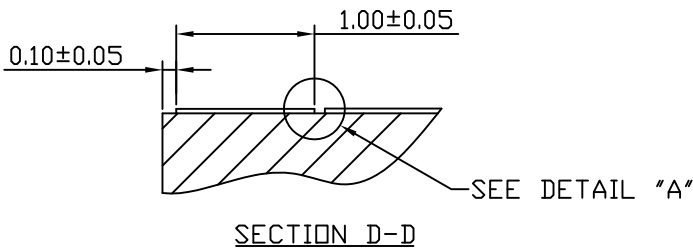
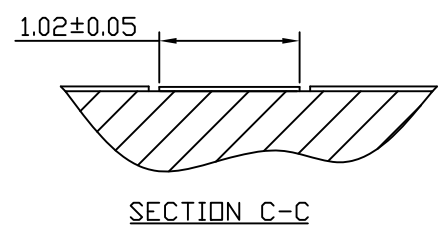
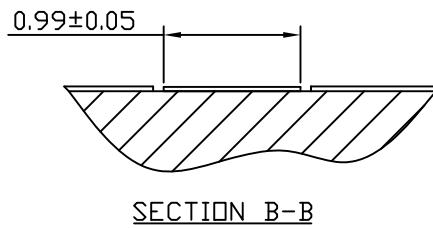
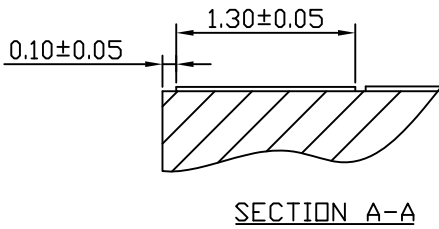
<b>FROM</b>	<b>TO</b>
DALLAS DOCUMENT CONTROL SYSTEM DOC 56-G6034-001, REV A1. LOGO-DALLAS/MAXIM	INITIAL RELEASE INTO MAXIM DOCUMENT CONTROL LOGO-MAXIM

REVISIONS			
LTR.	DESCRIPTION	DATE	APPROVED
A			



NOTES:

1. DIMENSIONING AND TOLERANCES PER ASME Y14.5M-1994.
2. ALL DIMENSIONS ARE IN MILLIMETERS.
3. BILATERAL TOLERANCE ZONE IS APPLIED TO EACH SIDE OF THE PACKAGE BODY.
4. A1 CORNER MUST BE IDENTIFIED BY INK/LASER MARK ON TOP PACKAGE, AND METALLIZED MARKINGS ON BOTTOM PACKAGE



SOLDERMASK AND PAD HEIGHT

SIGNATURE	DATE
DDC. CONTROL:	
ENGR. MGR:	
MFG. ENGR:	
CHECKED BY: D. STORY	07/04
DRAWN BY: JFD	07/04

<b>MAXIM</b>			
TITLE MARKETING OUTLINE, 9 LEAD LGA (14.00MM X 9.00MM)			
SIZE A	FSCM NO.	PART NO. 21-0265	REV. A
SCALE N/A	SHEET 1 of 1		

### REVISION HISTORY

REV	CHANGES MADE	DATE	INIT.
A	ECN# HQ-08-5201. INITIAL RELEASE INTO MAXIM DOCUMENT CONTROL. LOGO-MAXIM	06/24/08	JW



**TITLE:** Marketing Outline, 9 Lead LGA (14.00MM X 9.00MM)

**DOCUMENT I.D.**  
21-0265

**REVISION**  
A

**PAGE**  
3