



**DOCUMENT TITLE:
MARKETING OUTLINE, TO-92, 3-PIN FORMED LEADS**

DOC ID # 21-0250 NEW REV: A

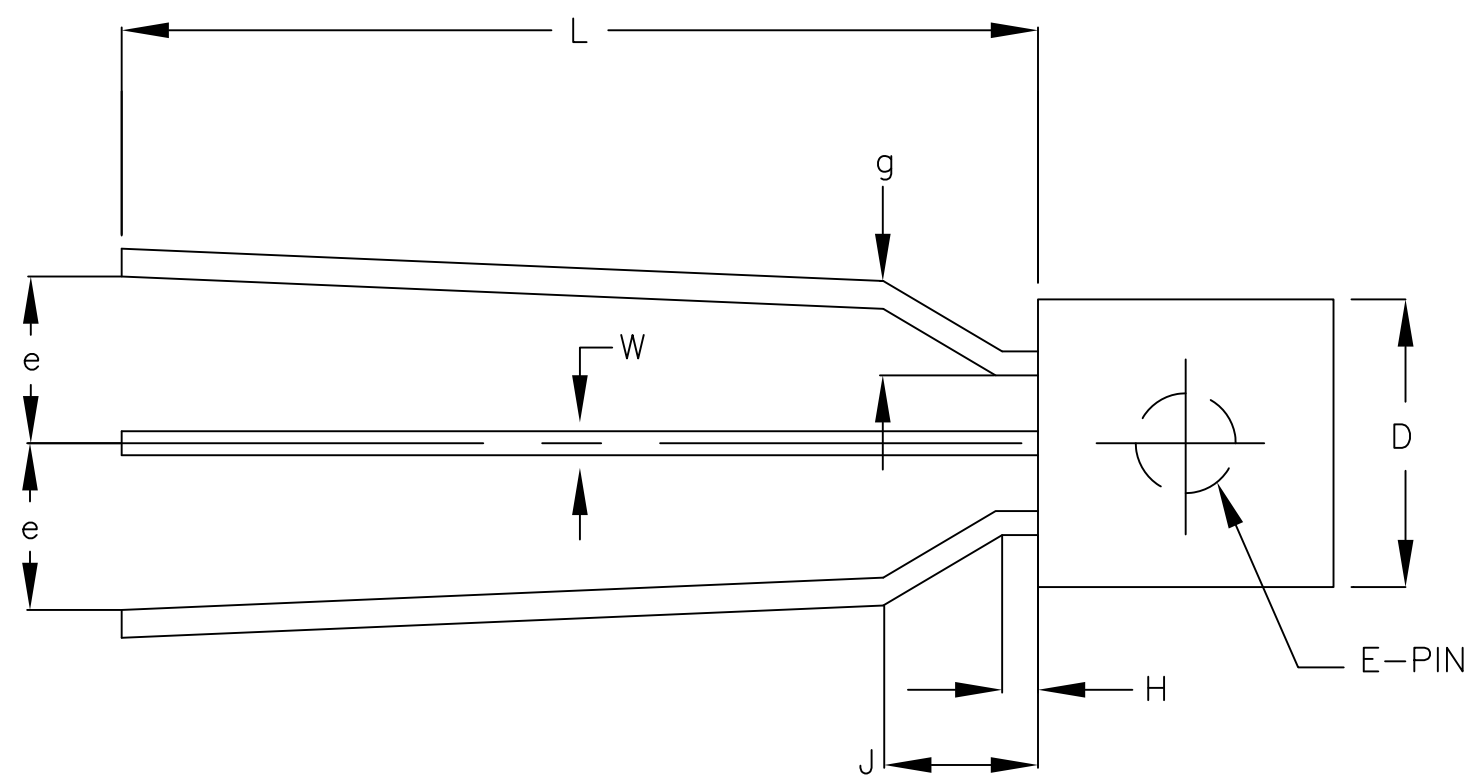
ECN#: HQ-08-5041 EFFECTIVE DATE: 06/23/08

ORIGINATOR: JEFF WALKER

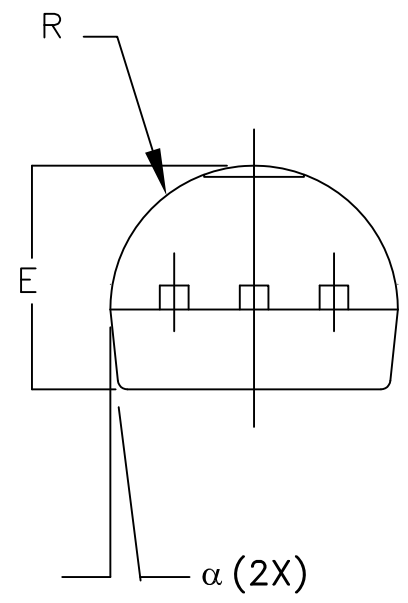
MOST RECENT CHANGES

FROM	TO
DALLAS DOCUMENT CONTROL SYSTEM DOC ID 56-G0006-003, REV A. LOGO-DALLAS/MAXIM	INITIAL RELEASE INTO MAXIM DOCUMENT CONTROL LOGO-MAXIM

REVISIONS			
LTR	DESCRIPTION	DATE	APPROVED
A			



SYMBOL	INCHES		MILLIMETERS	
	MIN	MAX	MIN	MAX
A	.170	.195	4.32	4.95
b	.014	.020	0.36	0.51
E	.130	.155	3.30	3.94
e	.096	.116	2.44	2.94
g	.055	.065	1.40	1.65
L	.495	.610	12.57	15.36
R	.085	.095	2.16	2.41
S1	.045	.060	1.14	1.52
W	.016	.022	0.41	0.56
D	.175	.195	4.45	4.95
H	.015	.030	0.38	0.76
J	.020	.175	0.51	4.45
α	4°	6°	4°	6°



- NOTE:
1. PACKAGE OUTLINE EXCLUSIVE OF ANY MOLD FLASHES DIMENSION.
 2. PACKAGE OUTLINE EXCLUSIVE OF BURR DIMENSION.
 3. CONTROLLED DIMENSION IS INCH.
 4. MEETS JEDEC TO-226 AA.

SIGNATURE	DATE	MAXIM			
ASSY ENGR:					
PROD. ENGR:		MARKETING OUTLINE, TO-92, 3-PIN FORMED LEADS			
DES. ENGR:					
CHECK BY: SC	07/06	SIZE D	FSCM NO	DWG NO 21-0250	REV A
DRAWN BY: JFD	07/06	SCALE N/A			SHEET 1 OF 1

REVISION HISTORY

REV	CHANGES MADE	DATE	INIT.
A	ECN# HQ-08-5041. INITIAL RELEASE INTO MAXIM DOCUMENT CONTROL. LOGO-MAXIM	06/23/08	JW



TITLE: MARKETING OUTLINE, TO-92, 3-PIN JFORMED LEADS

DOCUMENT I.D.
21-0250

REVISION
A

PAGE
3