



**COMPONENT LIST (continued)**

DESIGNATION	QTY	DESCRIPTION
R6	1	10Ω, ±5% resistor (0805)
U1	1	DS80C410-FNY networked microcontroller
U2, U3	2	R1LV0408CSB-7LC 512kB RAM
U4	1	AM29LV081B-70EC 1MB flash
U5, U6	2	MAX6365PKA31 reset controller

DESIGNATION	QTY	DESCRIPTION
U7	1	MAX1792EUA18 voltage regulator
U8	1	DS1672U-33 real-time clock
U9	1	DS2502-E48 IEEE MAC address
Y1	1	14.7456MHz crystal
Y2	1	32kHz crystal

**QUICK START**

It is highly recommended that the developer use the DSTINIs400 sockets board in conjunction with the DSTINIm410. The DSTINIs400 was specifically designed to hold the DSTINIm410 and provide the physical interconnects (Ethernet PHY), as well as the 1-Wire, I<sup>2</sup>C\*, SPI™, CAN, and four serial port connectors.

If the developer wishes to implement his or her own design using the DSTINIm410, a 144-pin SODIMM connector such as the Hirose SX6E-144S-0.8SH is required.

The DSTINIm410 must be seated correctly into the DSTINIs400 to ensure a proper connection. Insert the DSTINIm410 into the connector at a 30-degree angle. Place index fingers behind the SODIMM connector and place thumbs on the top edge of the DSTINIm410, pressing firmly until it clicks into place or seats with only a millimeter of gold contact exposed. Press the DSTINIm410 down parallel to the DSTINIs400 until the side arms latch into the center of the semicircular cutouts on the DSTINIm410.

Note that the flash used on the DSTINIm410 limits applications to a maximum of 2x clock multiplier mode with the included 14.7456MHz crystal. Use of the 4x clock multiplier mode results in unstable operations.

**FOR MORE INFORMATION**

TINI platform details can be found at [www.maxim-ic.com/TINI](http://www.maxim-ic.com/TINI). The *TINI Specification and Developer's Guide* (Addison-Wesley, 2001) is an invaluable resource when developing with the TINI platform. Download a free copy from our website at [www.maxim-ic.com/TINIGuide](http://www.maxim-ic.com/TINIGuide).

**DS80C410 INFORMATION**

For more information about the DS80C410 network microcontroller, refer to the DS80C410 data sheet available on our website at [www.maxim-ic.com/DS80C410](http://www.maxim-ic.com/DS80C410).

**ADDITIONAL RESOURCES**

For detailed information about the initial setup and use of the TINI platform, refer to *Application Note 612: Getting Started with the TINIm400 (DS80C410) Verification Module* at [www.maxim-ic.com/appnoteindex](http://www.maxim-ic.com/appnoteindex).

DS80C410 Networked Microcontroller Data Sheet: [www.maxim-ic.com/DS80C410](http://www.maxim-ic.com/DS80C410)

DSTINIm400 Networked Microcontroller Evaluation Board: [www.maxim-ic.com/DSTINIm400](http://www.maxim-ic.com/DSTINIm400)

DSTINIs400/DSTINIs-00x Sockets Evaluation Board: [www.maxim-ic.com/DSTINIs400](http://www.maxim-ic.com/DSTINIs400)

Microcontroller Website: [www.maxim-ic.com/microcontrollers](http://www.maxim-ic.com/microcontrollers)

*\*Purchase of I<sup>2</sup>C components of Maxim Integrated Products, Inc., or one of its sublicensed Associated Companies, conveys a license under the Philips I<sup>2</sup>C Patent Rights to use these components in an I<sup>2</sup>C system, provided that the system conforms to the I<sup>2</sup>C Standard Specification as defined by Philips.*

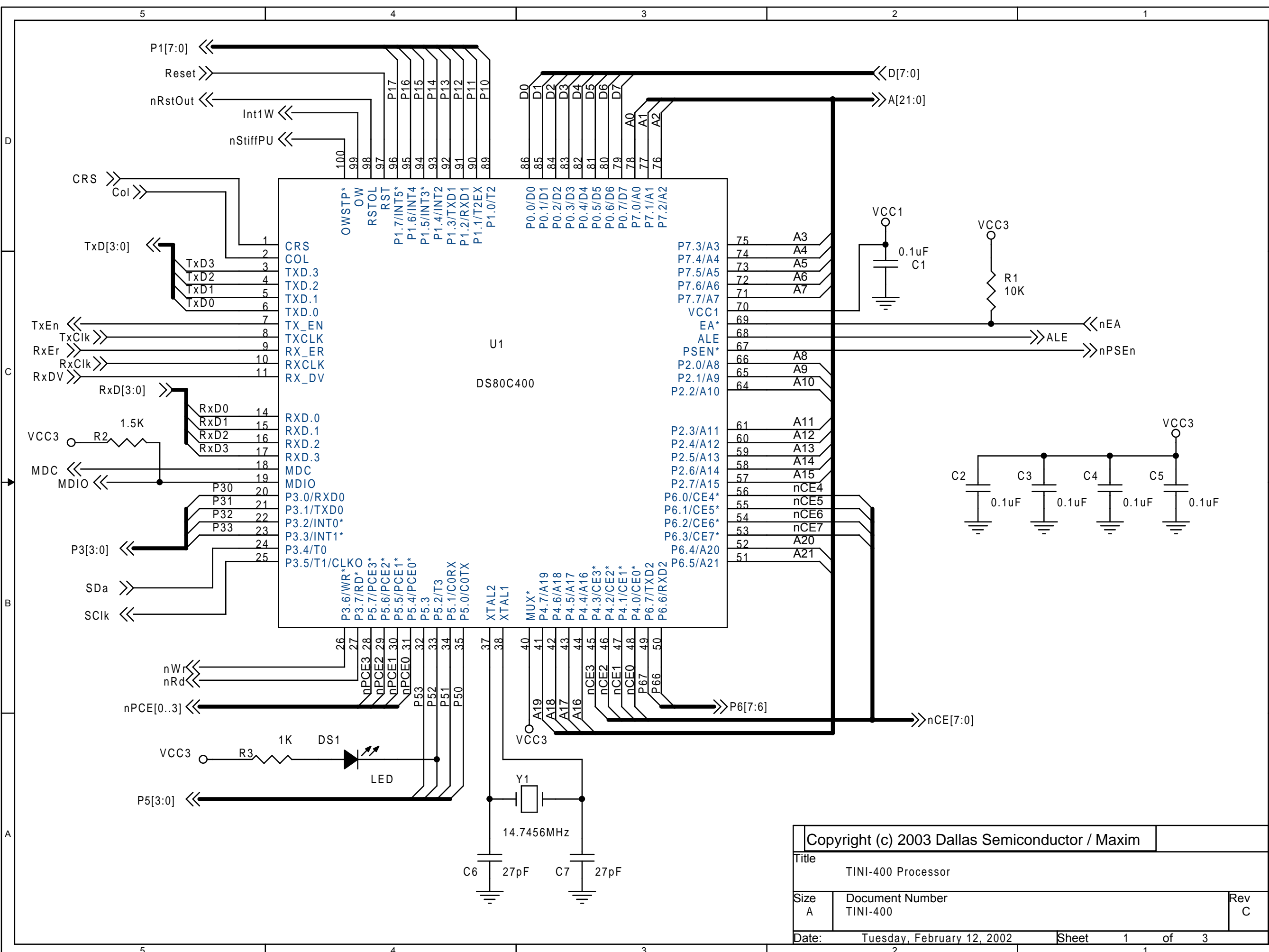
*SPI is a trademark of Motorola Inc.*

*Maxim/Dallas Semiconductor cannot assume responsibility for use of any circuitry other than circuitry entirely embodied in a Maxim/Dallas Semiconductor product. No circuit patent licenses are implied. Maxim/Dallas Semiconductor reserves the right to change the circuitry and specifications without notice at any time.*

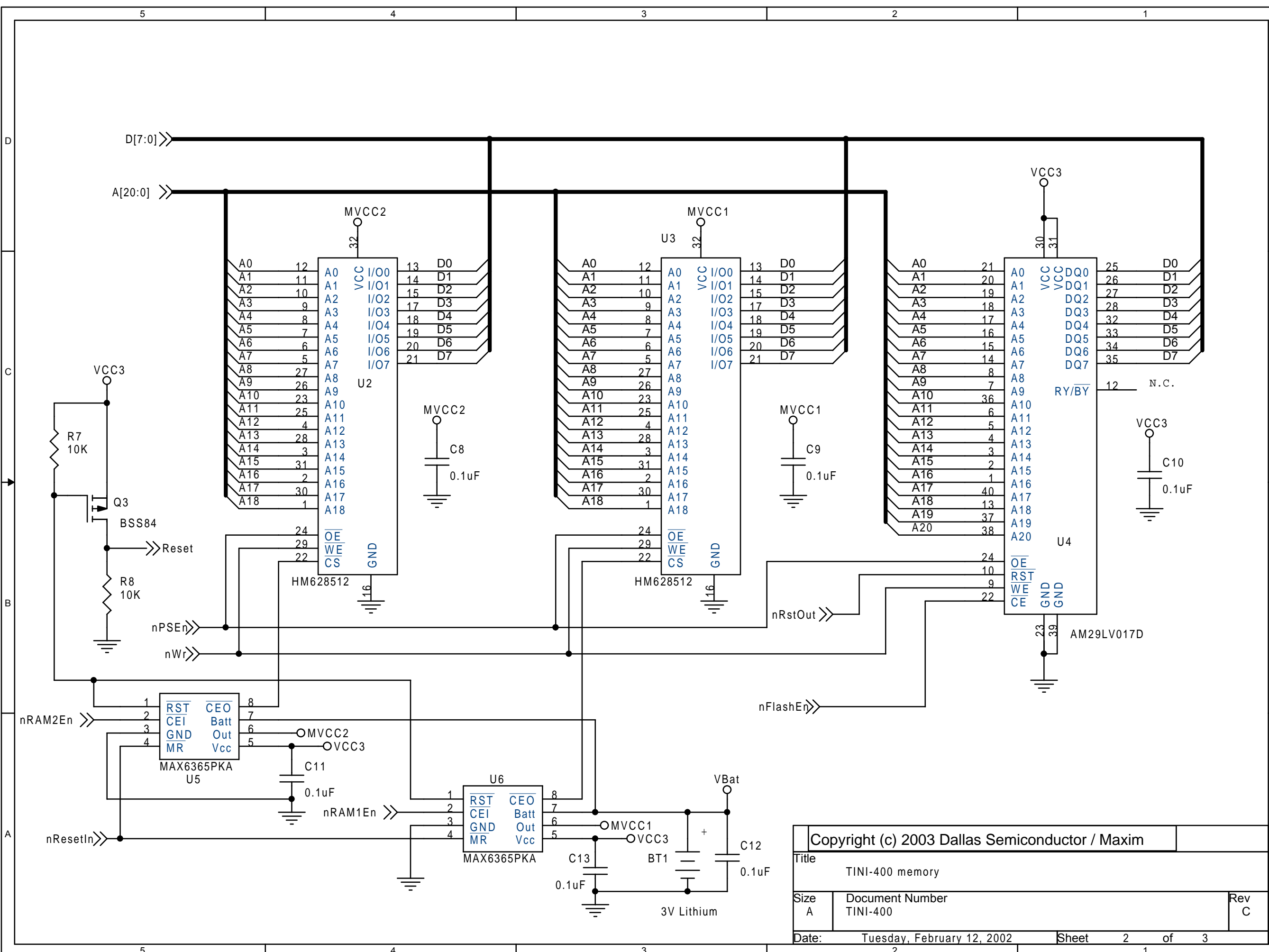
**Maxim Integrated Products, 120 San Gabriel Drive, Sunnyvale, CA 94086 408-737-7600**

© 2006 Maxim Integrated Products • Printed USA

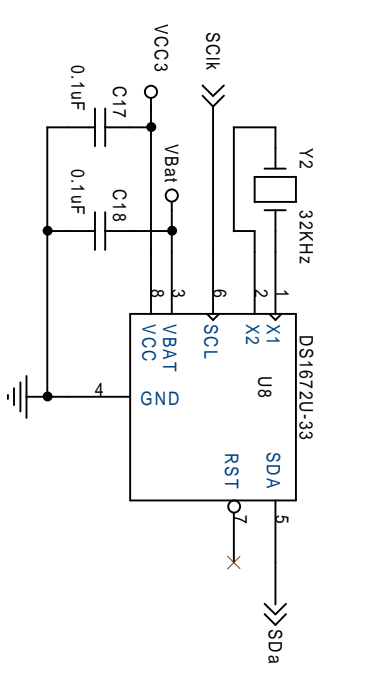
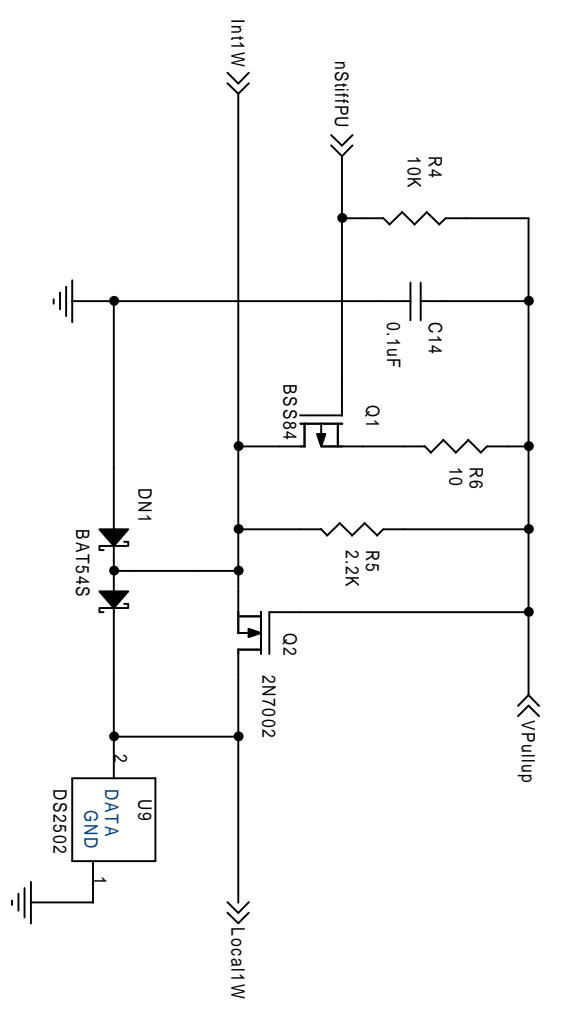
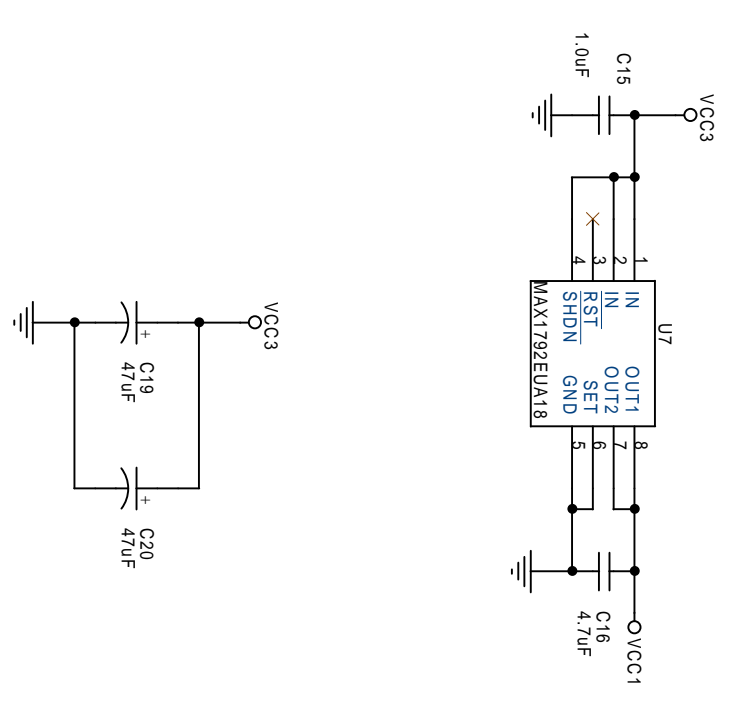
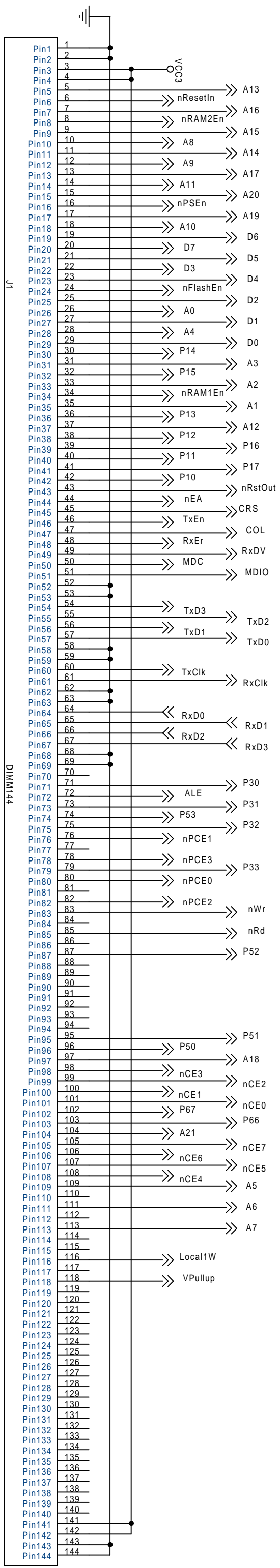
The Maxim logo is a registered trademark of Maxim Integrated Products, Inc. The Dallas logo is a registered trademark of Dallas Semiconductor Corporation.



Copyright (c) 2003 Dallas Semiconductor / Maxim		
Title TINI-400 Processor		
Size A	Document Number TINI-400	Rev C
Date: Tuesday, February 12, 2002	Sheet 1	of 3



Copyright (c) 2003 Dallas Semiconductor / Maxim		
Title TINI-400 memory		
Size A	Document Number TINI-400	Rev C
Date: Tuesday, February 12, 2002	Sheet 2	of 3



Copyright (c) 2003 Dallas Semiconductor / Maxim  
 Title: TINI-400 Connector  
 Size: Document Number  
 B: TINI-400  
 Date: Tuesday, February 12, 2002  
 Sheet 3 of 3