

HIGH-PERFORMANCE SiGe AND BiCMOS ASIC SOLUTIONS

Custom Designed to Your Specifications

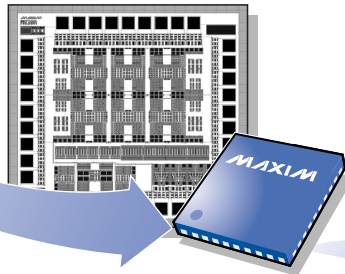
Choose from a Large Selection of High-Frequency Technologies

- ◆ Complementary Bipolar (F_T to 17.2GHz)
- ◆ Bipolar (Trench Isolated, F_T to 27GHz)
- ◆ BiCMOS (Trench Isolated, F_T to 25GHz)
- ◆ SiGe (Trench Isolated, Two Processes, F_T to 125GHz)
- ◆ SiGe BiCMOS (Trench Isolated, Three Processes, F_T to 90GHz)

YOUR CUSTOM NEED



Maxim's UNIQUE SOLUTION



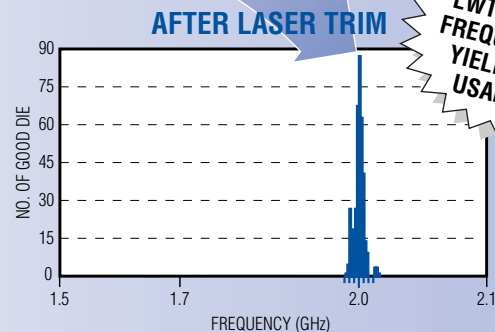
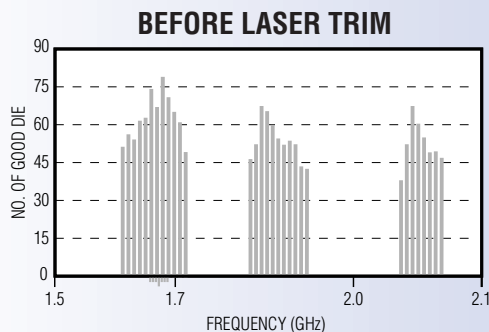
Laser Wafer-Trim (LWT) Technology

Maxim can laser trim to adjust circuit performance or improve yield after wafer fabrication. All our current bipolar and BiCMOS processes support laser trimming at the wafer level. Trimming can be done for absolute accuracy or for dynamic performance.

LWT Advantages

- ◆ Offset, Gain, and Dynamic Range of Amplifier Blocks
- ◆ INL and DNL for Data-Converter Blocks
- ◆ VCO Center Frequency
- ◆ Rise/Fall Time of ATE Pin Electronics
- ◆ Matching of Resistance, Voltage, or Current
- ◆ Adjust Current or Voltage to Set Operating Point

VCO FREQUENCY DISTRIBUTION



MAXIM

www.maxim-ic.com

FREE Wireless Design Guide—Sent Within 24 Hours!

CALL TOLL FREE 1-800-998-8800 (7:00 a.m.–5:00 p.m. PT)

For a Design Guide or Free Sample

MAXIM/DALLAS DIRECT!
DISTRIBUTION
1-888-MAXIM-IC

ARROW
ARROW ELECTRONICS, INC.
1-800-777-2776

AVNET
electronics marketing
1-800-332-8638

Distributed by Maxim/Dallas Direct!, Arrow, Avnet Electronics Marketing, Digi-Key, and Newark.

The Maxim logo is a registered trademark of Maxim Integrated Products, Inc. The Dallas Semiconductor logo is a registered trademark of Dallas Semiconductor Corp.
© 2006 Maxim Integrated Products, Inc. All rights reserved.