

APPLICATION NOTE 942

Load Switcher Draws Only 6 μ A

Abstract: Taking advantage of the IC's very low quiescent current, this circuit enables a small signal of ± 1 mV or more to switch relatively large load currents.

Figure 1's circuit draws only 6 μ A, but it enables a small signal of ± 1 mV or more to switch relatively large load currents. It takes advantage of the IC's very low quiescent current—1.2 μ A (max) per amplifier (less than a typical battery's self-discharge)—which is able to flow through R1 without turning on Q1. When operated with a sensing coil (as shown) and stimulated by a magnet, the circuit performs the function of a reed switch, but with greater sensitivity. Other applications include alarm systems, bipolar threshold sensing, and audio volume switching.

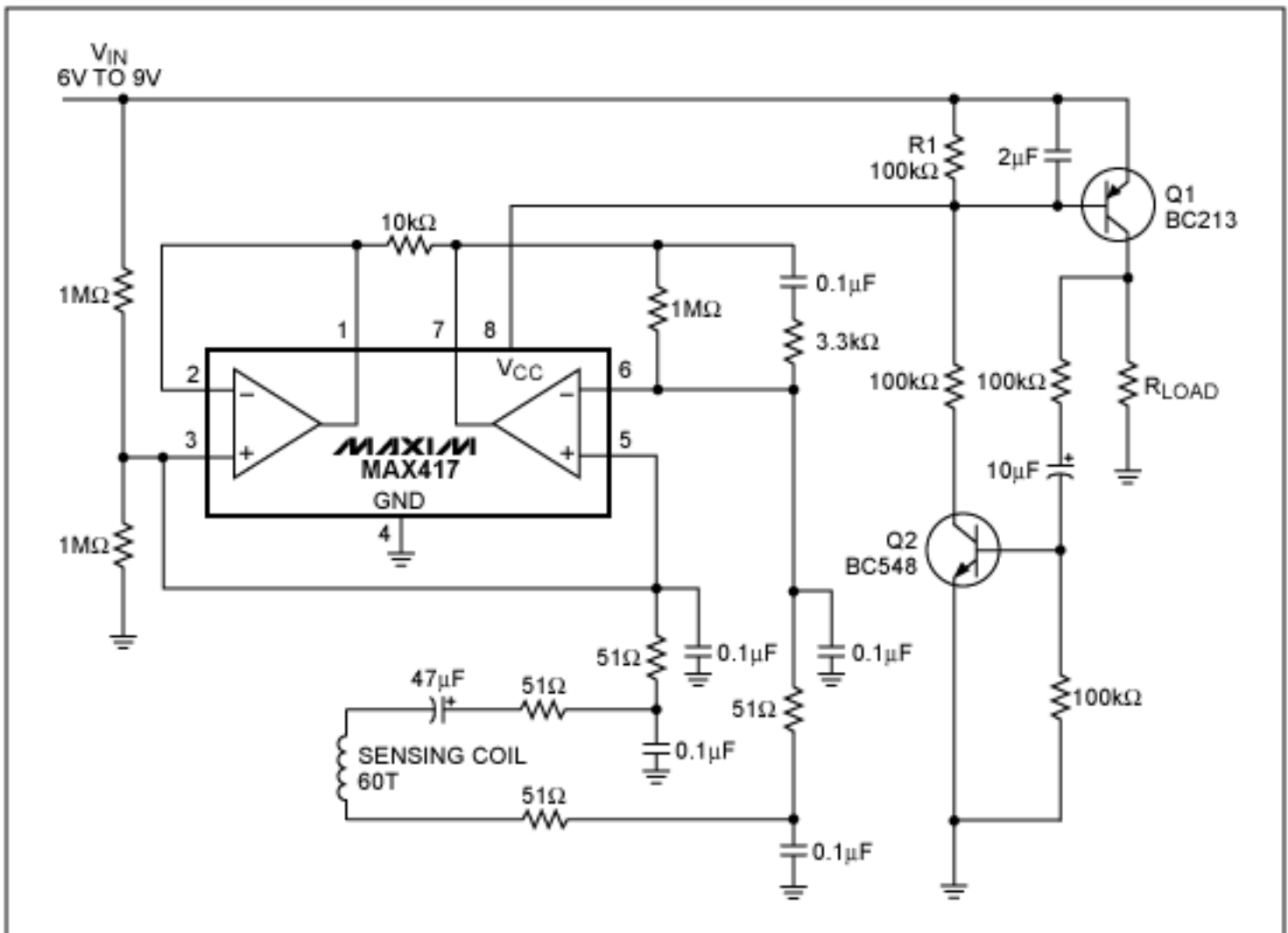


Figure 1. This load switcher enables a small signal to turn on a much larger load current.

Inducing a signal of either polarity in the coil (by passing a magnet near it, for example) causes the dual op amp to draw more current from its V_{CC} terminal. The increase produces a voltage across R1 that exceeds Q1's V_{BE} threshold, activating the complementary monostable multivibrator consisting of Q1, Q2, and associated

components. As a result, Q1 connects battery voltage to the load. For many applications, you can replace the monostable with a simple pnp output stage.

A similar idea appeared in the July 4, 1996 issue of EDN.

Application Note 942: <http://www.maxim-ic.com/an942>

More Information

For technical questions and support: <http://www.maxim-ic.com/support>

For samples: <http://www.maxim-ic.com/samples>

Other questions and comments: <http://www.maxim-ic.com/contact>

Related Parts

MAX417: [QuickView](#) -- [Full \(PDF\) Data Sheet](#) -- [Free Samples](#)

AN942, AN 942, APP942, Appnote942, Appnote 942

Copyright © by Maxim Integrated Products

Additional legal notices: <http://www.maxim-ic.com/legal>