

APPLICATION NOTE 7

Build High-GBW Op-Amp From A Dual Video Amplifier

Abstract: Build a composite amplifier featuring high gain, wide bandwidth, good DC accuracy and low distortion by cascading a dual amplifier and adding phase compensation.

You can build a composite amplifier featuring high gain, wide bandwidth, and good DC accuracy by cascading the sections of a dual video amplifier and adding two appropriate phase-compensation components. In the example shown (**Figure 1**) the op amp drives a 150Ω load and provides a closed-loop gain of 40dB. You can obtain 40dB by cascading two 20dB sections, but that arrangement allows significant output distortion. (The video amplifiers normally operate at low gain while driving 75Ω or 150Ω loads.

The individual video amplifiers are unity-gain stable without external compensation, and have unity-gains bandwidth of 72MHz. They operate on ±5V supplies and consume about 350mW as a pair. Other typical specs include 2mV input offset, 100pA input bias currents, -72dB isolation between amplifiers, and differential phase and gain errors of 0.2° and 0.5%. The dual-amplifier chip comes in an 8-lead DIP.

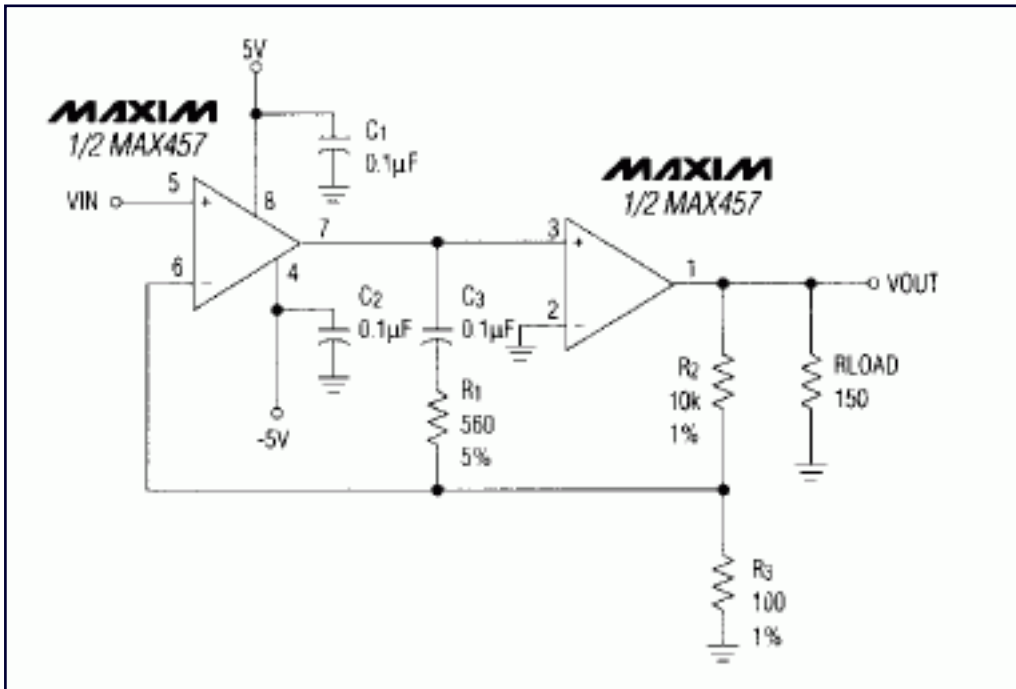


Figure 1. This composite amplifier, based on a dual video-amplifier IC, provides a 40dB gain and 10MHz bandwidth while driving a 150Ω load.

The approach taken in Figure 1 minimizes output distortion. The first amplifier, operating with no (DC) load, provides its maximum voltage gain of about 660V/V. The second amplifier, driving a 150Ω load, has a voltage gain of about 65. Total open-loop gain for the composite amplifiers is thus 660×65, or about 92dB. In the absence of phase-compensation components R₁ and C₃, however, the circuit will oscillate.

With the 150Ω load, output swing is typically ±3.3V and linearity (between -2V and 2V) is about ±0.5%. R₁ and C₃ adjust the -3dB frequency to 10MHz, giving a gain-bandwidth product of 1GHz. The amplifier provides a 2V output swing with only 3% peaking near the 10MHz rolloff frequency. For comparison, a BB3554 or AD3554 operating at 40dB with no phase compensation (for maximum bandwidth) has a -3dB bandwidth of only 7MHz.

**Table 1. Input and output voltages.
(Offset voltage not adjusted)**

V _{IN}	V _{OUT}
+30.000mV	+2.968V
+20.000mV	+1.963V
+10.000mV	+0.960V
0.000mV	-0.046V
-10.000mV	-1.060V
-20.000mV	-2.070V
-30.000mV	-3.059V

The table in Figure 1 gives DC performance for the closed-loop amplifier. Gain resistors R₂ and R₃ measured 99.78 and 9965Ω, giving a theoretical gain of $R_2 + R_3 / R_3 = 1000.870\text{V/V}$ —which is very close to the value of 100.825 measured for range -2V to 2V.

Application Note 7: <http://www.maxim-ic.com/an7>

More Information

For technical questions and support: <http://www.maxim-ic.com/support>

For samples: <http://www.maxim-ic.com/samples>

Other questions and comments: <http://www.maxim-ic.com/contact>

Related Parts

MAX457: [QuickView](#) -- [Full \(PDF\) Data Sheet](#)

AN7, AN 7, APP7, Appnote7, Appnote 7

Copyright © by Maxim Integrated Products

Additional legal notices: <http://www.maxim-ic.com/legal>