

APPLICATION NOTE 4225

Minimizing Shutdown Current in the MAX9877 Audio Subsystem IC

By: Adrian Rolufs

Abstract: The MAX9877 audio subsystem IC was designed with the knowledge that any devices connected to an I²C bus expect both the SDA and SCL lines to idle in a logic-high state. Therefore, this device achieves the minimum shutdown supply current by relying upon the logic-high state at both SDA and SCL. This application note describes three methods for achieving minimum shutdown current in systems where SDA and SCL must be set to a logic-low when the MAX9877 is placed in shutdown.

Introduction

In any typical application, devices connected to an I²C bus expect both the SDA and SCL lines to idle in a logic-high state. The [MAX9877](#) audio subsystem IC was designed with this expectation and, as a result, relies upon logic-high at both SDA and SCL in order to achieve the minimum shutdown supply current. This article describes three methods that can be used to attain minimum shutdown current in systems where SDA and SCL may be set to a logic-low when the MAX9877 is placed in shutdown.

Method 1—Additional Weak Pullup

The first method uses an additional weak voltage divider for each SDA and SCL to set the voltage on the lines when the normal pullup resistors are not active. **Figure 1** shows the schematic for this method.

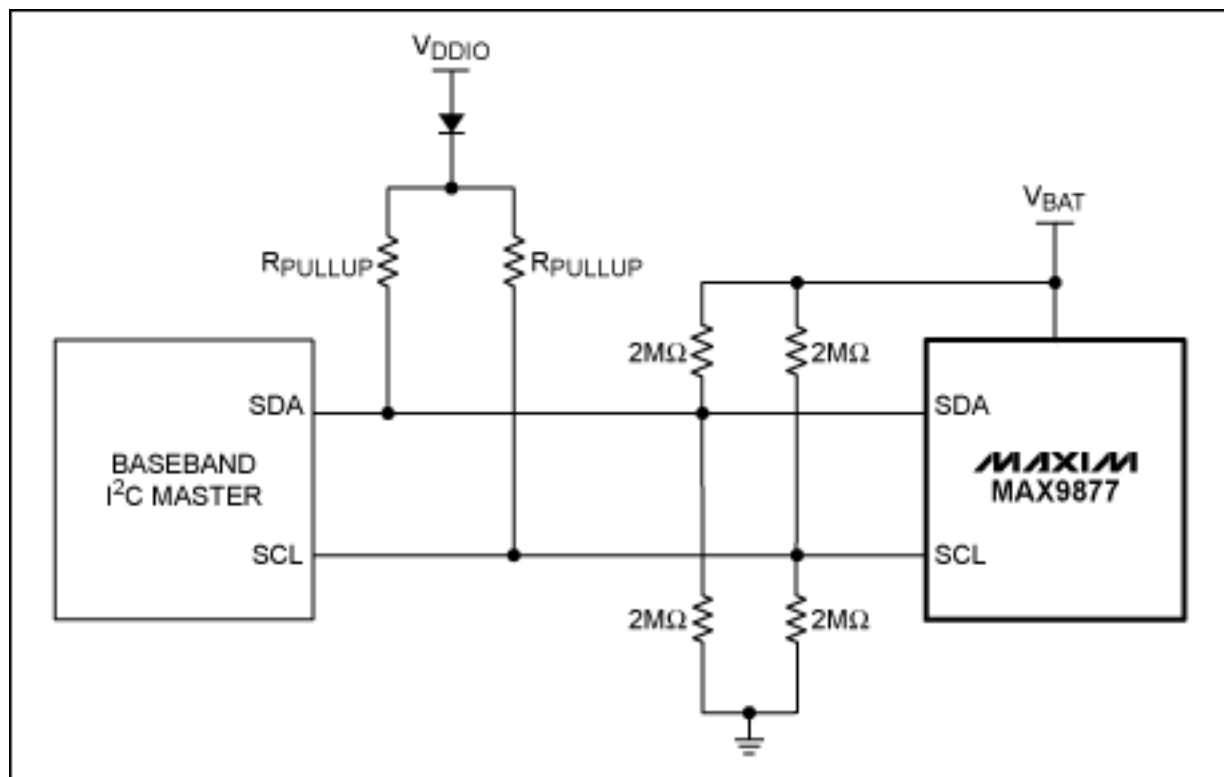


Figure 1. Weak voltage dividers are used to set the voltage on the SDA and SCL lines, while an isolation diode prevents current consumption if the pullup voltage is forced to ground.

The pair of 2M Ω resistors on SDA and SCL divides down the battery voltage so that the voltage of SDA and SCL does not exceed the maximum rating of the I²C master. For a battery voltage that ranges from 4.2V to 3.2V, the voltage on SDA and SCL is set between 2.1V and 1.6V, which is sufficient to exceed the input-high voltage of the MAX9877.

The diode prevents the disabled V_{DDIO} power supply from consuming current if its output is forced to ground. If the power supply has a high-impedance output when disabled, then the diode can be omitted.

This method also assumes that the output of the I²C master and all other devices on the bus are high impedance when in shutdown. One reason that this assumption may not be correct is if the I²C master's power supply has been removed and the output is clamped to the now 0V supply voltage by the integrated ESD protection. This is not typically the case but, if it is, then Method 2 or 3 must be used to allow SDA and SCL to be pulled high.

Method 2—Level Translator

If the other devices on the bus cannot be trusted to be high impedance when the system interface is shut down, a single n-channel enhancement MOSFET can be used to isolate each bus line from the rest of the system. Additional pullup resistors can then be added to set the logic level high on the MAX9877 side of the bus.

Figure 2 shows how to implement this method. V_{DDIO} is again the system's I²C pullup voltage. All four resistors should be selected based on the I²C timing requirements of the system. The n-channel MOSFET serves as a bidirectional level translator, which allows the logic level to be different for the MAX9877 and the baseband without interfering with normal operation. When the V_{DDIO} power supply is disabled, the level translator allows the SDA and SCL pins of the MAX9877 to remain high, thus minimizing shutdown current.

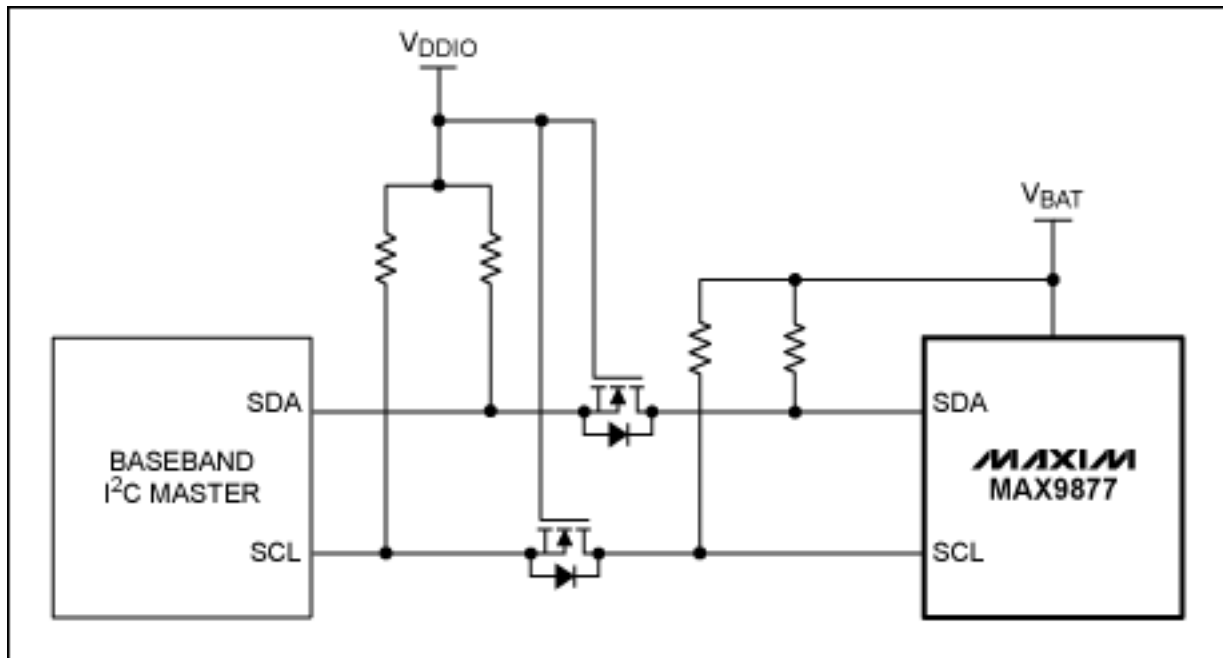


Figure 2. The addition of n-channel MOSFET level translators isolates the system's bus lines.

Method 3—High-Side Power Switch

The final solution to minimizing the shutdown current of the MAX9877 is to place a high-side switch in series with the MAX9877 power supply. This allows the power supply to be completely disconnected from the battery when required and reduces the shutdown current of the MAX9877 to less than 1 μ A.

Figure 3 shows how to connect the high-side switch to the MAX9877. The MAX9877 has two power supply pins (V_{DD} and PV_{DD}) that must be kept within 0.3V of each other at all times. A single power switch is used to keep

the supplies at the same voltage and to minimize component count.

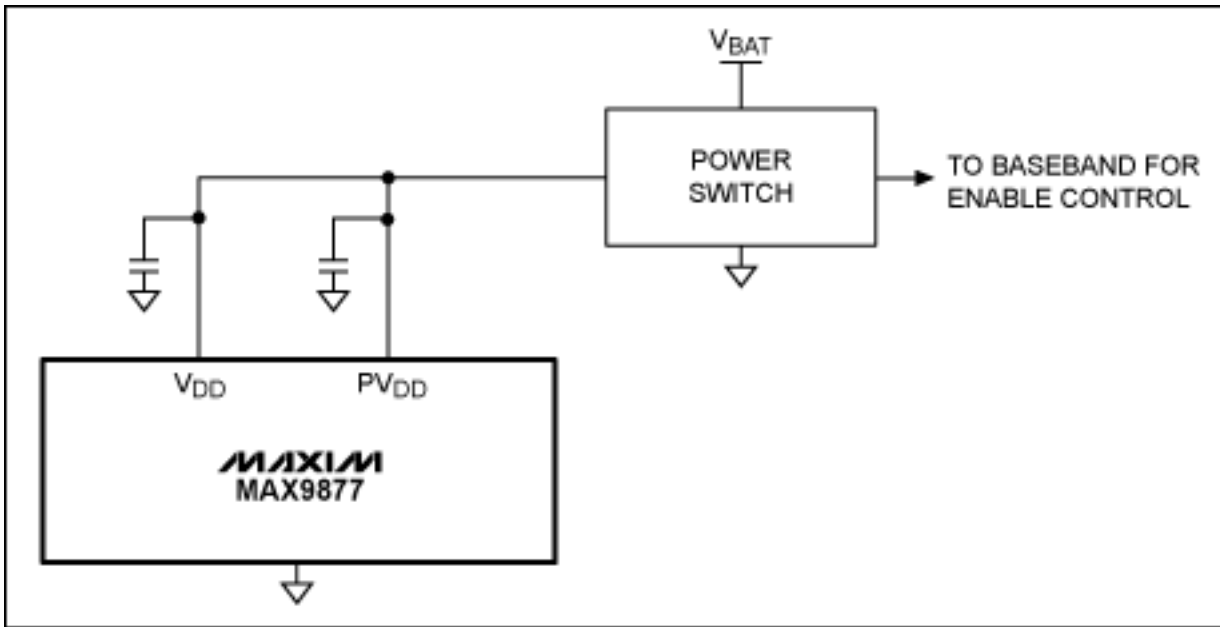


Figure 3. A high-side power switch in series with the MAX9877 power supply completely eliminates all shutdown current.

Application note 4225: www.maxim-ic.com/an4225

More Information

For technical support: www.maxim-ic.com/support

For samples: www.maxim-ic.com/samples

Other questions and comments: www.maxim-ic.com/contact

Automatic Updates

Would you like to be automatically notified when new application notes are published in your areas of interest? [Sign up for EE-Mail™](#).

Related Parts

MAX9877: [QuickView](#) -- [Full \(PDF\) Data Sheet](#)

AN4225, AN 4225, APP4225, Appnote4225, Appnote 4225

Copyright © by Maxim Integrated Products

Additional legal notices: www.maxim-ic.com/legal