



APPLICATION NOTE 4198

New CCI Current Conveyor

By: John Robinson

Abstract: Offering higher bandwidth than its voltage-feedback counterpart, the second-generation current conveyor operational amplifier (CCII) can be used in RF mixers, high-frequency precision rectifiers, and medical applications such as electrical impedance tomography. The conventional operational amplifiers cannot be used in the high-frequency applications due to their limited gain-bandwidth product.

Introduction

The current conveyor has been around since the original design, or CCI (which can be regarded as an ideal transistor), was initially proposed by Smith and Sedra in 1968^{1,2}. CCI was then replaced by a more versatile second-generation device in 1970, the CCII³. Current conveyor designs have mainly been BJT due to their high transconductance values compared to their CMOS counterparts. They are used as current-feedback operational amplifiers like the [MAX477](#) high-speed amplifier and the [MAX4112](#) low-power amplifier, which both feature current feedback rather than the conventional voltage feedback used by standard operational amplifiers. This means that the current feedback operational amplifier is not restricted by the conventional gain bandwidths of a standard operational amplifier, and can offer a much higher bandwidth solution than its voltage-feedback counterpart.

Current conveyors are used in high-frequency applications where the conventional operational amplifiers cannot be used, because the conventional designs are limited by their gain-bandwidth product. In theory, the current conveyor is only limited by the f_t of the transistors used in its design. Some applications where current conveyors are used today include RF mixers, high-frequency precision rectifiers, and medical applications such as Electrical Impedance Tomography (EIT).

A Bipolar Conveyor

The diagram in **Figure 1** below shows a current conveyor implemented using bipolar devices.

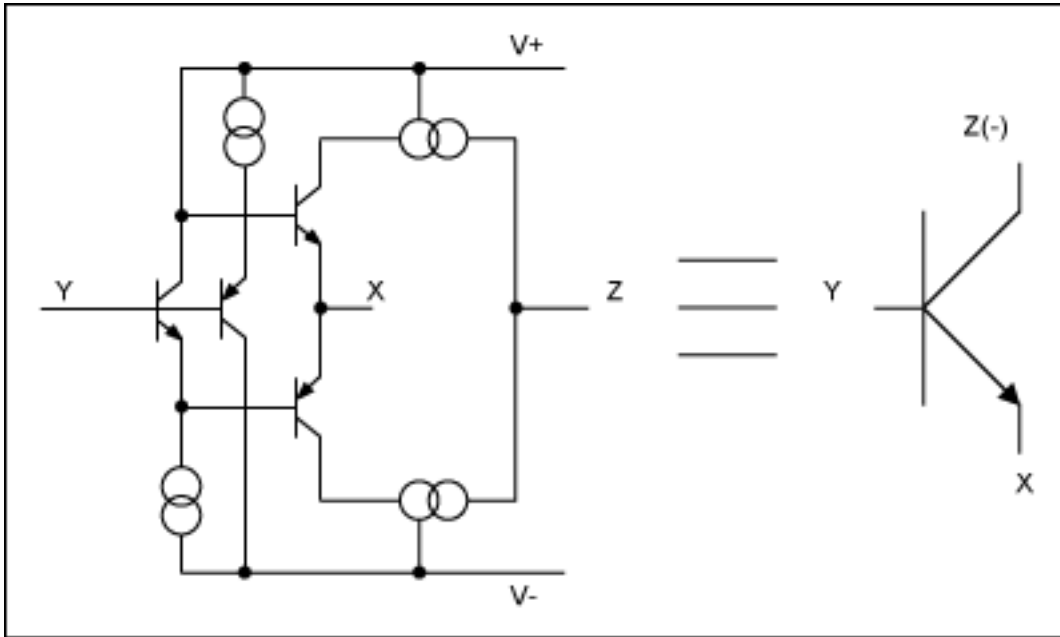


Figure 1. A bipolar CCII.

From Figure 1 it can be seen that the CCII conveyor can be modelled as an ideal transistor:

Y being the base/gate
 X being the emitter/source
 Z being the collector/drain

This type of circuit works well as a circuit with BJTs, as the transconductance and Early voltages of BJTs are much greater than that of CMOS devices. Therefore, current conveyors work well as source followers. Gain X/Y is close to 1; Z has a natural high-output impedance which cannot be mimicked by their CMOS counterparts.

The CMOS Source Follower

As previously explained, the major problem with a CMOS follower is the low g_m and poor Early voltage ($1/\lambda$). This equates to poor gain, because the gain for a voltage follower heavily relies on these two parameters to be large. This can be observed in the equation below:

$$\text{Gain} = \frac{1}{1 + \frac{(g_L + g_{ds})}{g_m}}$$

Where g_L is the load conductance, g_{ds} is the drain source conductance and g_m is the transconductance of the CMOS device.

A typical simulated gain with a TSMC 0.18 μm with a load of 1k Ω gave a gain of 0.7. Compared to the ideal gain of 1, this represents a 30% loss in output gain.

Current Conveyor Source Follower

One can use an unbuffered amplifier (**Figure 2a**) to mimic a source follower with a gain of one. Then this modification can be added to the basic design in Figure 1 to make a CCII current conveyor.

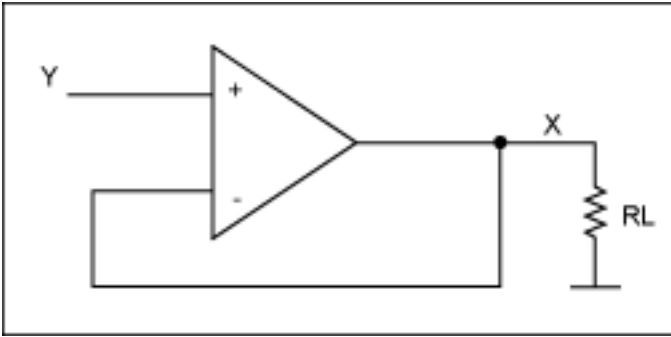


Figure 2a. A simple source follower.

Figure 2a can be implemented as shown below in **Figure 2b**.

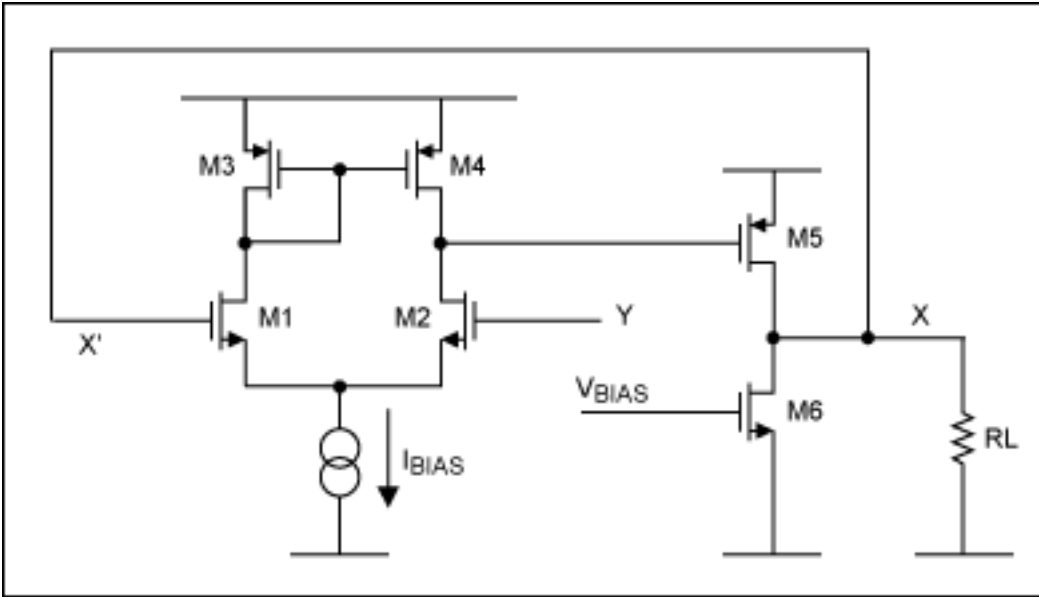


Figure 2b. The CCII unbuffered source follower and implementation.

From Figure 2b it can be seen that output X is fed back to one of the long tail pairs of inputs (X'). The other input to the long tail pair is Y, as input Y changes the current through M1. M2 differs as M3, and M4 is a current mirror.

There is a current difference between M2 and M4. This imbalance is addressed by pulling current from, or to, the gate/source capacitance C_{gs} of device M5. Until the output X' matches that of Y, the bandwidth limit is defined as the rate at which this transistor can be discharged and charged. Thus, the bandwidth limit can be defined as:

$$\text{Bandwidth}(\omega) = \frac{G_m(\text{longTailPair})}{C_{gs}(M5)}$$

Current Conveyor (CCII+) Using an Unbuffered Amplifier

From Figure 2, the first part of the current conveyor (CCII+) can be realized. To build the rest of the current conveyor (CCII+), the current from output X' simply has to be mirrored. To give Z's output, see the example in **Figure 3**.

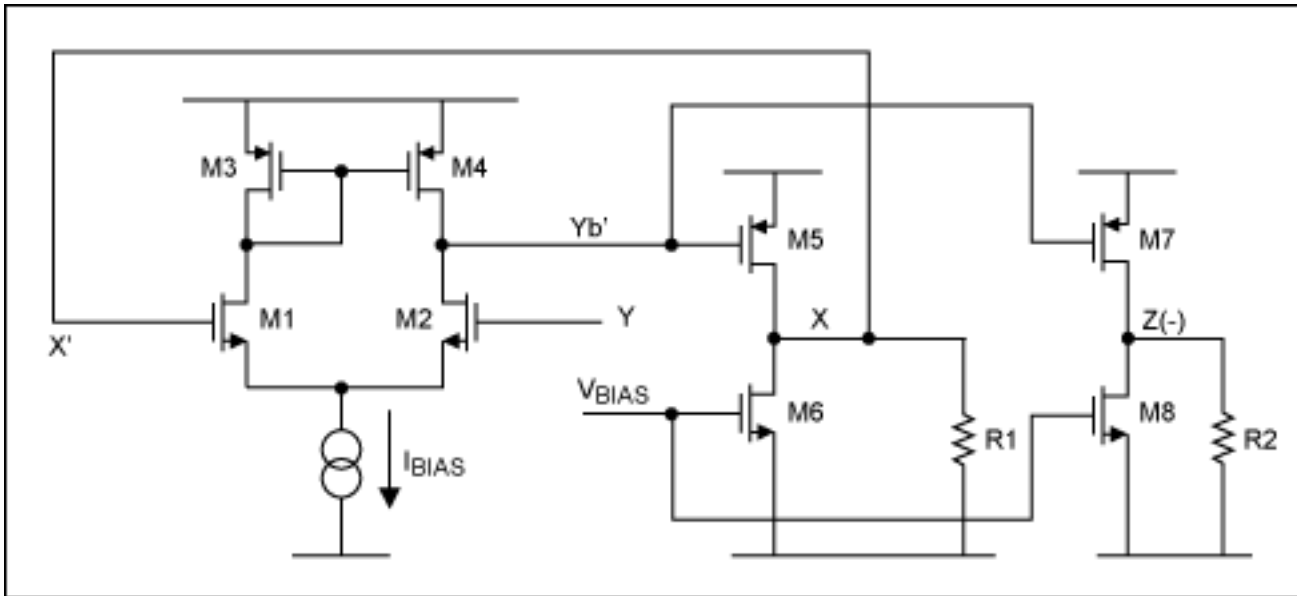


Figure 3. The current conveyor (CCII+) using an unbuffered amplifier.

The current from M5/M6 is simply mirrored by M7/M8, giving the output Z(-) of the CCII+.

The output impedance of Z can be improved by adding in a cascode to M7/M8 if necessary. One must be aware that to mimic the current successfully, the output impedance of X must match that of Z, i.e., the same transistor types and confirmation must be used on M5/M6 as on M7/M8.

The gain of the CCII is simply:

$$\text{Gain} = \frac{R2}{R1}$$

Converting from a CCII+ to a CCII-

Taking the bias point Yb' (Figure 3), simply add the extra connections as shown in **Figure 4**.

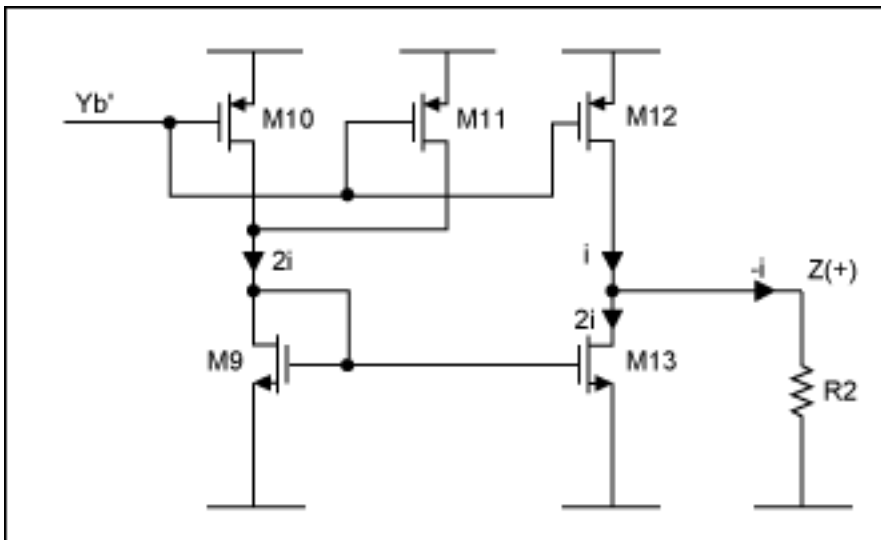


Figure 4. The current conveyor configured as a CCII-.

From Figure 4, if all transistor dimensions are the same and if Yb' (the bias point from Figure 3) is taken, then a current $2i$ is generated from M10 and M11. This is mirrored by M9 to give a current of $2i$ through M13. M12 provides a current of i and gives a current of $-i$ through Z(+), thus giving a true CCII- output. There is a problem with this approach: the Z(+) now has an $-i$ DC term instead of a $+i$ term. Consequently, a $2i$ DC term needs to be added to the output of Z(+) to compensate for $-i$. **Figure 5** below shows the addition.

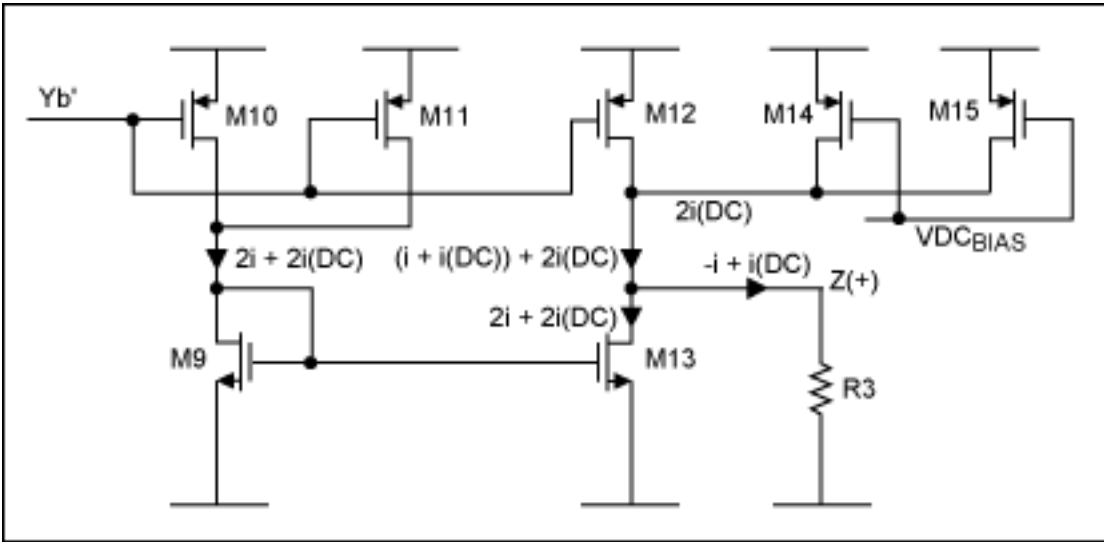


Figure 5. The CCII- output with added DC bias.

From Figure 5, transistors M14 and M15 provide the appropriate current to compensate for the DC current taken by M13. (Note that M14 and M15 must match M12). Make the current through R3 equal to $i(\text{DC}) - i'$. Remember that R3 and R2 must match; any mismatch in their values will mean that their output DC values will differ.

The V_{BIAS} Circuit

To create the necessary and appropriate voltage, V_{DCBIAS} , that will maintain the DC currents in M14 and M15, then V_{DCBIAS} (Figure 5) must have the same DC value as Node Yb' (Figures 4 and 5). To do this, simply mimic the front-end stage and take the DC value of the input signal as the input bias voltage into this stage (V_{INDC}), as shown in **Figure 6** below.

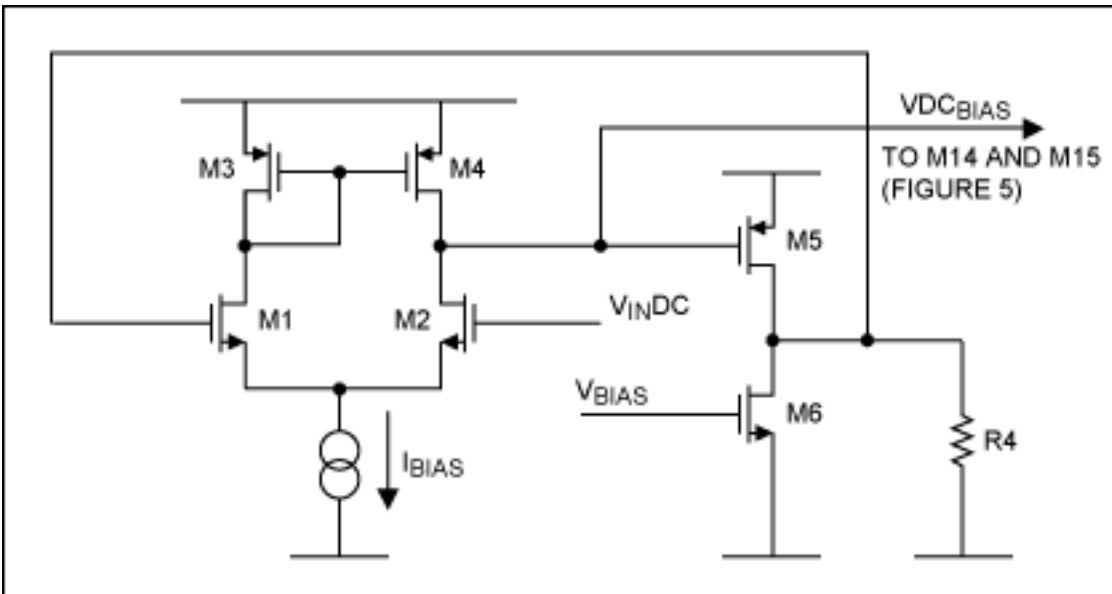


Figure 6. V_{BIAS} circuit for the DC compensation circuit (Figure 5).

The only problem with this design is that another resistor (R4) is needed, and R4 must again match R2 and R3.

Simulation Results

Using the CCII+ as in Figure 3 and using a TSMC 0.18 μm process with $R1 = 1\text{k}\Omega$ and $R2 = 1\text{k}\Omega$, results in a gain

of 1. The 3dB bandwidth of the device was 2.5GHz and had a gain of 0.972 with a power-supply reject ratio (PSRR) of 41dB.

These results were improved by using a cascode device to replace M5/M6 and M7/M8, which gave a bandwidth of 900MHz and an improved gain of 0.993. The PSRR was also improved at 51dB.

References

¹K.C. Smith and A. Sedra, 'The Current-Conveyor — A New Circuit Building Block,' **IEEE Proc**, Vol. 56, 1968, pp. 1368–1369.

²C. Toumazou, John Lidgey & Alison Payne, 'Practical Integrated Current-Conveyors, Current Mode Circuits Techniques in Analog High Frequency Design,' July 1996, Chapter 5.2, pp. 69–80.

³K.C. Smith and A. Sedra, 'A Second Generation Current-Conveyor and its Applications,' **IEEE Trans**, CT-17, 1970, pp. 132–134.

This application note is based on an article published in *Chip Design Magazine*, August/September 2007.

Application Note 4198: www.maxim-ic.com/an4198

More Information

For technical support: www.maxim-ic.com/support

For samples: www.maxim-ic.com/samples

Other questions and comments: www.maxim-ic.com/contact

Automatic Updates

Would you like to be automatically notified when new application notes are published in your areas of interest?

[Sign up for EE-Mail.](#)

Related Parts

MAX4112: [QuickView](#) -- [Full \(PDF\) Data Sheet](#)

MAX477: [QuickView](#) -- [Full \(PDF\) Data Sheet](#)

AN4198, AN 4198, APP4198, Appnote4198, Appnote 4198

Copyright © by Maxim Integrated Products

Additional legal notices: www.maxim-ic.com/legal