

APPLICATION NOTE 4013

MAX2205—Detecting High Peak-to-Average Ratio Signals

Abstract: This application note shows measurements taken using the MAX2205 RF power detector for various peak-to-average ratio signals. It also mathematically explores the theory of operation of the MAX2205.

The MAX2205 power detector's input stage is essentially two transistors arranged as shown in **Figure 1**. The output voltage is proportional to the input signal's voltage amplitude.

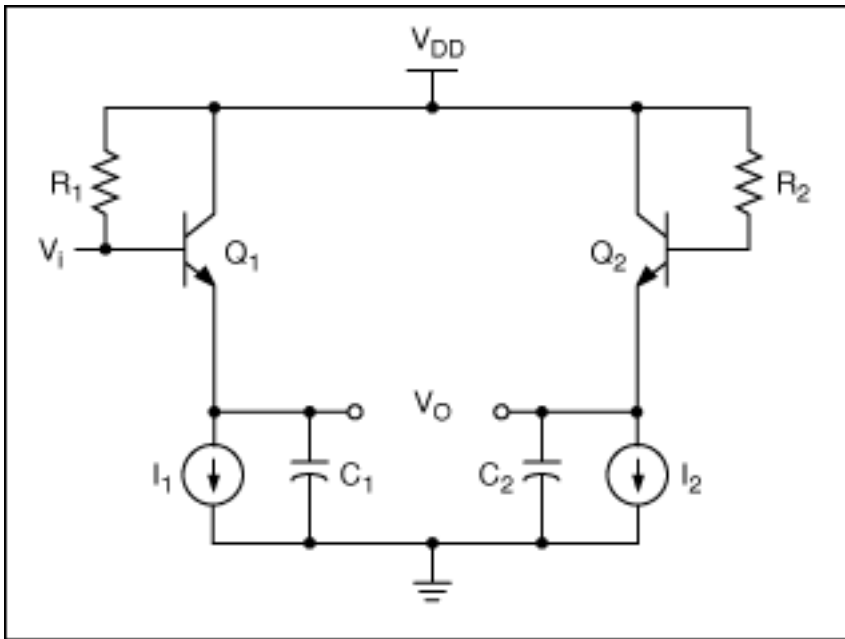


Figure 1. Diagram of the MAX2205 input stage.

For complex modulations where peak-to-average ratio (PAR) varies depending on the modulation type, the MAX2205's output does not imply the exact average power. An in-depth mathematical analysis can be found in the *Appendix* of this application note but, basically, some correction must be applied in these circumstances. What follows is the result of an empirical study of the MAX2205 power detector's behavior with different PAR signals.

Measurements

Measurements were made using the MAX2205EVkit (see **Figure 2**).

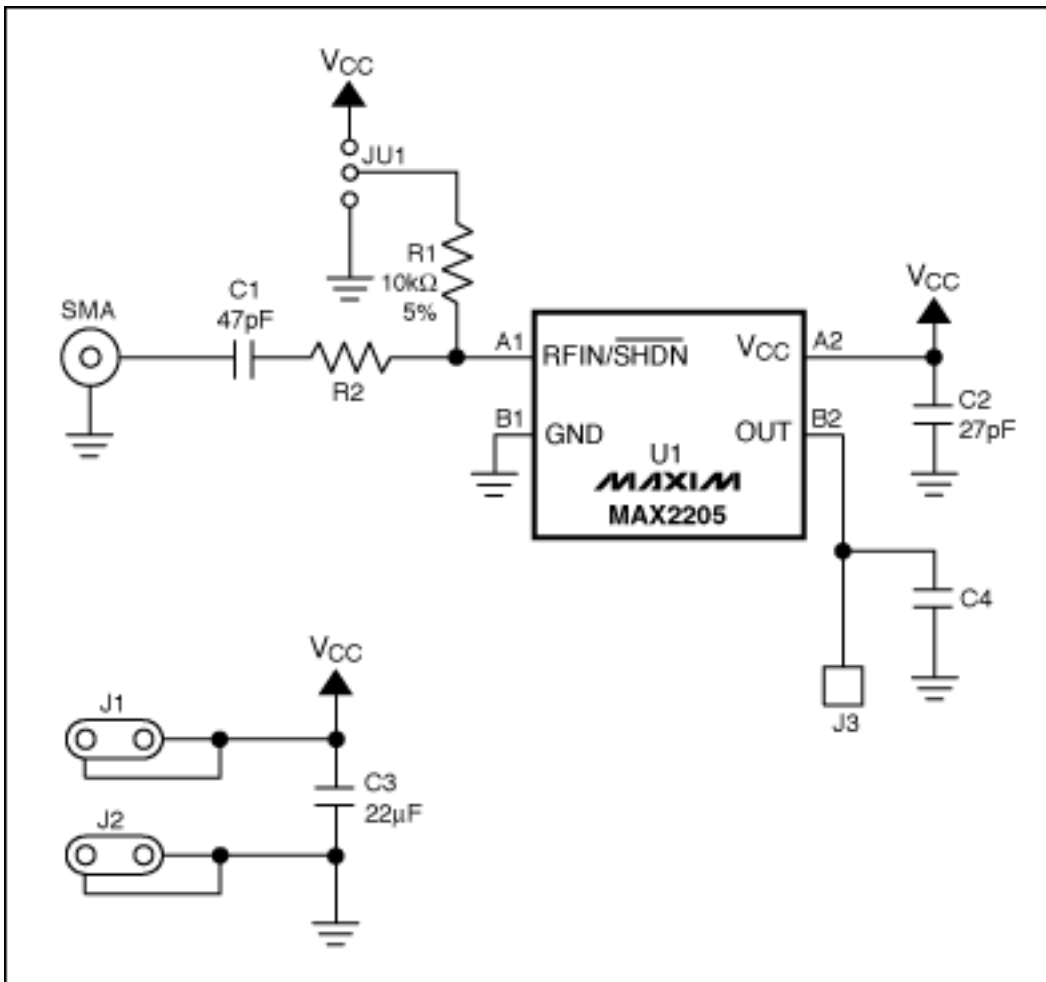


Figure 2. Schematic of MAX2205EVKit.

- Signal Frequencies
 - 1.9GHz
 - 800MHz
 - 450MHz
- Modulation Types Measured
 - QPSK Modulated, 3.5dB PAR
 - QPSK Modulated, 6.5dB PAR
 - QAM Modulated, 6dB PAR

Measurement Results

The plots in **Figures 3** through **5** use 3.5dB PAR as a baseline or 'zero' error. R2 is adjusted to suit the frequency band and to result in a desired output-voltage range.

Figure 3. Error measurement for a signal frequency (f_{IN}) of 1.9GHz, where:

$V_{CC} = 2.8VDC$

$R2 = 150\Omega$

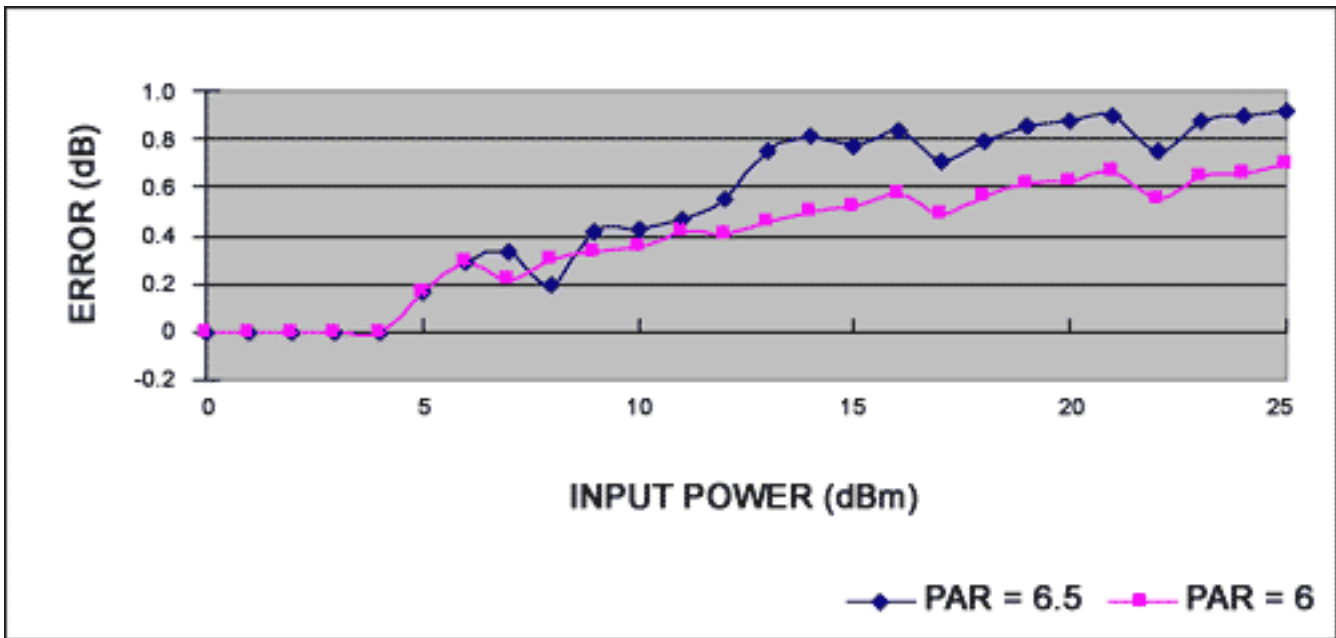


Figure 3a. Error relative to signal at +25°C.

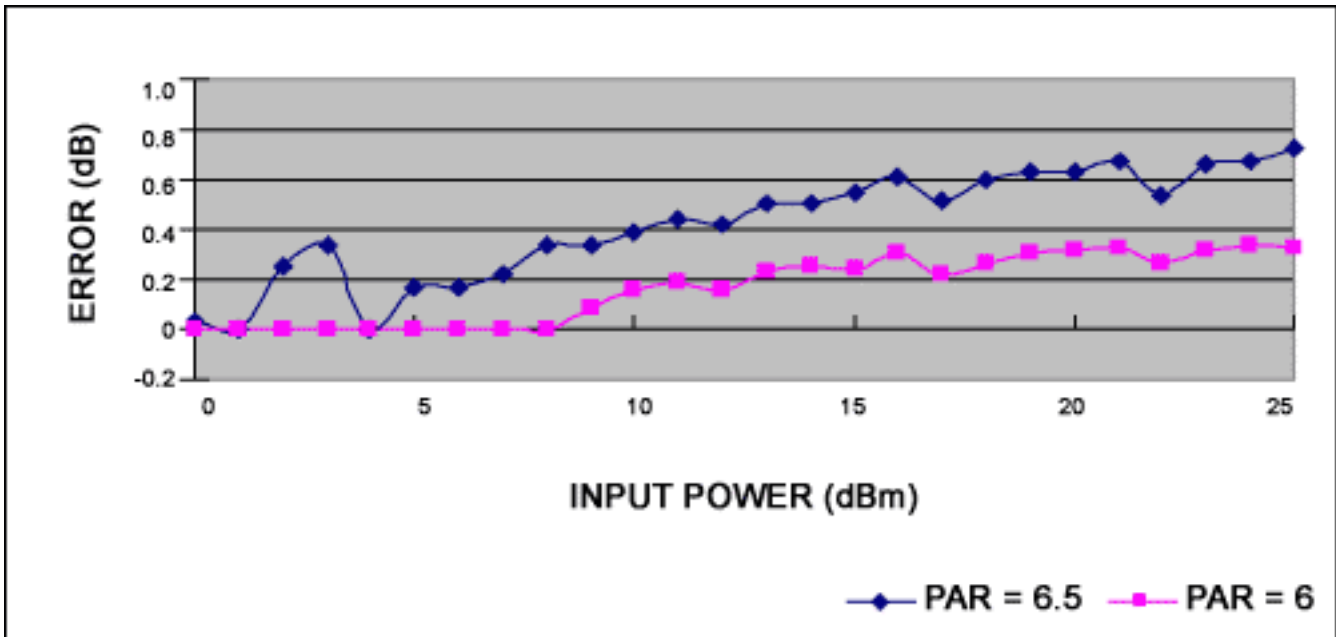


Figure 3b. Error relative to signal at -40°C.

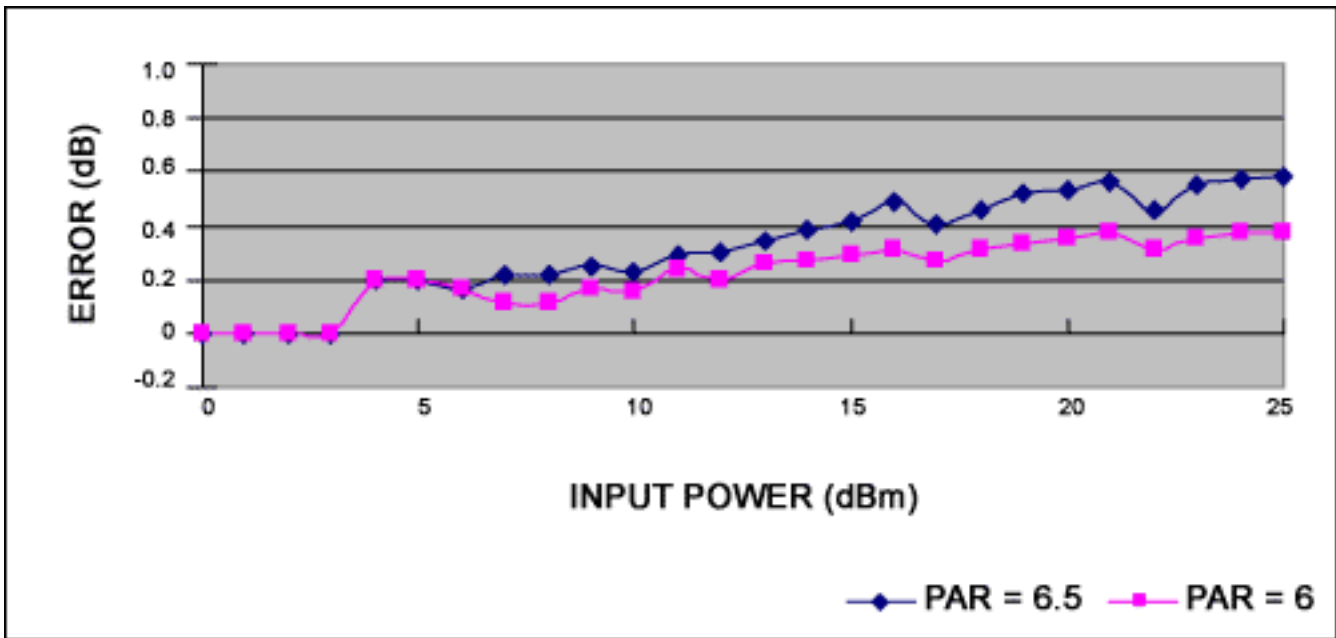


Figure 3c. Error relative to signal at +85°C.

Figure 4. Error Measurement for an f_{IN} of 800MHz, where:

$V_{CC} = 2.8VDC$

$R2 = 150\Omega$

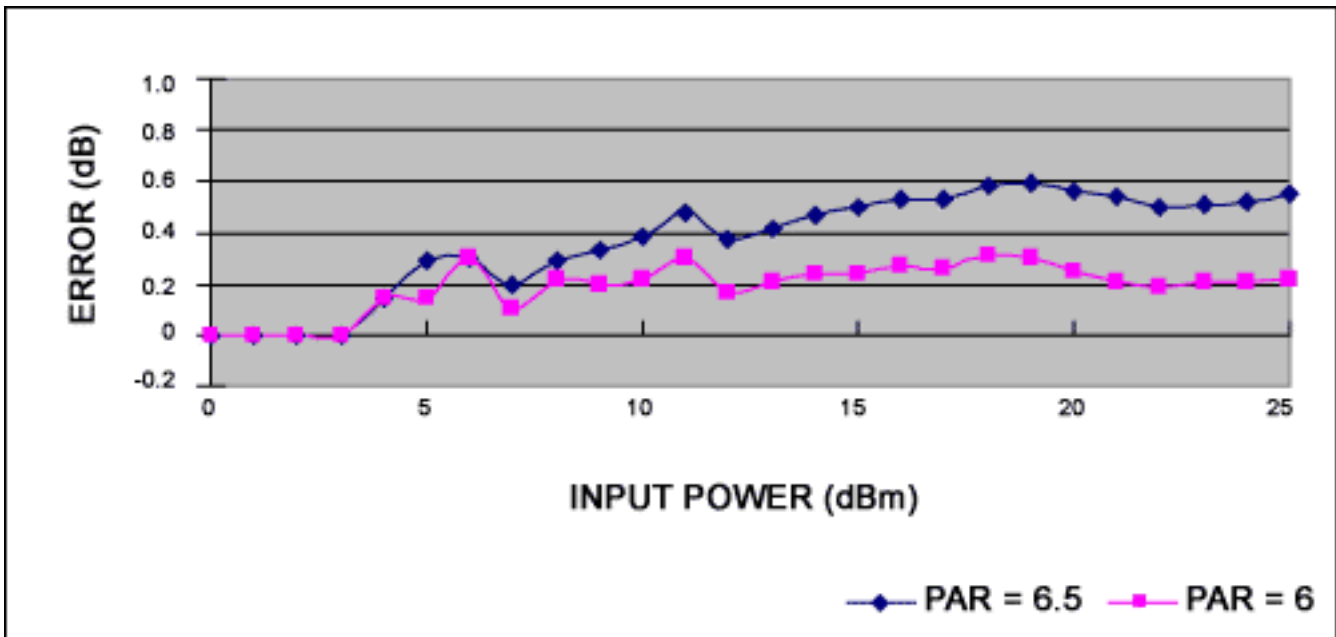


Figure 4a. Error relative to signal at +25°C.

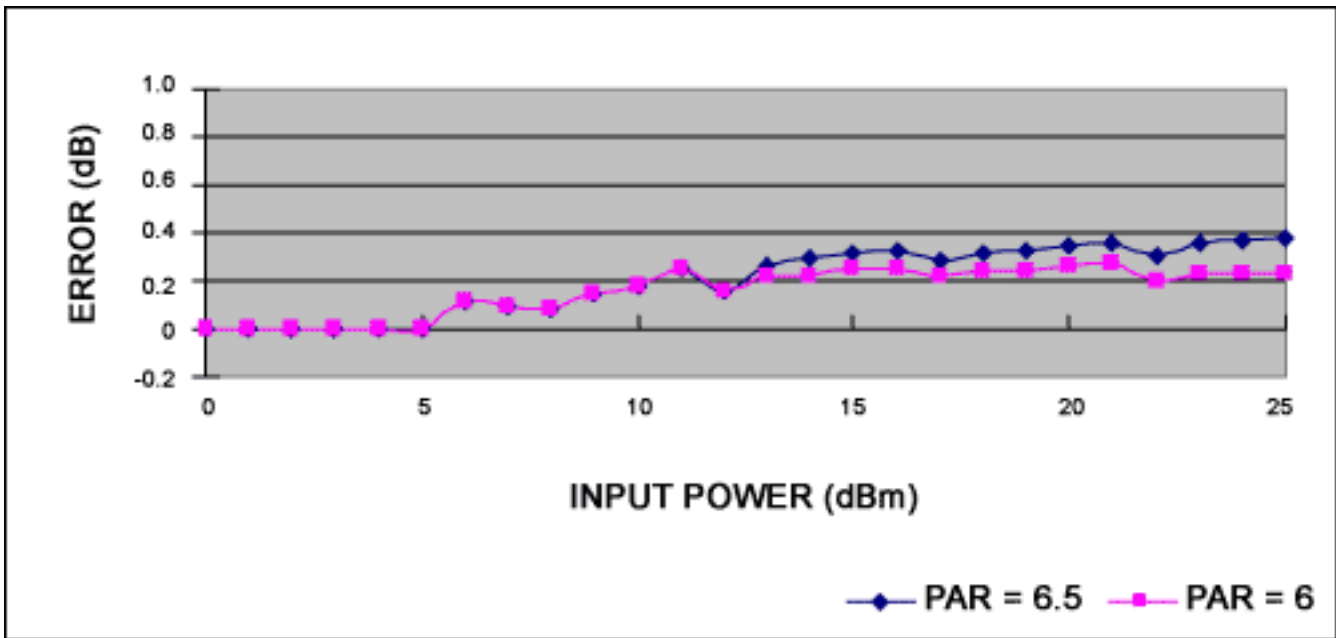


Figure 4b. Error relative to signal at -40°C.

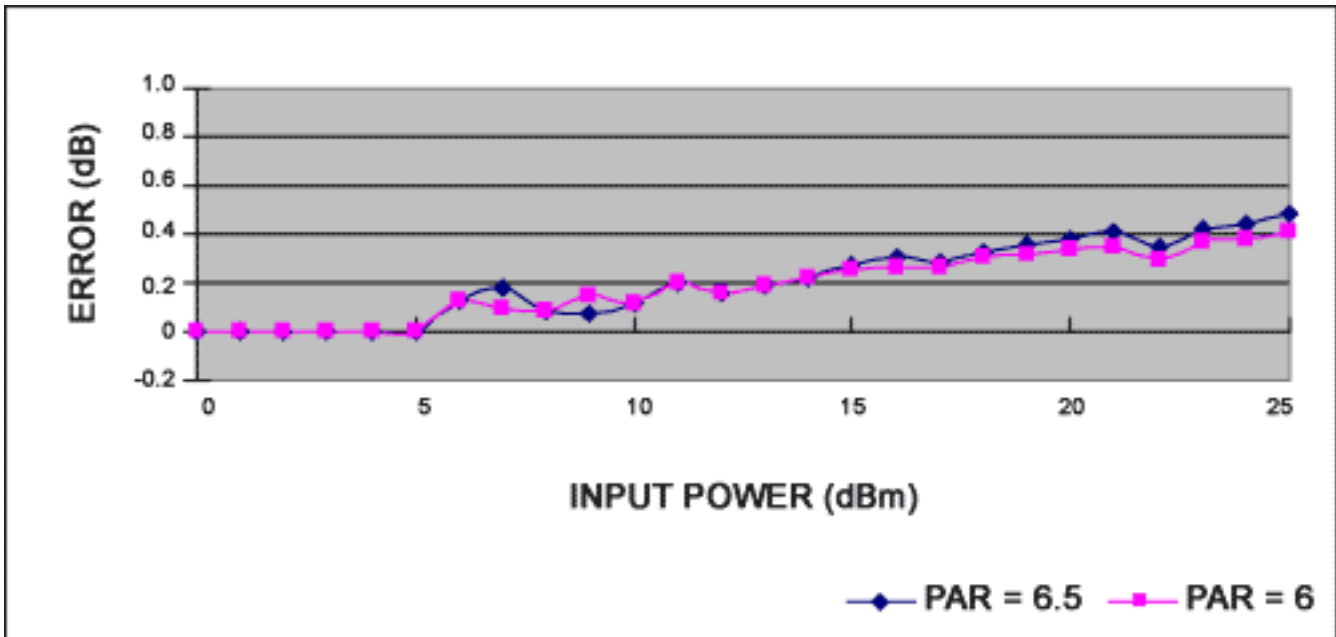


Figure 4c. Error relative to signal at +85°C.

Figure 5. Error measurement for an f_{IN} of 450MHz, where:

$V_{CC} = 2.8VDC$

$R2 = 330\Omega$

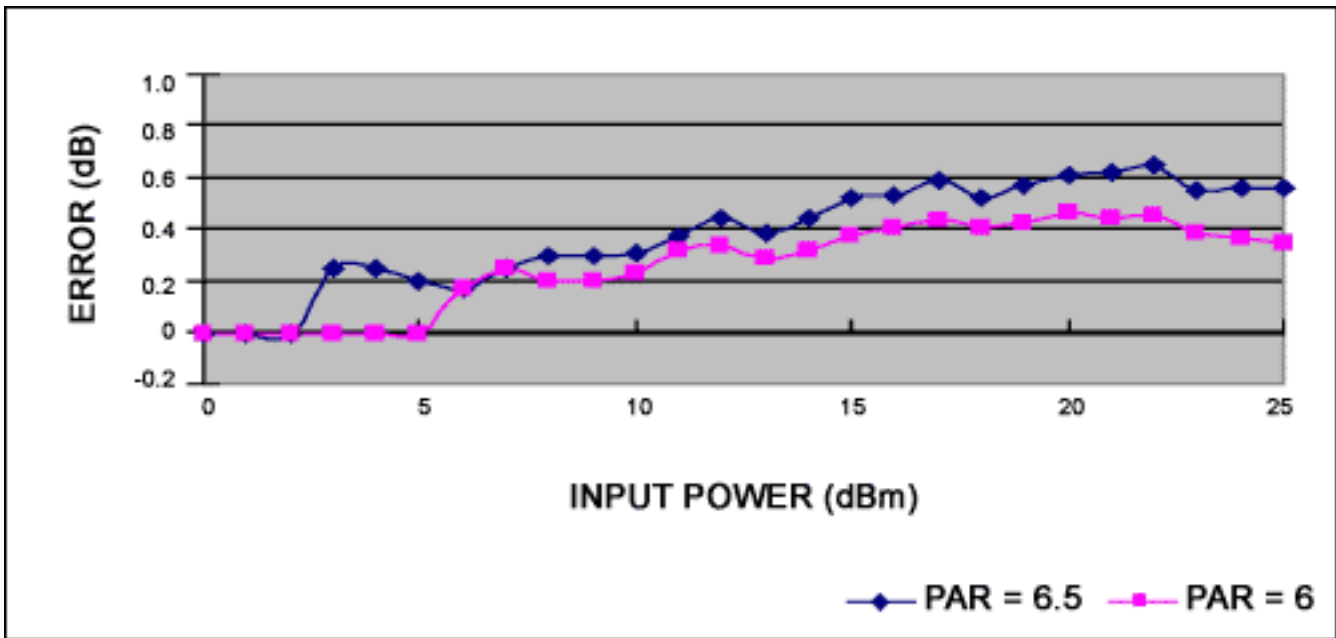


Figure 5a. Error relative to signal at +25°C.

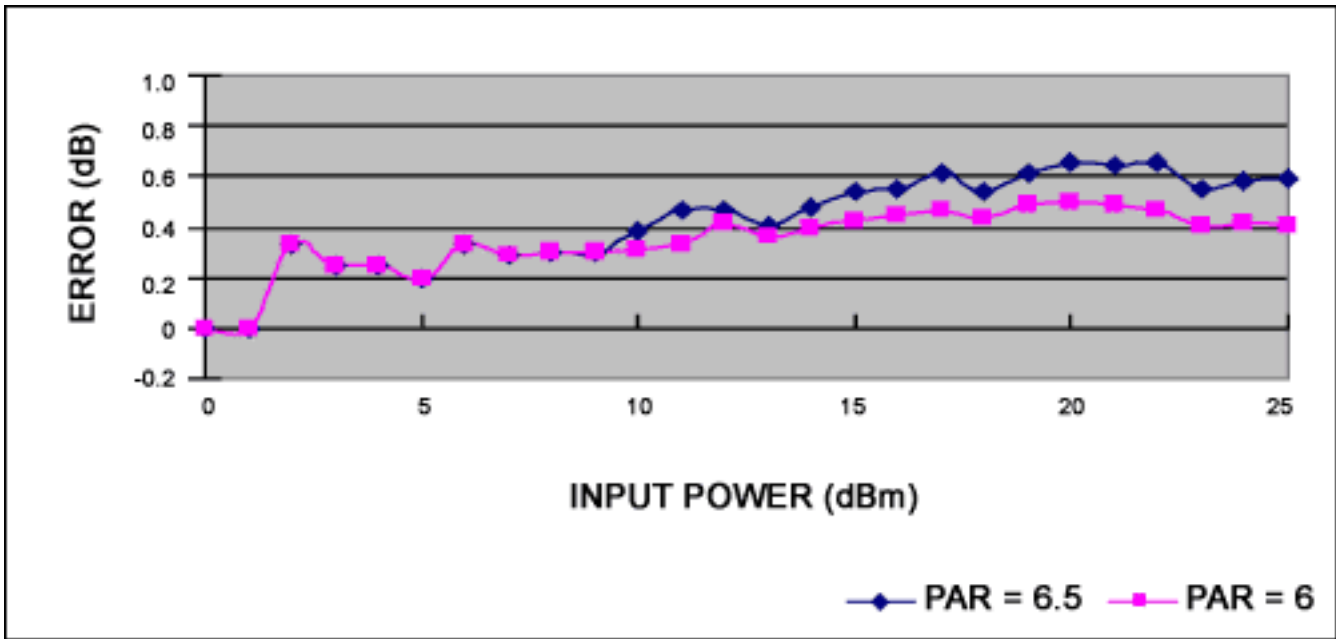


Figure 5b. Error relative to signal at -40°C.

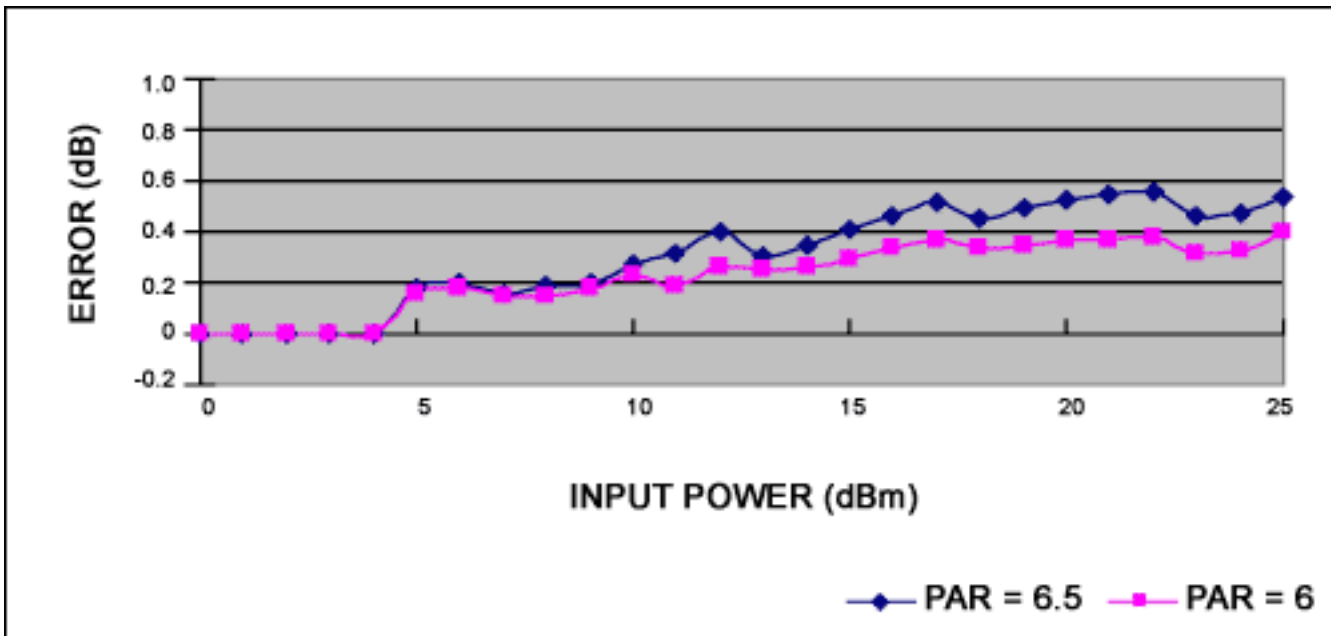


Figure 5c. Error relative to signal at +85°C.

Conclusions

1. The MAX2205 responds to the input voltage, not the square of the input voltage. When the PAR changes, the output voltage will change.
2. For higher PAR values, the resultant error is greater. At room temperature, the error for a 6.5dB PAR signal is 0.9dB at 1.9GHz, 0.55dB at 800MHz, and 0.56dB at 450MHz. Using lower coupled power (i.e., lower incident power to the detector) reduces the error, but also compresses the power detector's dynamic range. For some cases, this error is deemed acceptable and a single lookup table can be used for crest factors from 3.5dB to 6.5dB. The *Appendix* shows an analysis explaining why the error is reduced at a lower input power.
3. Errors are not significantly temperature dependant.
4. Multiband applications may require more than one lookup table. However, the output-voltage curves are similar over frequency, and a correction factor may be devised to allow use of only one lookup table.

Appendix—Detailed Mathematical Analysis of a Power Detector Using Diode I/V Characteristics and a Typical Circuit

For this analysis, diode I/V characteristics are:

$$i = I_S \left(e^{\frac{q \times V}{K \times T}} - 1 \right) = I_S \left(e^{\frac{V}{V_T}} - 1 \right) \quad (\text{Eq. 1})$$

We will perform the I/V analysis for large- and small-signal input conditions as follows.

The **Figure 6** power-detector circuit has symmetric transistors Q_1 , Q_2 ; I_1 , I_2 ; and R_1 , R_2 . Bipolar transistor Q_1 rectifies the input voltage V_I . Transistor Q_2 offers a DC offset voltage to balance the V_O to zero when the AC input signal V_{AC} is zero. C_1 is a hold capacitor whose value can be set by the allowable voltage drop requirement of V_O . The DC bias of Q_1 and Q_2 should be equal so as to cancel any temperature drift.

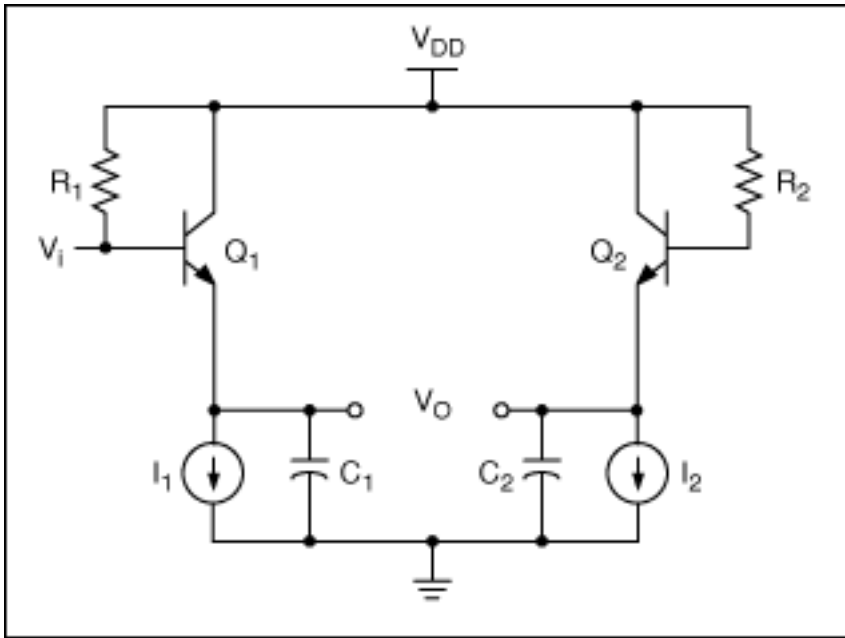


Figure 6. Typical power-detector circuit.

The emitter current of Q_1 is:

$$I_E = I_S \times e^{\frac{V_Q - V_{C1}}{V_T}} \times e^{\frac{V_{AC} \times \cos(\omega \times t)}{V_T}} \quad (\text{Eq. 2})$$

where V_Q is the bias voltage at the base of Q_1 , V_{C1} is the voltage at C_1 , and signal $V_i = V_{AC} \times \cos(\omega t)$ is applied to Q_1 .

Compared to equation 1, an approximation is made based on $V_i = V_Q + V_{AC} \times \cos(\omega \times t) \gg V_T$:

$$I_E = I_S \times e^{\frac{V_Q - V_{C1}}{V_T}} \times (I_0(b) + 2I_1(b) \times \cos(\omega \times t) + \dots) \quad (\text{Eq. 3})$$

where:

V_{AC} = peak amplitude of AC input signal

V_Q = DC voltage difference of base and emitter

$b = V_{AC}/V_T$

$I_n(b)$ = modified Bessel function of order n

The DC component of I_E is:

$$I_{E_DC} = I_S \times e^{\frac{V_Q - V_{C1}}{V_T}} \times I_0(b) = I_S \times e^{\frac{V_Q - V_{C1}}{V_T}} \times \sum_{K=0}^{\infty} \frac{\left(\frac{V_{AC}}{2V_T}\right)^{2K}}{K! \times K!} \quad (\text{Eq. 4})$$

For conditions where $V_{AC} \gg V_T$, $I_0(b)$ can be approximated as:

$$I_0(b) \approx \frac{e^b}{\sqrt{2\pi b}} \quad (\text{Eq. 5})$$

Therefore,

$$I_{E_DC} = I_S \times e^{\frac{V_Q - V_{C1}}{V_T}} \times \frac{e^b}{\sqrt{2\pi b}} \quad (\text{Eq. 6})$$

Because $I = I_1$ constant-current regulation is in series with the emitter of a bipolar transistor, I_{E_DC} should be equal to I_1 . Therefore,

$$I_1 = I_{E_DC} = I_S \times e^{\frac{V_Q - V_{C1}}{V_T}} \times \frac{e^b}{\sqrt{2\pi b}} \quad (\text{Eq. 7})$$

At the same time, considering the bipolar transistor Q_2 , which is identical with Q_1 :

$$I_2 = I_S \times e^{\frac{V_Q - V_{C2}}{V_T}} \quad (\text{Eq. 8})$$

where V_{C2} is the average DC at C_2 (emitter of Q_2).

For the symmetric circuit design, $I_1 = I_2$. Therefore,

$$I_S \times e^{\frac{V_Q - V_{C1}}{V_T}} \times \frac{e^b}{\sqrt{2\pi b}} = I_S \times e^{\frac{V_Q - V_{C2}}{V_T}} \quad (\text{Eq. 9})$$

From equation 9, we can derive:

$$V_{C1} - V_{C2} = V_T (b + \ln(\sqrt{2\pi b})) \quad (\text{Eq.10})$$

We know that $V_O = V_{C1} - V_{C2}$ and $b = V_{AC} / V_T$. Therefore,

$$V_O = V_{AC} + V_T \times \ln\left(\sqrt{\frac{2\pi V_{AC}}{V_T}}\right) \quad (\text{Eq.11})$$

This is the approximate relationship between the input-signal voltage and output voltage for the case where the input signal is larger.

Equation 11 shows us that:

1. V_O is approximately linear in response to V_{AC} , because V_{AC} is included in the second term of equation 11 under a root and logarithm. This is why the output voltage varies with PAR for large input signals.
2. The temperature dependency is small for $V_{AC} \gg V_T$.

For conditions where the input signal is small, the $I_0(b)$ in equation 4 can be approximated as:

$$I_0(b) \cong 1 + \frac{b^2}{4} \quad (\text{Eq.12})$$

Similar to equation 9, we know that:

$$I_S \times e^{\frac{V_Q - V_{C1}}{V_T}} \times \left(1 + \frac{b^2}{4}\right) = I_S \times e^{\frac{V_Q - V_{C1}}{V_T}} \quad (\text{Eq.13})$$

Therefore,

$$V_O = V_{C1} - V_{C2} = V_T \times \ln\left(1 + \frac{b^2}{4}\right) \quad (\text{Eq.14})$$

Using $\ln(1 + x) \approx x$ when x is smaller gives:

$$V_O = V_T \times \frac{b^2}{4} = V_T \times \frac{V_{AC}^2}{4V_T^2} = \frac{V_{AC}^2}{4V_T} \quad (\text{Eq.15})$$

Equation 15 implies that:

1. The output voltage is proportional to the square of RF input-signal voltage amplitude. The square of the voltage's amplitude is proportional to power; therefore, in the square-law region, the power detector's output voltage is proportional to the input signal's power.
2. The output voltage is inversely proportional to temperature.

Application Note 4013: www.maxim-ic.com/an4013

More Information

For technical questions and support: www.maxim-ic.com/support

For samples: www.maxim-ic.com/samples

Other questions and comments: www.maxim-ic.com/contact

Keep Me Informed

Preview new application notes in your areas of interest as soon as they are published. Subscribe to [EE-Mail - Application Notes](#) for weekly updates.

Related Parts

MAX2205: [QuickView](#) -- [Full \(PDF\) Data Sheet](#) -- [Free Samples](#)

AN4013, AN 4013, APP4013, Appnote4013, Appnote 4013

Copyright © by Maxim Integrated Products

Additional legal notices: www.maxim-ic.com/legal