



APPLICATION NOTE 3751

How to Program a Device Using the File Tab in the DS185XEVKIT

Abstract: By using the DS185x Evaluation Kit (DS185XEVKIT) and its associated software, you can program the DS185x family of devices through their I²C serial interface. The DS185x devices have internal EEPROM that is used for configuring device settings, as general-purpose memory, and as Lookup tables for calibration. To ease the programming of the tables, the software's File tab lets you upload a correctly formatted text file into the memory. This application note explains the formatting required for the Lookup tables, and other precautions to take while using this feature of the DS185XEVKIT software.

The File Tab in the DS185XEVKIT Software

Figure 1 illustrates the File section of the DS185x evaluation kit ([DS185XEVKIT](#)) software. You use the *Gen Template* and the *Fill Device* buttons to program a device. The *Gen Template* button is used first to generate a template for importing into Microsoft Excel or any other spreadsheet program. This imported file can be modified, saved, and then later uploaded into the device by using the *Fill Device* button.

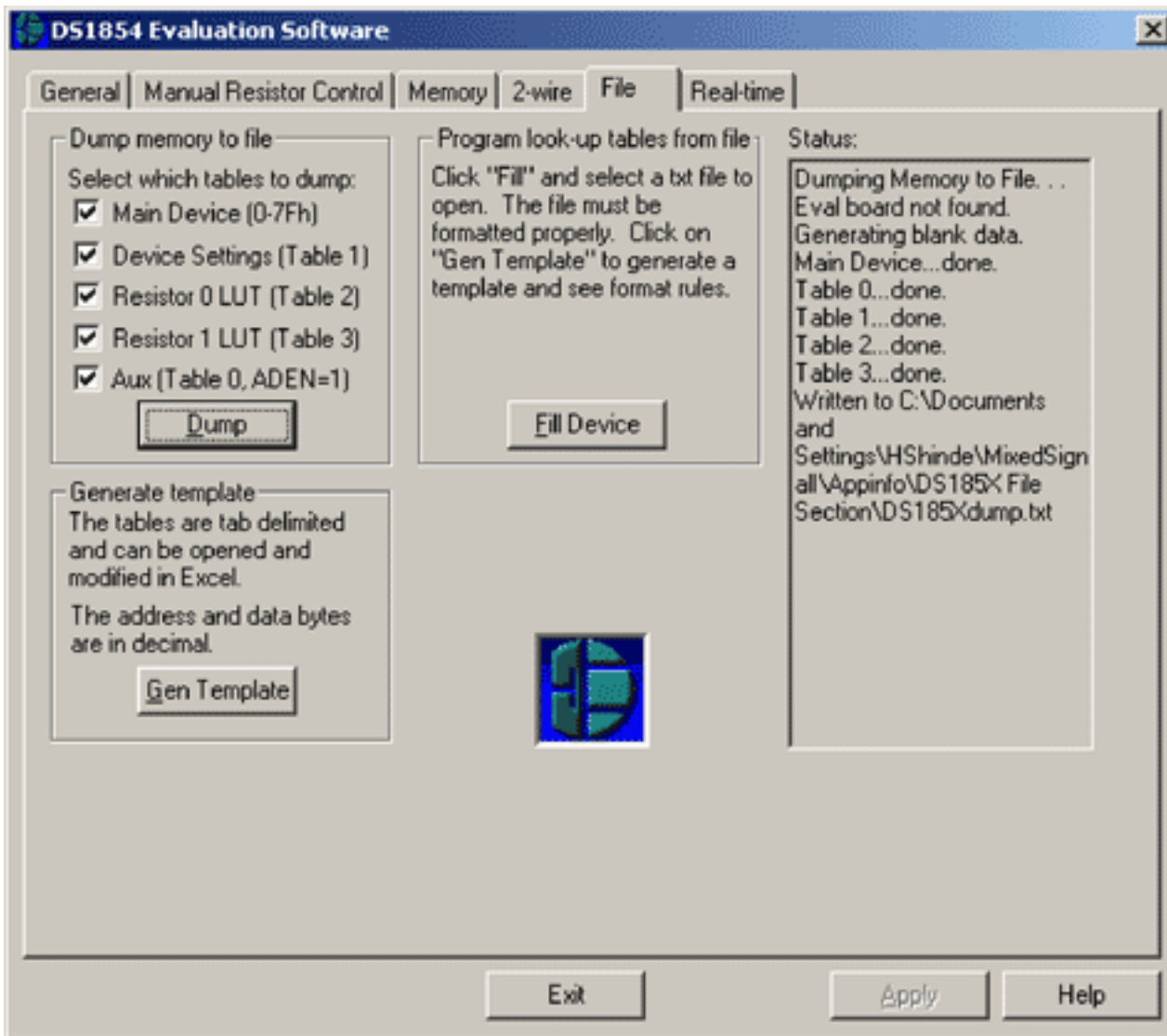


Figure 1. The File tab in the DS185XEVKIT software.

Gen Template

The *Gen Template* button provides the template format of the text file used to program the memory tables. This button is useful anytime the user wants to create a new set of values for programming the device. On executing *Gen Template*, the program prompts the user for a file name and location to save the template file. This template file is a tab-delimited text file, and is how you start creating the actual file used for programming the memory tables. The default file name is DS185xTemplate.txt; each table has a separate section in the text file. Open the template file in Microsoft™ Excel.

Modifying the Excel File for Programming

Modify the data in the Excel file for each table until the spreadsheet reads as desired. If you want to program only one Lookup table, delete the unused tables. The program uses *decimal* values for programming the memory. For the Lookup tables, the entire table must be programmed. For the other tables, programming can be done one byte at a time. Once the contents of the table are correct, save the file as a text file.

Fill Device

Press the *Fill Device* button. A dialog prompts for the location and name of the text file. Navigate to the file that

you saved as a text file in the previous step, select it, and press OK. The program parses through the file, reads one line at a time looking for inconsistencies, and converts the text to lower case as it reads. The parser begins on the first line and treats each line as a comment until the first "tag" is found. Appearing at the beginning of every line in the text file, the tag identifies whether that line is a comment or a valid input. A list of tags is shown in **Figure 2** below.

Tag	What Tag Signifies
Main Device	Values below this tag are for programming 'Lower Memory'.
Table 1	Values below this tag are for programming Table 1.
Table 2	Values below this tag are for programming Table 2.
Table 3	Values below this tag are for programming Table 3.
Table 4	Values below this tag are for programming Table 4.
Table 5	Values below this tag are for programming Table 5.

Figure 2. The possible tags in the template file.

Any line starting with ";" is a comment and is ignored. The user can comment out tables which are not intended to be programmed. The Main Device and Table 1 are commented in the template file. Consequently, to program a Table, 'uncomment' the Table tag and the lines for the registers to be programmed (that is, remove the ";" at the beginning of the line).

The parser recognizes the beginning of a particular table when it sees no comment tag and sees text that starts with the table number. Programming Table 3, for example, would start with the tag, Table 3 (see Figure 2). Following this table indicator, the parser then starts looking for numeric data in a particular format for programming that table within the device. As indicated in the template file, the data should have the following format:

Address Data Comment fields

The parser is only interested in the Address and the Data and looks to see if the numeric data satisfy the limits of that particular table. If the parser determines that the data do not satisfy the table requirements, it indicates an error.

As soon as the parser sees non-numeric data or a carriage return, it assumes that the programming for the particular table is done. The parser then starts looking for either the beginning of a new table (indicated by the corresponding table indicator) or an end of file, where it returns control to the main program. The program reports what it has done in the status window, which should be checked to verify that no errors occurred. Errorcodes and the corresponding Errors are provided in **Figure 3** below.

Errorcode*	Error
x05	No data found after tag. This occurs if no numeric data is found following a table indicator.
x10	Invalid address/data pair. This occurs if the numeric address and data are beyond the limits of address and data for the corresponding table.
x15	2-wire communication error.
x20	Board not present.
x25	Desired address to write is greater than 127 decimal.
x30	Table format error.

Figure 3. Errorcode and the errors that can occur when entered data do not satisfy template parameters.

* Note that the x in the Errorcode references a particular table. **Figure 4** below indicates the different tables and the corresponding value of x.

x	Table
	Main memory (error codes would be 05, 10, etc.)
1	Table 1
2	Table 2
3	Table 3
4	Table 4
5	Table 5

Figure 4. The tables that correspond to the values of x.

Even if only one value has to be changed in a Lookup table, the user must ensure that the entire table is programmed. Individual bytes can be programmed for the other tables used for configuration.

The tables for the DS1856 are ordered differently, and described in the data sheet. The program generates a separate text file for the DS1856, which can be then used for programming its tables.

Application Note 3751: www.maxim-ic.com/an3751

More Information

For technical support: www.maxim-ic.com/support

For samples: www.maxim-ic.com/samples

Other questions and comments: www.maxim-ic.com/contact

Automatic Updates

Would you like to be automatically notified when new application notes are published in your areas of interest?
[Sign up for EE-Mail™.](#)

Related Parts

DS1854: [QuickView](#) -- [Full \(PDF\) Data Sheet](#)

DS1856: [QuickView](#) -- [Full \(PDF\) Data Sheet](#) -- [Free Samples](#)

DS1858: [QuickView](#) -- [Full \(PDF\) Data Sheet](#) -- [Free Samples](#)

DS1859: [QuickView](#) -- [Full \(PDF\) Data Sheet](#) -- [Free Samples](#)

AN3751, AN 3751, APP3751, Appnote3751, Appnote 3751

Copyright © by Maxim Integrated Products

Additional legal notices: www.maxim-ic.com/legal