

APPLICATION NOTE 3746

Simple Power Monitor

Abstract: This circuit allows an A/D converter to monitor a system supply voltage by connecting the supply directly to the ADC's reference input.

Systems in which an analog-digital converter (ADC) monitors the supply voltage must contend with the condition in which the ADC reference is usually lower than the supply voltage (**Figure 1**). An external resistor-divider can pull the supply voltage within the ADC's range, but even 0.1% resistors introduce an error that may be objectionable in certain applications.

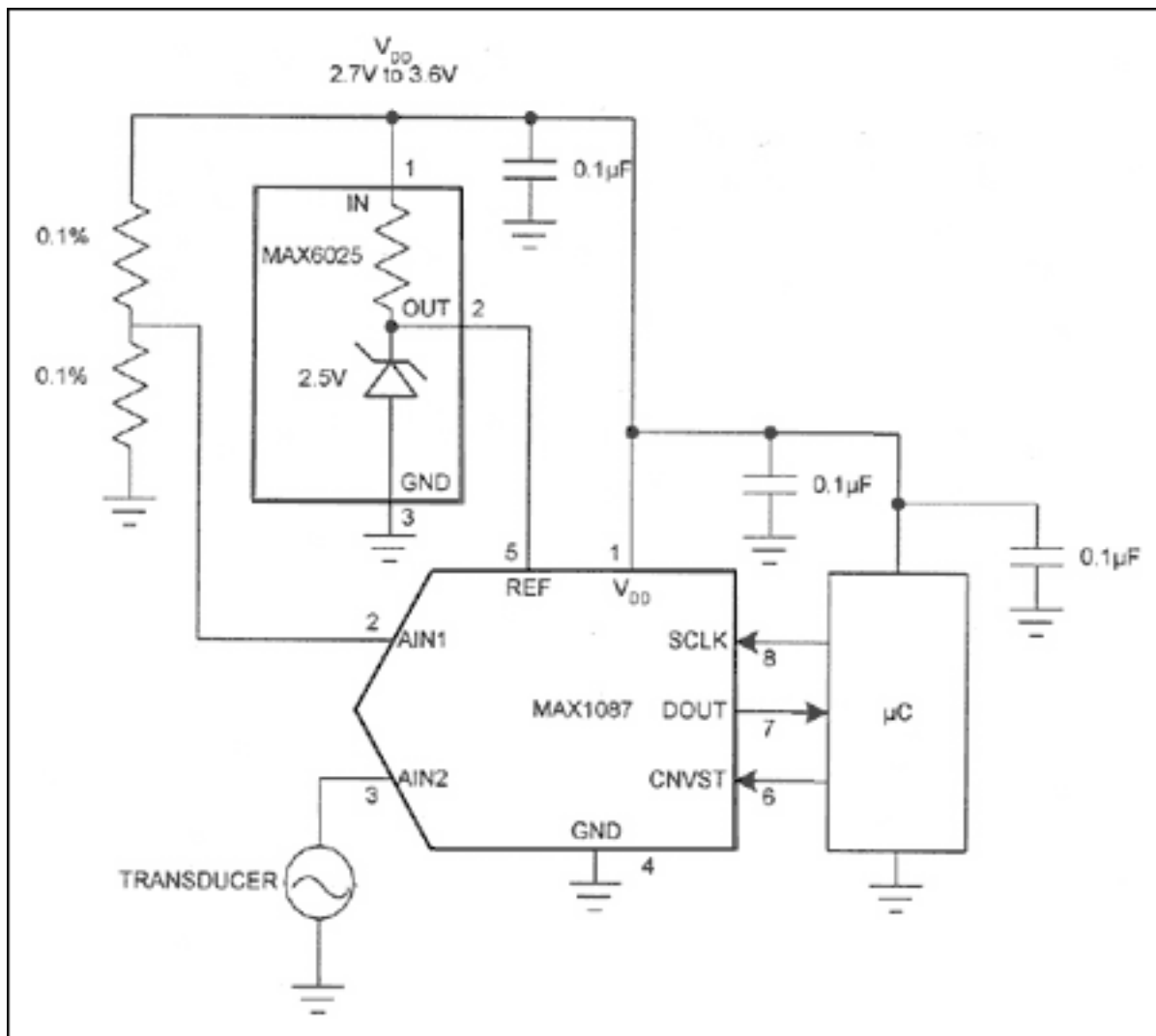


Figure 1. A supply-monitoring circuit like the one shown here usually requires that the ADC input be lower than the reference voltage. Consequently the circuit must include a resistive divider (and associated error) at the ADC input.

One solution to the ADC reference voltage problem is simply to eliminate the divider (**Figure 2**). You can relate the reference to the supply voltage by connecting the supply voltage as a reference, and the reference (2.500V for the [MAX6025A](#)) to an input. As Figure 2 shows for the [MAX1087](#), the ADC must be capable of accepting an external reference as high as the supply voltage. The other channels are now measured as a ratio to the supply

voltage instead of the reference, but software can correct that problem.

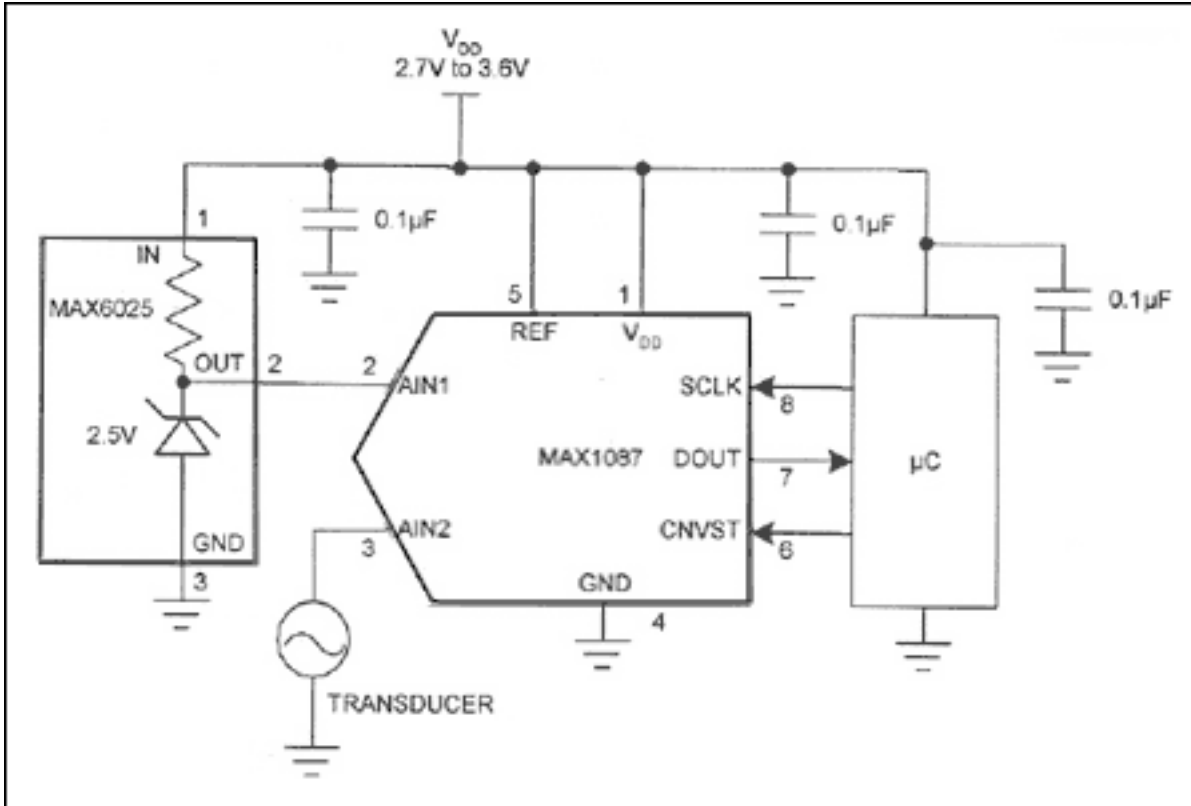


Figure 2. The connections shown enable this ADC (which allows V_{IN} to be as high as the reference) to monitor supply voltage without the divider included in Figure 1.

Because the supply rail serves as a reference, any noise on the rail disturbs all channels. You may, therefore, need to add a local lowpass filter to quiet the supply voltage in noisy environments.

This design idea appeared in the April 28, 2005 edition of *EDN* magazine.

Application Note 3746: www.maxim-ic.com/an3746

More Information

For technical support: www.maxim-ic.com/support

For samples: www.maxim-ic.com/samples

Other questions and comments: www.maxim-ic.com/contact

Automatic Updates

Would you like to be automatically notified when new application notes are published in your areas of interest?

[Sign up for EE-Mail™.](#)

Related Parts

MAX1087: [QuickView](#) -- [Full \(PDF\) Data Sheet](#) -- [Free Samples](#)

MAX6025: [QuickView](#) -- [Full \(PDF\) Data Sheet](#) -- [Free Samples](#)

AN3746, AN 3746, APP3746, Appnote3746, Appnote 3746

Copyright © by Maxim Integrated Products

Additional legal notices: www.maxim-ic.com/legal

