



#### APPLICATION NOTE 3568

## Using the MAXQ2000 with the MAX4397 to Create an Inexpensive Audio/Video Source Selector

*Abstract: This application note shows an application circuit and provides all the firmware required to interface the MAXQ2000 microcontroller (MAXQ20 core) to the MAX4397. The example assembly program was written and assembled specifically for the MAXQ2000 using the free MAX-IDE version 1.0 (Build Date: Nov 18 2004). Download the free [MAX-IDE](#) from Maxim's website.*

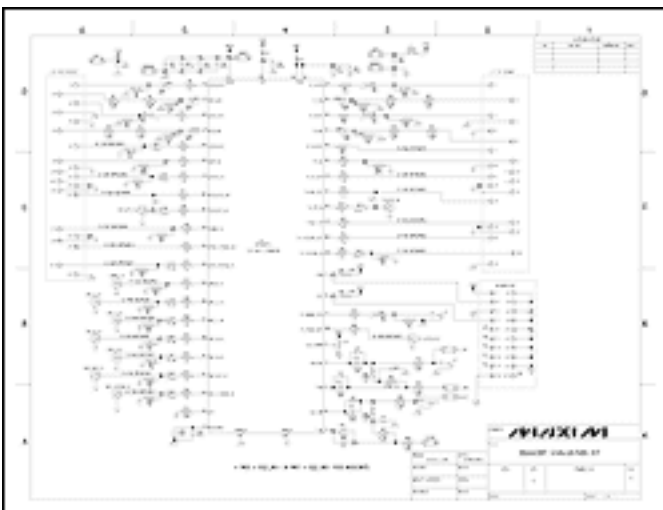
### MAX4397 Overview

The MAX4397 is a dual, SCART, switch-matrix IC that routes audio and video signals between an MPEG encoder and two external SCART connectors for the European consumer market. Using this application note, the MAX4397 can be used as an inexpensive and simple audio/video source selector at a fraction of the cost of commercial products.

### Hardware Overview

The application circuit utilizes the [MAX4397EVKIT](#) and [MAXQ2000-KIT](#).

The MAX4397 EV kit consists of the MAX4397, all required passive components, and a proven PCB layout. The MAX4397EV kit schematic is shown in **Figure 1**. The MAXQ2000 is not present on the MAX4397 EV kit board; it was, however, added to the system by connecting SCL, SDA, and GND from the MAXQ2000 EV kit to the MAX4397 EV kit. In addition, +5V must be applied to VDIG (J3-1) of the MAX4397 EV kit.



[For Larger Image](#)

Figure 1. MAX4397EV kit schematic.

The MAXQ2000 EV kit contains a complete set of software, hardware, sample code and documentation needed to start designing with MAXQ2000. Schematics for the MAXQ2000-KIT are available in the [data sheet](#). The MAXQ2000 EV kit contains three pushbutton switches used in this application for selecting audio/video source 1 (SW5), audio/video source 2 (SW4), and reset (SW2).

## Audio and Video Ground Planes

It is good practice to separate the audio and video ground planes, as shown in **Figure 2**. Connect both ground planes together by shorting the GND<sub>AUD</sub> and GND<sub>VID</sub> pads at the lower edge of the board on the top side. The digital ground should be star-connected where the audio and video grounds connect. If the J3 connector is used for connecting the I<sup>2</sup>C interface from the MAXQ2000 EV kit to the MAX4397 EV kit, then the digital ground will already be starred in the proper location, as shown in **Figure 3**.

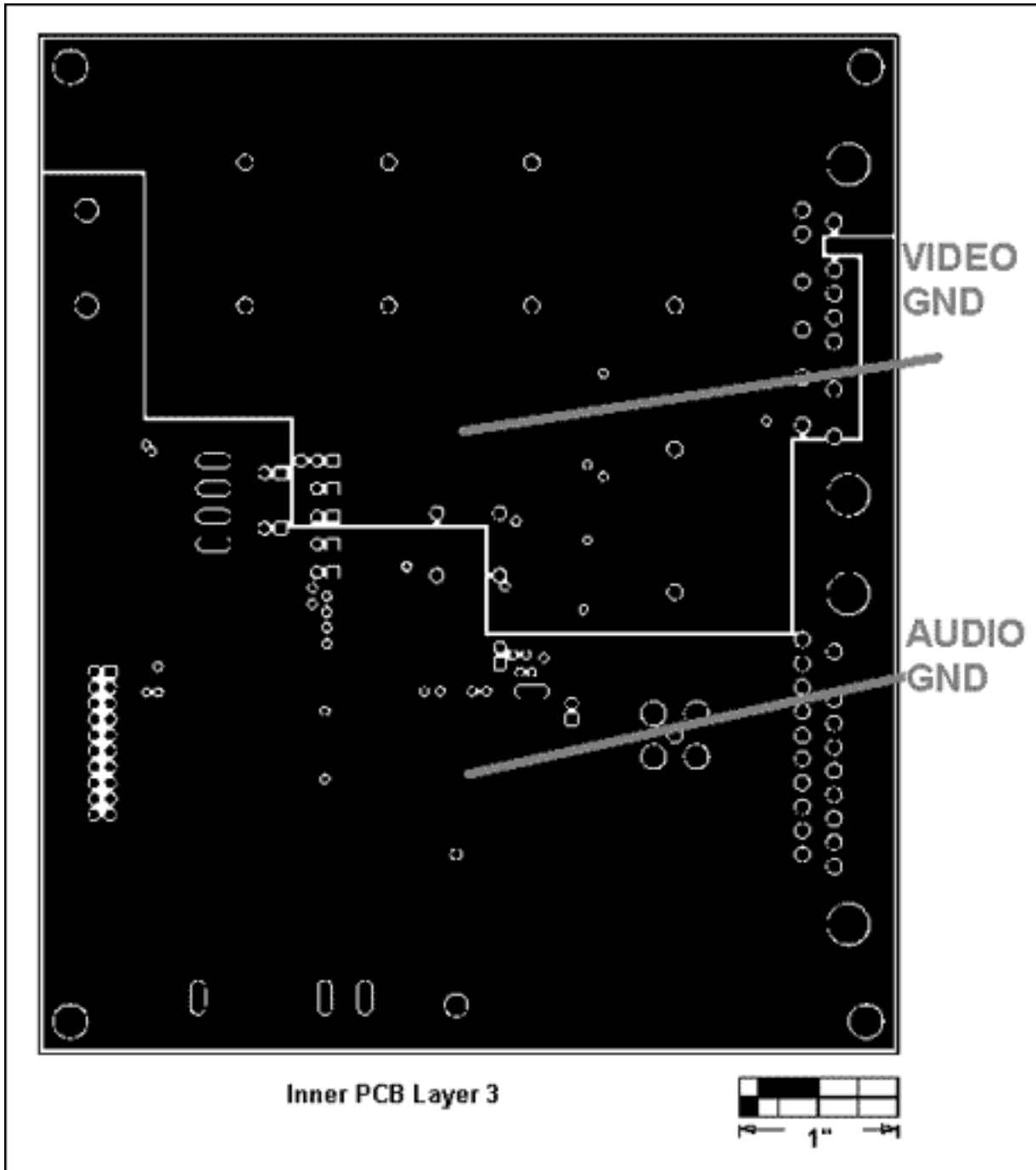


Figure 2. Separating audio and video grounds.

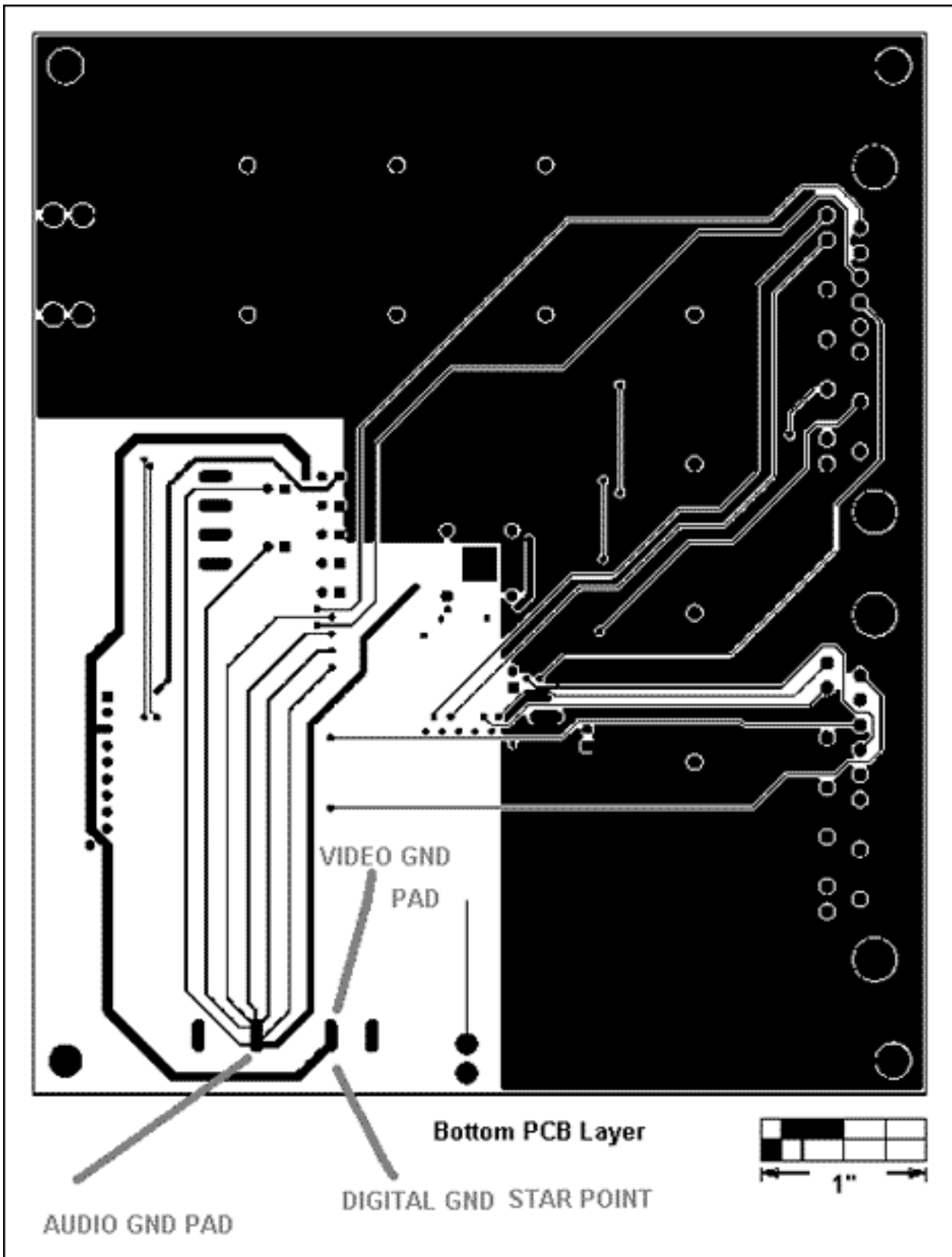


Figure 3. Starring the digital ground.

## Firmware Overview

The example assembly program shown in **Listing 1** communicates to the MAX4397 by bit-banging an I<sup>2</sup>C interface on the MAXQ2000's general-purpose input/output (GPIO) ports. The MAXQ2000's 16MHz system clock allows the bit-banged I<sup>2</sup>C interface to run up to 400KHz; the firmware's default I<sup>2</sup>C clock speed is 100KHz.

**Table 1** shows the I<sup>2</sup>C WriteByte operations required to initialize the MAX4397 after power-up.

Once the MAX4397 is initialized, the program waits for the user to press one of the MAXQ2000 EV kit's three pushbutton switches. Press pushbutton switch SW5 to route the video source 1 (TV\_Y/CVBS\_IN) to the output (TV\_Y/CVBS\_OUT) and the audio source 1 (TV\_IN\_) to the output (TV\_OUT\_). **Table 2** shows the I<sup>2</sup>C WriteByte operations that occur after SW5 is pressed. Press pushbutton switch SW4 to route the video source 2 (VCR\_Y/CVBS\_IN) to the output (TV\_Y/CVBS\_OUT) and the audio source 2 (VCR\_IN\_) to the output (TV\_OUT\_). **Table 3** shows the I<sup>2</sup>C WriteByte operations that occur after SW4 is pressed. Pressing pushbutton switch SW2 resets the firmware to the power-on reset state.

Download: [Listing 1](#)

Listing 1. An assembly example program that interfaces the MAXQ2000 to the MAX4397 by implementing a bit-banged I<sup>2</sup>C interface.

Download: [Source Code](#)

**Table 1. I<sup>2</sup>C WriteByte Operations to Initialize the MAX4397**

I <sup>2</sup> C/SMBus Protocol	Device Slave Address	Register Address	8-Bit Data
WriteByte#1	0x96	0x0D	0x04
	10010110b	00001101b	00000100b
WriteByte#2	0x96	0x00	0x46
	10010110b	00000000b	01000110b

The I<sup>2</sup>C WriteByte operations initialize the MAX4397 by enabling the TV\_Y/CVBS\_OUT output and disabling the TV\_OUT\_ mute.

**Table 2. I<sup>2</sup>C WriteByte Operations for Routing Video and Audio Source 1**

I <sup>2</sup> C/SMBus Protocol	Device Slave Address	Register Address	8-Bit Data
WriteByte#1	0x96	0x06	0x1B
	10010110b	00000110b	00011011b
WriteByte#2	0x96	0x01	0x0E
	10010110b	00000001b	00001110b

The I<sup>2</sup>C WriteByte operations route the video source 1 (TV\_Y/CVBS\_IN) to the output (TV\_Y/CVBS\_OUT) and the audio source 1 (TV\_IN\_) to the output (TV\_OUT\_).

**Table 3. I<sup>2</sup>C WriteByte Operations for Routing Video and Audio Source 2**

I <sup>2</sup> C/SMBus Protocol	Device Slave Address	Register Address	8-Bit Data
WriteByte#1	0x96	0x06	0x1A
	10010110b	00000110b	00011010b
WriteByte#2	0x96	0x01	0x0D
	10010110b	00000001b	00001101b

The I<sup>2</sup>C WriteByte operations route the video source 2 (VCR\_Y/CVBS\_IN) to the output (TV\_Y/CVBS\_OUT) and the audio source 2 (VCR\_IN\_) to the output (TV\_OUT\_).

---

Application Note 3568: <http://www.maxim-ic.com/an3568>

### More Information

For technical questions and support: <http://www.maxim-ic.com/support>

For samples: <http://www.maxim-ic.com/samples>

Other questions and comments: <http://www.maxim-ic.com/contact>

## Related Parts

MAX4397: [QuickView](#) -- [Full \(PDF\) Data Sheet](#) -- [Free Samples](#)

MAX4397EVKIT: [QuickView](#) -- [Full \(PDF\) Data Sheet](#)

MAX4399: [QuickView](#) -- [Full \(PDF\) Data Sheet](#) -- [Free Samples](#)

MAXQ2000: [QuickView](#) -- [Full \(PDF\) Data Sheet](#) -- [Free Samples](#)

MAXQ2000-KIT: [QuickView](#) -- [Full \(PDF\) Data Sheet](#)

AN3568, AN 3568, APP3568, Appnote3568, Appnote 3568

Copyright © by Maxim Integrated Products

Additional legal notices: <http://www.maxim-ic.com/legal>