

APPLICATION NOTE 3439

PIC'ing the MAX5591: Interfacing a PIC Microcontroller to the MAX5591 Fast-Settling DAC

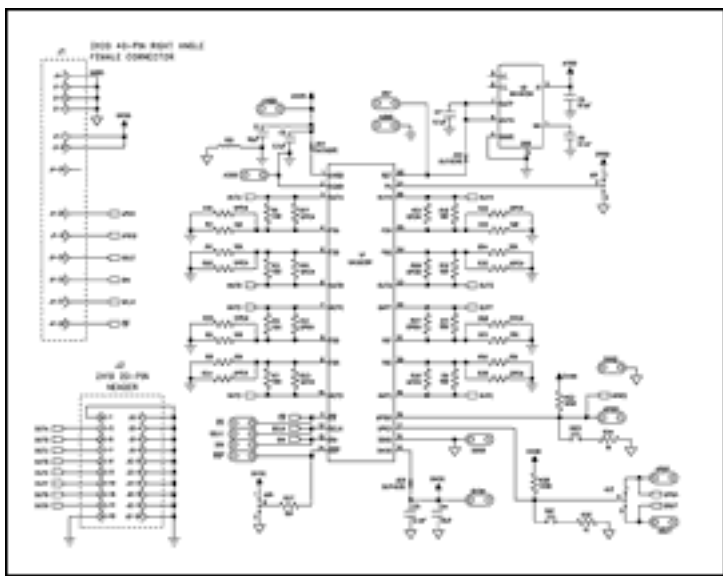
A tutorial is presented on interfacing a PIC18F442 microcontroller to the MAX5591 fast-settling DAC, with an example program.

MAX5591 Overview

The MAX5591 is a 12-bit, fast-settling DAC featuring a 3-Wire SPI™ serial interface. The MAX5591 interface is capable of supporting SPI up to 20MHz, with a maximum settling time of 3 μ s. This application note contains descriptions of an application circuit and all the firmware required to interface the fastest line of PIC microcontrollers (the PIC18F core) to the MAX5591. The example assembly program was written specifically for the PIC18F442, using the free assembler provided in MPLAB® IDE version 6.10.0.0.

Hardware Overview

The application circuit utilizes the MAX5591EVKIT, which consists of the MAX5591, an ultra-high-precision voltage reference (MAX6126), two push-button switches, gain-setting resistors, and a proven PCB layout. The PIC18F442 is not present on the MAX5591EVKIT board, but it was added to the system here to complete the application schematic shown in **Figure 1**. The /CS\, SCLK, DIN and DOUT pads on the MAX5591EVKIT allow an easy connection for the SPI serial interface.



[For Larger Image](#)

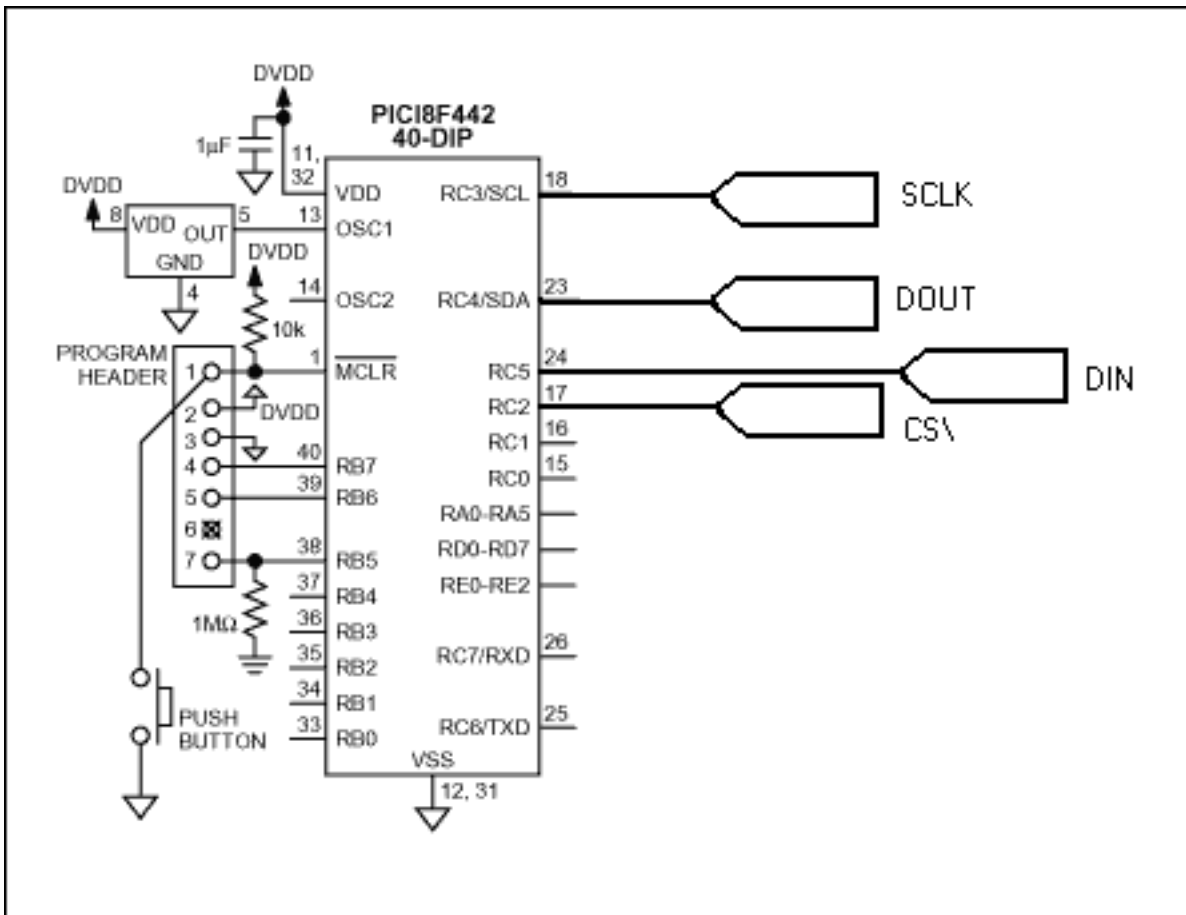


Figure 1. MAX5591 application schematic

Analog and Digital Ground Planes

It is good practice to separate the analog and digital ground planes. An example of this is shown in **Figure 2**. Both ground planes should be connected together through a ferrite bead. Using a ferrite bead such as the TDK MMZ1608B601C to connect both grounds prevents the microcontroller's system clock and its harmonics from feeding into the analog ground. Knowing that the system clock of the PIC18F442 is 40MHz, the MMZ1608B601C was chosen for its specific impedance vs. frequency characteristics. **Figure 3** shows the impedance vs. frequency curve for the MMZ1608B601C.

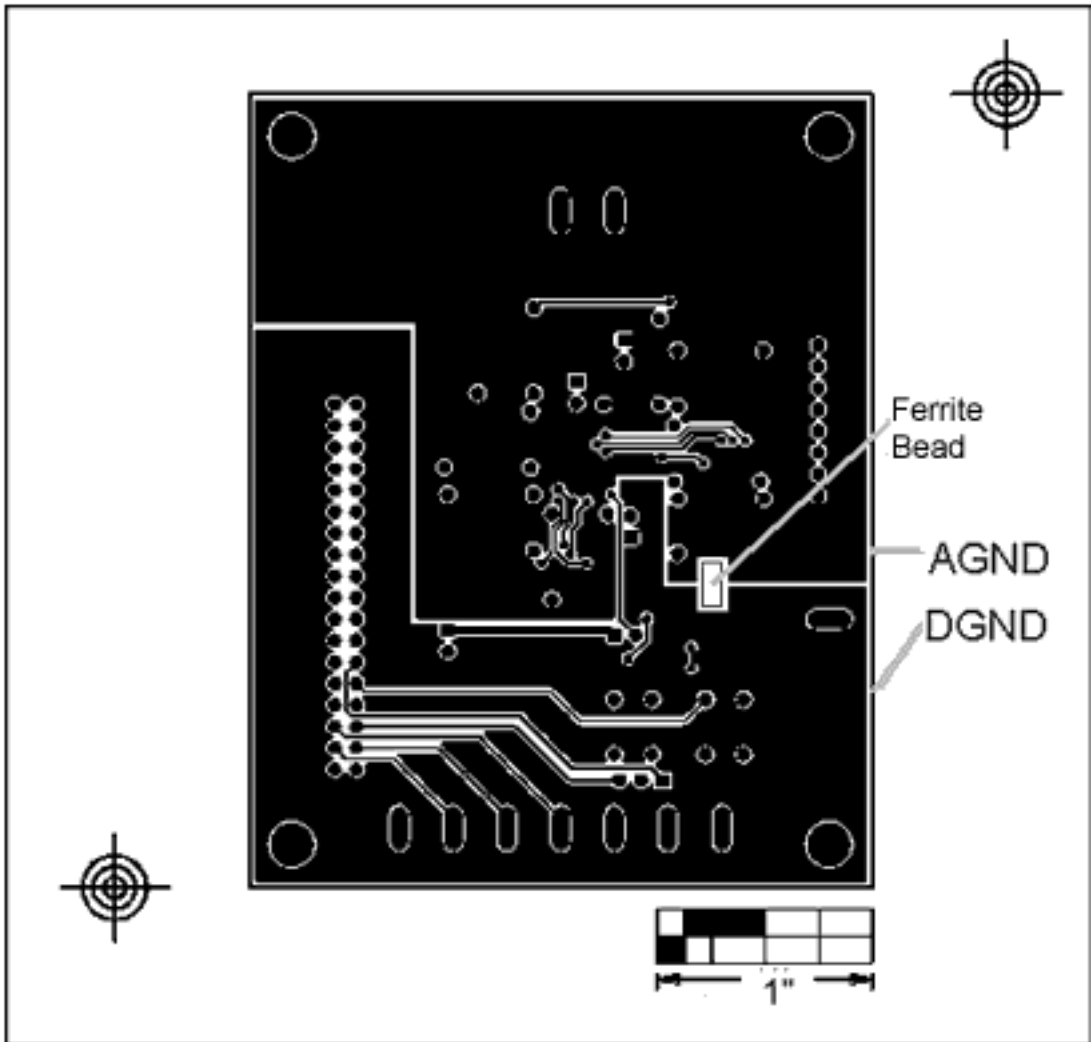


Figure 2. Separating analog and digital grounds

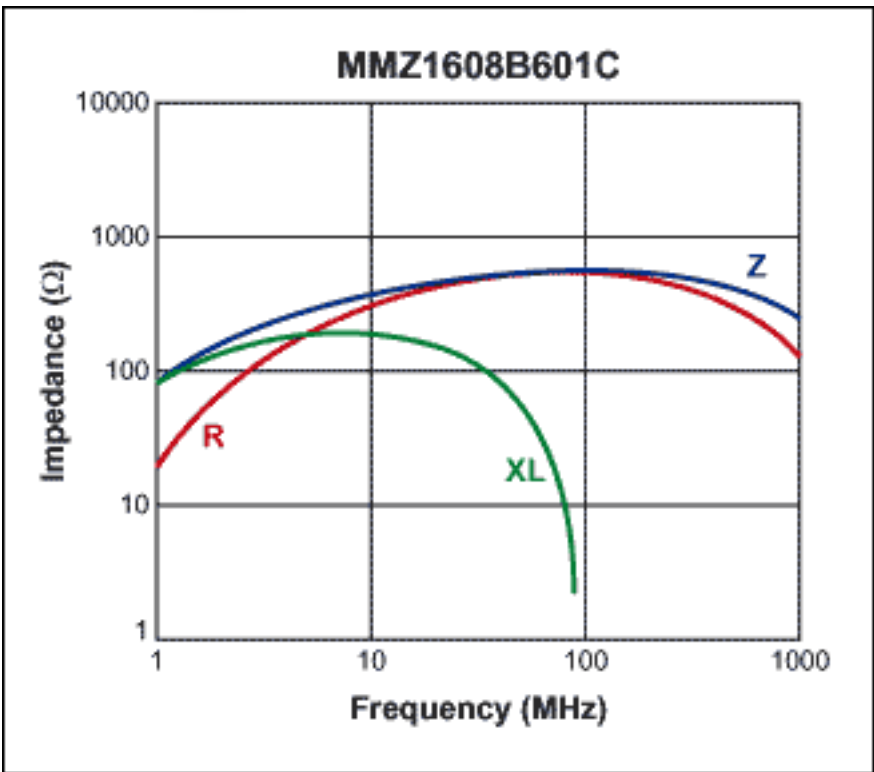


Figure 3. Impedance vs. frequency curve for the TDK MMZ1608B601C ferrite bead

SPI is a trademark of Motorola, Inc.
MPLAB is a registered trademark of Microchip Technology, Inc.

Application Note 3439: <http://www.maxim-ic.com/an3439>

More Information

For technical questions and support: <http://www.maxim-ic.com/support>

For samples: <http://www.maxim-ic.com/samples>

Other questions and comments: <http://www.maxim-ic.com/contact>

Related Parts

MAX5590: [QuickView](#) -- [Full \(PDF\) Data Sheet](#) -- [Free Samples](#)

MAX5591: [QuickView](#) -- [Full \(PDF\) Data Sheet](#) -- [Free Samples](#)

MAX5592: [QuickView](#) -- [Full \(PDF\) Data Sheet](#) -- [Free Samples](#)

MAX5593: [QuickView](#) -- [Full \(PDF\) Data Sheet](#) -- [Free Samples](#)

MAX5594: [QuickView](#) -- [Full \(PDF\) Data Sheet](#) -- [Free Samples](#)

MAX5595: [QuickView](#) -- [Full \(PDF\) Data Sheet](#) -- [Free Samples](#)

AN3439, AN 3439, APP3439, Appnote3439, Appnote 3439

Copyright © 2005 by Maxim Integrated Products

Additional legal notices: <http://www.maxim-ic.com/legal>