

INTRODUCTION

Many devices use a serial port as a means for communicating with other electronic devices—everything from very well-known examples like personal computers and modems to manufacturing and industrial automation equipment. In fact, for many, a serial port provides the sole mechanism of communicating with the outside world. Such devices have no direct means of participating in a larger computer network. For this reason bridging the communications gap between serial-only devices to networked hosts is one of the most popular applications of Tiny Internet Interfaces (TINI[®]) technology. This application note covers both the hardware and software aspects of developing serial applications on TINI.

The TINI runtime environment for the TINI Board Model 390 (TBM390) can support up to four serial ports. Five serial ports are supported for the TINI Board Model 400 (TBM400). The serial ports are designated `serial0` through `serial4`. The UARTs used by `serial0`, `serial1`, and `serial4` are integrated within TINI's microcontroller, and are termed "internal" serial ports. The UARTs used by `serial2` and `serial3` require a dedicated external dual-UART chip. These are referred to as "external" serial ports.

Internal Serial Ports

Because `serial0`, `serial1`, and `serial4` use internal UARTs, they are more efficient. The internal serial port drivers do not have to do nearly as much work to load or unload data from the UART. However, the internal serial ports are somewhat limited in terms of configuration options. The serial character configurations supported are:

- 8 data bits, 1 stop bit, no parity (default)
- 8 data bits, 1 stop bit, with parity (odd/even only)
- 7 data bits, 2 stop, no parity
- 7 data bits, 1 stop, with parity (odd/even only)

Configurations that use only 5 or 6 data bits or 1.5 stop bits are impossible if using the internal ports. However, this is seldom of practical concern. The options listed allow the internal ports to communicate with most common serial devices. The internal ports also support XON/XOFF flow control. However, a single set of hardware handshake lines is shared between all of the internal ports. This implies that only one port at a time can use RTS/CTS flow control. By default `serial0` does not own the hardware handshake signals. Using TINIOS 1.0x, this ownership can be changed using the method `setRTSCTSFlowControlEnable` defined in class `com.dalsemi.system.TINIOS`. TINIOS 1.1x applications must use the `setSerial` method with `TINIOS.SERIAL_SET_RTSCCTS_FLOW_CONTROL` as the first parameter.

```
public static boolean setRTSCTSFlowControlEnable(int portNumber, boolean enable)
    throws UnsupportedOperationException
public static int setSerial(int cmd, int port, boolean arr)
    throws UnsupportedOperationException
```

The port number must specify one of the internal serial ports (0, 1, or 4). If `enable` is `true`, the hardware handshake signals will be dedicated for use as hardware handshake signals for the specified serial port. If `enable` is `false`, the signals are free to be used with the `com.dalsemi.system.BitPort` class as general purpose TTL I/O.

TINI is a registered trademark of Dallas Semiconductor.

There are a couple of additional points to keep in mind when using `serial1`. First, `serial1` is by default dedicated to the task of communicating with the external 1-Wire[®] line driver. If your TINI hardware implementation does not require (or support) the use of the external 1-Wire adapter, `serial1` can be reclaimed for use with a general-purpose serial port. To override `serial1`'s default usage in TINIOS 1.0x, an application must invoke the `enableSerialPort1` method defined in the `com.dalsemi.system.TINIOS` class. For TINIOS 1.1x, the `setSerial` method should be used, with `TINOS.SERIAL_SET_ENABLE` as the first parameter.

```
public static final void enableSerialPort1()
public static int setSerial(int cmd, int port, boolean arr)
    throws UnsupportedOperationException
```

This option persists across system boots. If you are using the TBM390, you will also need to disable the DS2480B 1-Wire driver. This is accomplished by grounding the `EN2480` signal (pin 26 of the SIMM connector). The other thing to keep in mind, with respect to `serial1`, is that it does not support any data rates below 2400 bps. This is generally not an issue when communicating with modern serial devices.

External Serial Ports

Before the external serial ports can be used, the necessary hardware must be added. The external serial ports consist of five modules: the DUART, the RS-232 level shifters, the interrupt circuit, the decode logic, and a group of decoupling capacitors. Some example circuits for each module that can be used with the E10 socket board are shown in the following figures. The list of materials used for these circuits is also included.

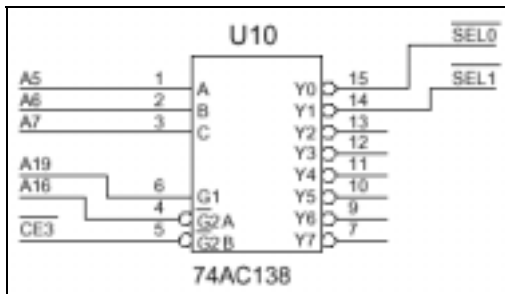


Figure 1. Decode Circuitry

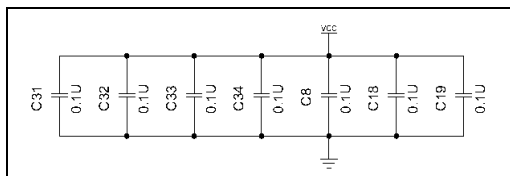


Figure 2. Decoupling Capacitors

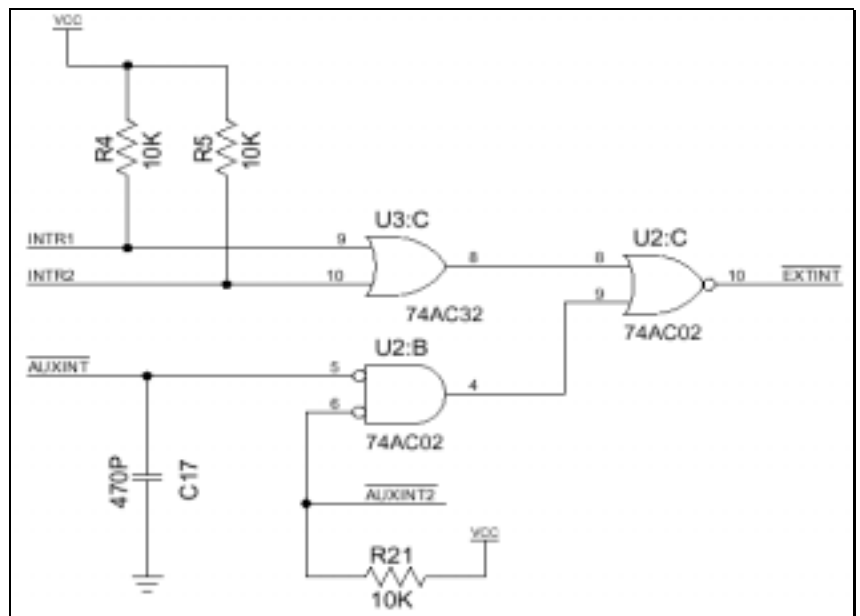


Figure 3. Interrupt Circuitry

1-Wire is a registered trademark of Dallas Semiconductor.

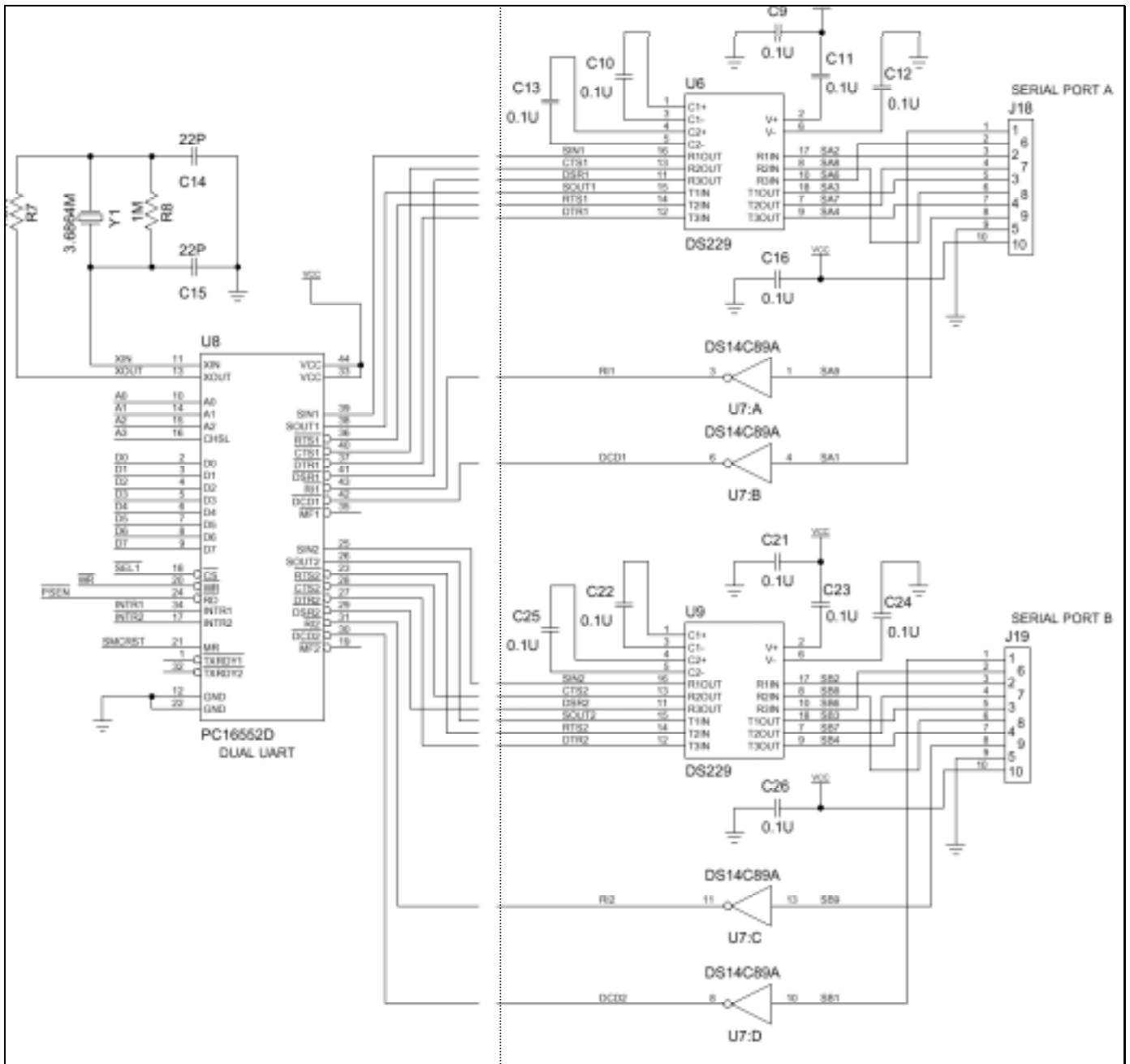


Figure 4. DUART and RS-232 Drivers

Table 1. Components Used for External Serial Ports

COMPONENT	DESCRIPTION	PACKAGE
C9–C13, C8, C16, C18, C19, C21–C25, C26, C31–C34	0.1 μ F	1206
C14	22pF	1206
C15	22pF	1206
C17	470pF	1206
J18, J19	10-pin, 0.1 center header connector	
R4, R5, R21	10k Ω	1206
R7	1.5k Ω	1206
R8	1M Ω	1206
U2	74AC02	14-pin SO
U3	74AC32	14-pin SO
U6, U9	DS229	20-pin TSSOP
U7	National DS14C89A	
U8	National PC16552D	44-PLCC
U10	74AC138	16-pin SO
Y1	3.6864MHz	HC49

Once the hardware has been added, the external serial ports must be enabled using the `setExternalSerialPortEnable` method (TINIOS 1.0x) or the `setSerial` method (TINIOS 1.1x) in the `com.dalsemi.system.TINIOS` class.

```
public static void setExternalSerialPortEnable(int portNum, boolean enable)
public static int setSerial(int cmd, int port, boolean arr)
    throws UnsupportedOperationException
```

The port number must specify one of the external ports (2 or 3). An `enable` value of `true` enables the use of external serial drivers. The settings established by `setExternalSerialPortEnable` persist across system boots.

The external serial drivers allow flexibility where the external UART hardware is mapped into TINI's memory space. The default base address for the external UART is 0x380020. This location can be overridden using the `setExternalSerialPortAddress` method (TINIOS 1.0x) or the `setSerial` method (TINIOS 1.1x) in `com.dalsemi.system.TINIOS`.

```
public static void setExternalSerialPortAddress(int portNum, int address)
public static int setSerial(int cmd, int port, boolean arr)
    throws UnsupportedOperationException
```

The port number must specify one of the external ports (2 or 3). The address refers to the base (or lowest) address consumed in the memory map. The settings established by `setExternalSerialPortAddress` persist across reboots.

Finally, where the internal serial ports are limited in their possible configurations, the external serial ports support all configurations that can be achieved using the Java™ Communications API with the exception of XON/XOFF flow control.

The TINI Runtime Environment, `slush`, and `serial0`

There are a few other things to keep in mind when developing applications that use serial communications. When TINI starts, it transmits progress messages on `serial0` at the data rate of 115,200bps. This can cause confusion for certain embedded serial devices because the data is unsolicited and is transmitted at a speed that may be different from the speed for which the device is configured to receive data. TINIOS 1.0x applications can disable boot progress messages using the `setSerialBootMessagesState` method in class `com.dalsemi.system.TINIOS`. TINIOS 1.1x applications must use the `setSerial` method.

```
public static final void setSerialBootMessagesState(boolean on)
public static int setSerial(int cmd, int port, boolean arr)
    throws UnsupportedOperationException
```

The serial boot message state is persistent across system boots.

TINI's default shell, `slush`, also uses `serial0` to transmit status messages and to allow user logins. To disable the serial server and prevent `slush` from chattering over `serial0` during startup, the line "setenv SerialServer enable" should be removed from the `.startup` file. This will prevent `slush` from chattering over `serial0`. If you want the ability to use `serial0` without disabling `slush`'s serial server, you can use the `setConsoleOutputEnabled` method in the `com.dalsemi.system.TINIOS` class.

```
public static void setConsoleOutputEnabled(boolean set)
```

Calling this method with `set` equal to `false` instructs `slush` to boot silently so as not to interfere with any devices that may be connected to `serial0`.

The last thing to note is that no special action needs to be taken to force `slush`'s serial server to release `serial0` so another application can access it. Whenever another application requests `serial0`, `slush` will automatically relinquish its ownership. Just be sure to specify a sufficient timeout value when attempting to open the port (five seconds is generally large enough).

Conclusion

With the exception of the few methods mentioned here, all serial port programming on TINI can be done using the techniques defined in the Java Communications API. This provides developers an easy and standard way to build serial applications with TINI. These applications will allow TINI to interface with a variety of serial devices, including those devices that were never meant to be part of a larger network.

MAXIM INTEGRATED PRODUCTS/DALLAS SEMICONDUCTOR CONTACT INFORMATION

Company Addresses:

Maxim Integrated Products, Inc.
120 San Gabriel Drive
Sunnyvale, CA 94086
Tel: 408-737-7600
Fax: 408-737-7194

Dallas Semiconductor
4401 S. Beltwood Parkway
Dallas, TX 75244
Tel: 972-371-4448
Fax: 972-371-4799

Product Literature/Samples Requests:

800-998-8800
408-737-7600

Sales and Customer Service:

World Wide Website:

www.maxim-ic.com

Product Information:

www.maxim-ic.com/MaximProducts/products.htm

Ordering Information:

www.maxim-ic.com/BuyMaxim/Sales.htm

FTP Site:

<ftp://ftp.dalsemi.com>