

APPLICATION NOTE 1877

One Resistor Takes Heat from Single-Supply Op Amps

Abstract: To minimize the power dissipation in a single-supply op amp, driving a ground-referenced load, connect a pullup resistor, with value equal to the load resistor between the output and the positive supply voltage. This addition enables the op amp to operate at higher ambient temperatures and drive lower-resistance loads, limited only by its maximum ratings for output voltage and current (rather than the package power dissipation).

To maximize signal swing, the output of a single-supply op amp is usually biased at half the supply voltage (**Figure 1a**). For ground-referenced loads, however, this configuration causes maximum power dissipation in the IC.

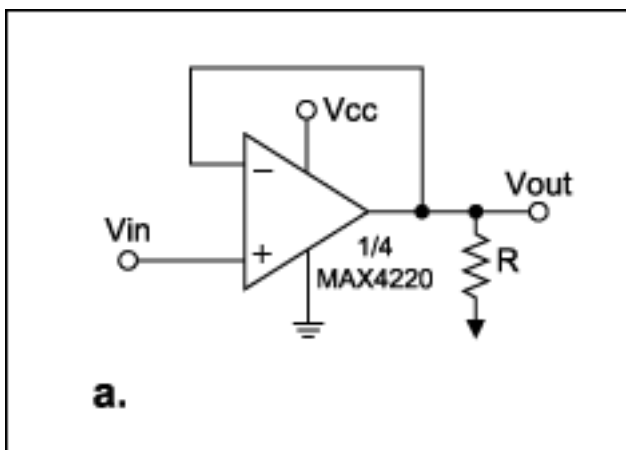


Figure 1a. A single-supply op amp biased at mid- V_{CC} .

The solution is simple and effective: connect a pullup resistor, with value equal to the load resistor, between the output and the positive supply voltage (**Figure 1b**). This addition enables the op amp to operate at higher ambient temperatures and drive lower-resistance loads, limited only by its maximum ratings for output voltage and current (rather than the package power dissipation).

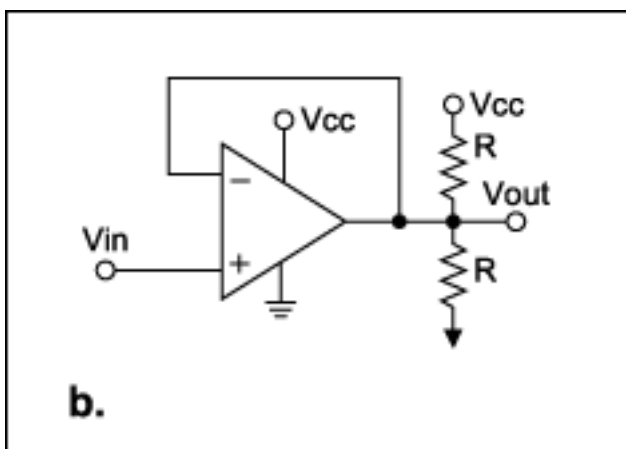


Figure 1b. The power dissipated in Figure 1a is reduced by adding a load-value pullup to V_{CC} .

For example, consider the MAX4220 quad op amp, in which each output drives a 30Ω resistor to ground. For $V_{CC} = 5V$, the device exceeds its package power rating. Connecting 30Ω pullups at each output, however, minimizes the IC's power dissipation because each op-amp's output current is zero. Power is now dissipated in the pull-up resistors and not in the op amps.

Calculating power dissipation for the op amp in Figure 1a is straightforward:

$$P_{DC} = (V_{CC} - V_{OUT}) V_{OUT}/R.$$

Solving the differential equation $dP_{DC}/dV_{OUT} = 0$ for V_{OUT} shows that the op amp's maximum power dissipation ($V_{CC}^2/4R$) occurs when $V_{OUT} = V_{CC}/2$.

The corresponding power calculation for the circuit with load and pullup resistors (Figure 1b) is simpler if you convert the load circuit to its Thevenin equivalent (**Figure 1c**):

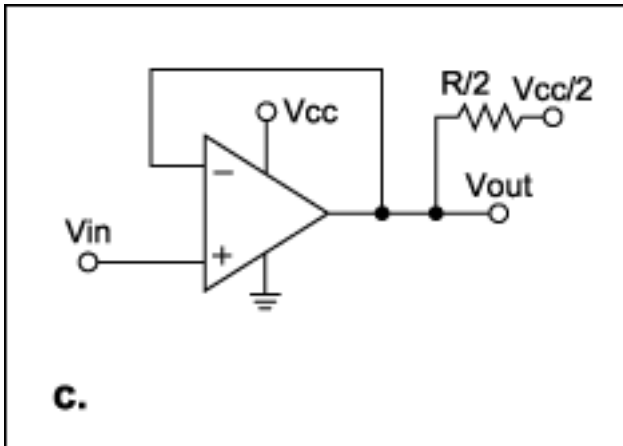


Figure 1c. A Thevenin-equivalent circuit aids analysis.

$$P_{DC} = (V_{CC} - V_{OUT})(V_{OUT} - \frac{1}{2}V_{CC})/\frac{1}{2}R \text{ (for } V_{OUT} \geq \frac{1}{2}V_{CC}\text{),}$$

$$\text{and } P_{DC} = V_{OUT}(\frac{1}{2}V_{CC} - V_{OUT})/\frac{1}{2}R \text{ (for } V_{OUT} \leq \frac{1}{2}V_{CC}\text{).}$$

Again, solving $dP_{DC}/dV_{OUT} = 0$ for these two equations shows that the maximum power dissipation ($V_{CC}^2/8R$) occurs for $V_{OUT} = \frac{3}{4}V_{CC}$ and for $V_{OUT} = \frac{1}{4}V_{CC}$. Note that this maximum power level is only half of that with no pullup resistor. The amplifier with no pullup resistor delivers maximum output current at the $V_{CC}/2$ quiescent point, but with a pullup resistor (**Figure 2**) the op amp delivers no output current at all!

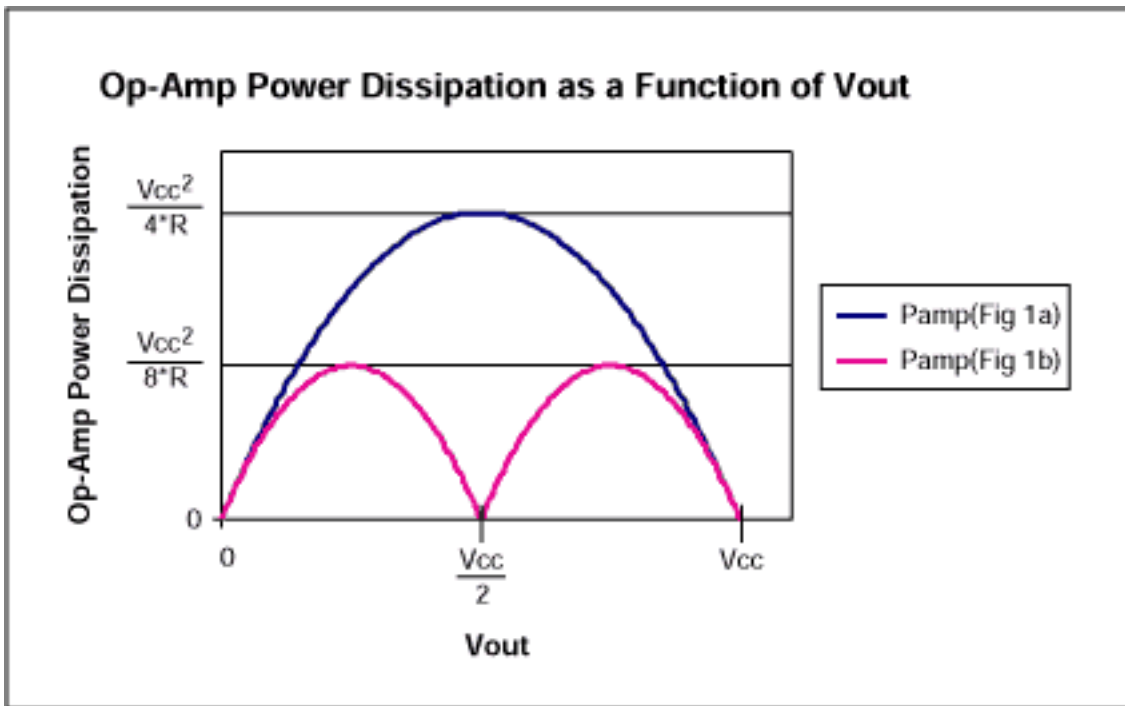


Figure 2. The op amp's maximum power dissipation in Figure 1a is twice that of the op amp in Figure 1b.

Similar power advantages accrue for AC applications. Consider a sinusoidal signal superimposed on a DC level of $V_{CC}/2$: $V_{OUT} = \frac{1}{2}V_{CC} + V_p \sin \omega t$, where V_p is the peak value of the sinusoid. The resulting waveforms are shown in **Figure 3**. The simplest method for calculating power dissipation in the op amp is to solve a power-balance equation, in which supply power equals the sum of power dissipated in the load and in the op amp. Thus, the op amp dissipation equals supply power minus load power.

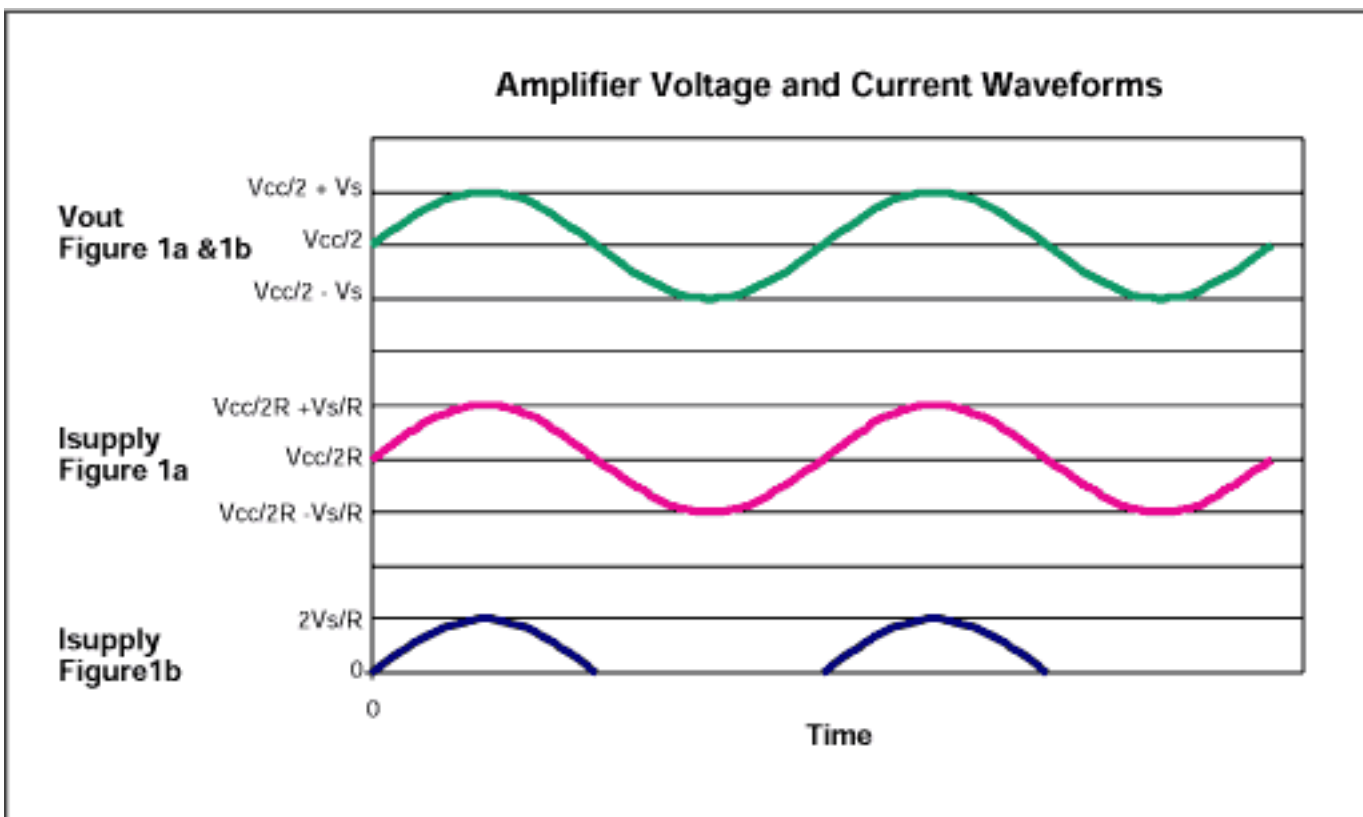


Figure 3. These waveforms illustrate the op amp voltage and current relationships in Figures 1a and 1b.

For the case of Figure 1a, supply power equals the average supply current ($V_{CC}/2R$) times V_{CC} , i.e., $V_{CC}^2/2R$.

Power in the load is the sum of the DC and AC components: $(1/R)(\frac{1}{2}V_{CC})^2 + (1/R)(V_p/2^{1/2})^2$. Thus, supply power

minus load power for the Figure 1a circuit is $P_{AC} = V_{CC}^2/4R - V_p^2/2R$, as shown in **Figure 4**.

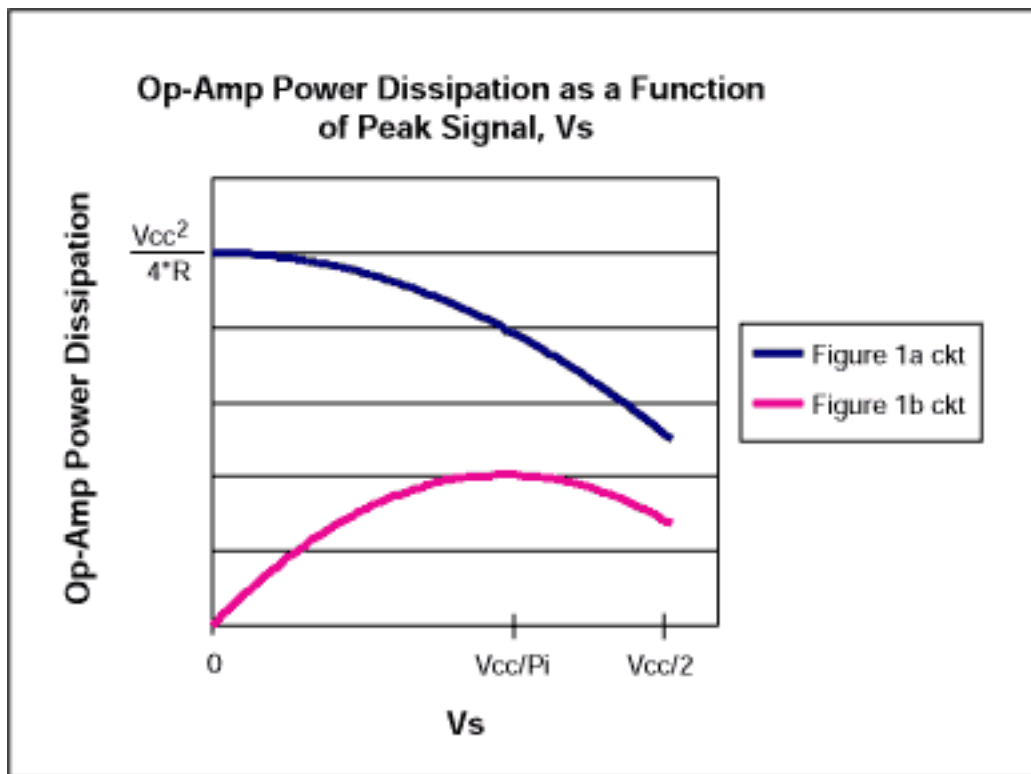


Figure 4. Power dissipation in the op amp of Figure 1a is always far greater than that of 1b.

For the Figure 1b circuit, supply power equals the average supply current $2V_p/\pi R$ times V_{CC} as shown in Figure 3, i.e., $2V_p V_{CC}/\pi R$. Power in the load is $2(V_p/2^{1/2})^2/R$, and the supply power minus load power is $P_{AC} = 2V_{CC}V_p/\pi R - V_p^2/R$ as shown in Figure 4. Solving the equation $dP_{AC}/dV_p = 0$ for V_p shows that the Figure 1b op amp's maximum power dissipation $(V_{CC}/\pi)^2/R$ occurs when $V_p = V_{CC}/\pi$.

Thus, you can minimize the power dissipation in a single-supply op amp, driving a ground-referenced load, by adding a single external resistor.

A similar version of this article appeared in the July 23, 2001 issue of *Electronic Design* magazine.

Application Note 1877: www.maxim-ic.com/an1877

More Information

For technical questions and support: www.maxim-ic.com/support

For samples: www.maxim-ic.com/samples

Other questions and comments: www.maxim-ic.com/contact

Keep Me Informed

Preview new application notes in your areas of interest as soon as they are published. Subscribe to [EE-Mail - Application Notes](#) for weekly updates.

Related Parts

MAX4220: [QuickView](#) -- [Full \(PDF\) Data Sheet](#) -- [Free Samples](#)

AN1877, AN 1877, APP1877, Appnote1877, Appnote 1877
Copyright © by Maxim Integrated Products
Additional legal notices: www.maxim-ic.com/legal