

APPLICATION NOTE 1159

Level Translators For SPI™ and I²C Bus Signals

Abstract: A serial interface is often used for board-level communication between different integrated circuits, especially in space-constrained applications at low-to medium data-rates. The most popular serial interfaces are I²C and SPI™. If a system has different supply voltages for the μ P and for peripheral devices, suitable level translators are required to be able to use one of these serial interfaces. There are several reasons why today's systems have two or more supply-voltages. High-speed μ Ps and DSPs are implemented on the most advanced processes to get maximum performance with the lowest power consumption. Another reason for different supply voltages is the use of ASICs or FPGAs together with a μ P. For all these applications the designer needs a uni- or bi-directional level translator for the bus signals. The MAX3372E-MAX3379E/MAX3390E-MAX3393E family of level translators was designed to solve these problems.

A serial interface is often used for board-level communication between different integrated circuits, especially in space-constrained applications at low-to medium data-rates. The most popular serial interfaces are I²C and SPI™.

This application note describes I²C and SPI and some level-translation circuits that interface to them.

The SPI-bus has 4 signals: active-low CS = active-low Chip select, SCLK = Clock, D_{IN} = Data In, and D_{OUT} = Data Out.

Figure 1 illustrates the timing of these signals. The SPI-specification has a clock polarity (CPOL) and a clock phase (CPHA) bit. Figure 1 relates to the most common combination of these bits, CPOL = 0 (data-transfer on the rising clock edge) and CPHA = 0 (clock transitions in the middle of bit timing).

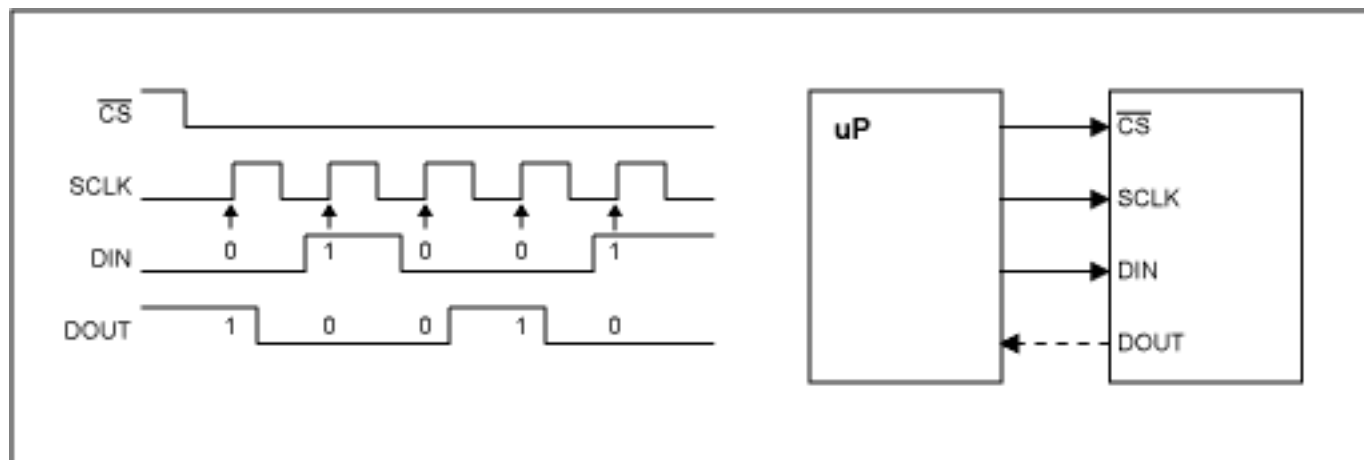


Figure 1. Signals and timing of the SPI-interface.

Several devices might be connected to the same bus, where all devices share the D_{IN} and SCLK-line. Each device has a separate chip-select signal, so that the μ P can address the appropriate part by the relevant active-low CS signal. If a chip does not talk back to the μ P (e.g., DAC), the D_{OUT}-line is not needed. The SPI-bus is well suited to data-rates to 20Mbps. Some devices (e.g., RTCs like the MAX6901) have a 3-wire interface, where the data-line is bi-directional. This interface is similar to SPI.

The I²C-bus has 2 signals: SCL = Clock and SDA = Data in/out.

Figure 2 illustrates the timing of the I²C-bus. Each device has a unique 7-bit or 10-bit address. As the data-line

is bi-directional, only 2 wires are required, which is an advantage in space-constrained applications or in designs where different parts of the circuit have to be optically isolated. Data-rates for the I²C-bus are 100kbps, 400kbps, or even μ P to 3.4Mbps for the high-speed mode. The I²C-bus requires pull-up resistors R_p , where the value of R_p depends on the supply-voltage and the bus-capacitance (number of devices connected to the bus and length of the bus).

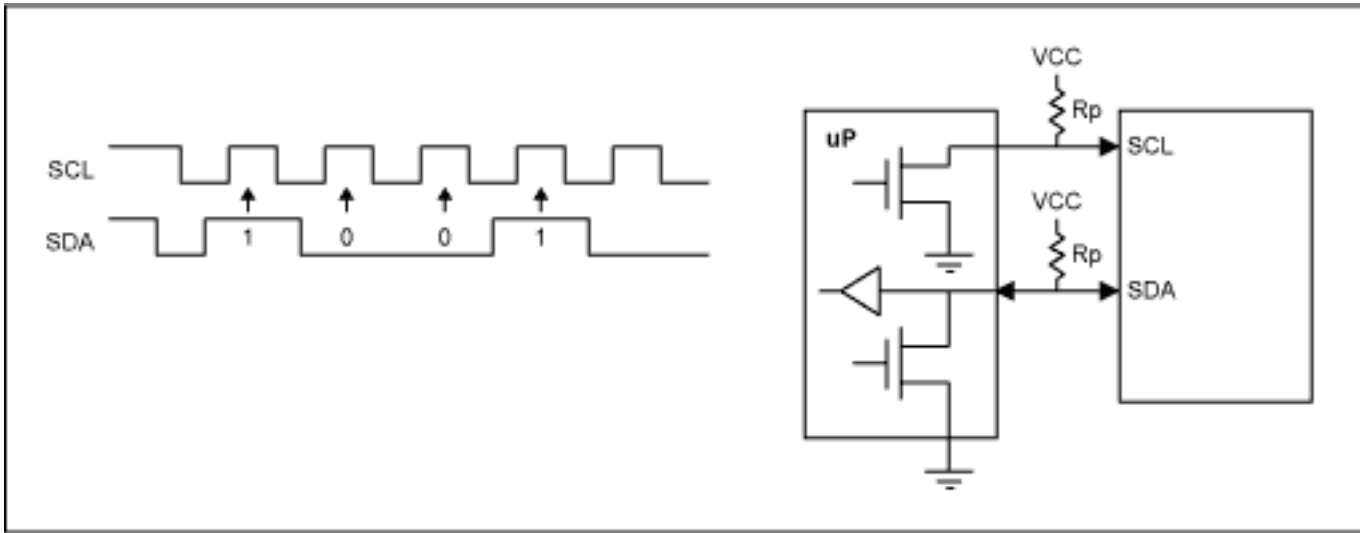


Figure 2. Signals and timing of the I²C-interface.

If a system has different supply voltages for the μ P and for peripheral devices, suitable level translators are required to be able to use one of these serial interfaces. There are several reasons why today's systems have two or more supply-voltages. High-speed μ Ps and DSPs are implemented on the most advanced processes to get maximum performance with the lowest power consumption. These processes are often limited to supply voltages of 3V or less. Typical core-voltages are 1.5V-2.5V. On the other hand, I/O-devices like DA-and AD-converters might have a supply-voltage of 3.3V or 5V to achieve the required dynamic range. In portable and low-power applications there is another reason to have the μ P run with the lowest possible supply voltage. Current consumption of a typical microprocessor depends on clock frequency and supply voltage. One way to achieve low current consumption is therefore to reduce the supply voltage. This also leads to the situation where the μ P runs from a different supply than other devices. Another reason for different supply voltages might be the use of ASICs or FPGAs together with a μ P. For all these applications the designer needs a uni- or bi-directional level translator for the bus signals.

Figure 3 shows a basic level translator with an N-channel MOSFET. If neither Q2 or Q3 pulls the data-line low, VGS of Q1 is 0V and Data 1.8 has a level of 1.8V, Data 3.3 is at 3.3V. If Q2 pulls Data 1.8 low, VGS of Q1 is 1.8V and will turn on Q1, pulling Data 3.3 low. If Q3 pulls Data 3.3 low, the body diode of Q1 will be forward-biased, pulling the source to 0.3V. VGS will be 1.5V and Q1 will turn on, pulling Data 1.8 low. So logic-levels are translated in both directions. We assume here that Q2 has zero on-resistance. For a real application we would have to consider this on-resistance, which is 133 Ω worst-case for an I²C-compatible output (0.4V at 3mA) or 22 Ω for the 74LVC125 buffer (0.55V at 24mA). In this case the voltage VGS to turn on Q1 would no longer be 1.8V, but would be lower, depending on R1 and the on-resistance of Q1.

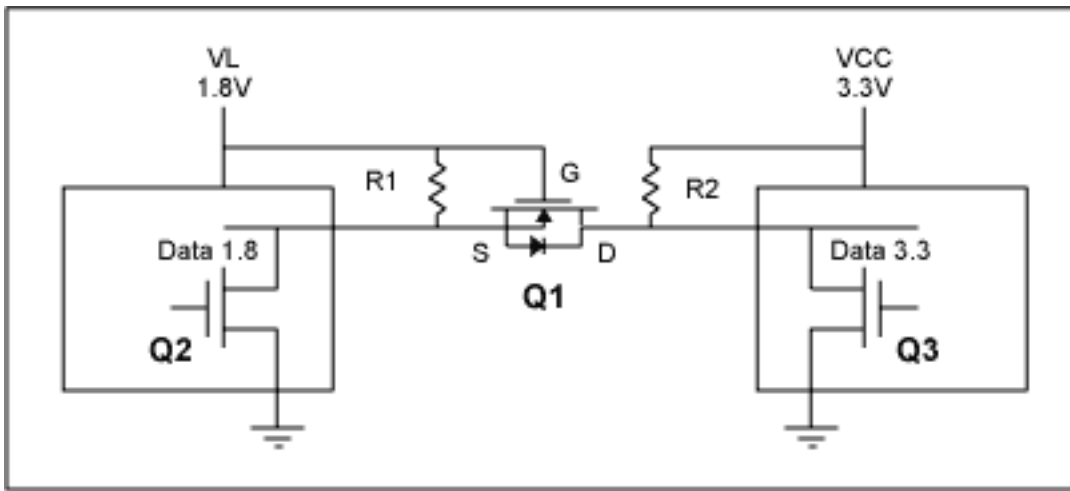


Figure 3. Basic level translator.

There are several problems associated with this circuit:

1. With VL being 1.8V or even lower, the choice of suitable MOSFETs with a low enough VGS threshold voltage is rather limited. One candidate might be the TN2501 from Supertex.
2. The slew-rate and, therefore, the maximum transmission rate depends on the value of R1/R2 and on the number of devices on the bus, which determines the capacitance. It is possible to increase the maximum transmission rate by choosing lower value resistors R1/R2. This will lead to higher current consumption, which is undesirable in portable/low-power applications.
3. With this simple circuit it is not possible to tristate the bus and disconnect R1/R2. Therefore one cannot switch off segments of the bus.

The MAX3372E-MAX3393E family of level translators solves these problems. **Figure 4** shows the simplified schematic of the MAX3373E, where two MOSFETs Q4 and Q5 have been added. Q4 and Q5 close for a short time during the rising edge and speed-up the low-to-high transition. Minimum guaranteed data-rate for the MAX3373E is 8Mbps, μP to 16Mbps is possible if $|V_{CC} - V_L| < 0.8\text{V}$. This family of level-translators has a three-state mode, where the pull-up resistors are disconnected. This makes them ideal in multidrop-networks or for controlling I²C-devices with the same address, where these devices are on different sections of the network, which are decoupled by a level translator.

The data-lines on the V_{CC}-side are $\pm 15\text{kV}$ ESD-protected, which is a valuable feature in applications where the bus is accessible on a connector and where ESD-strikes are likely to occur. A thermal-shutdown circuit puts these level-translators in the three-state mode if temperature exceeds 150°C.

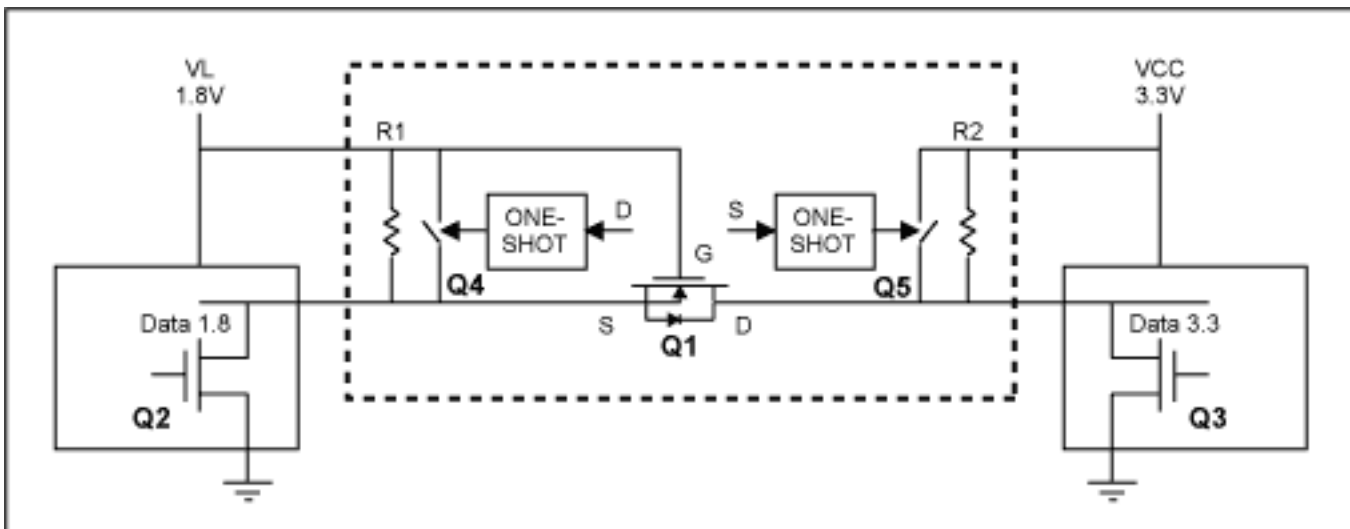


Figure 4. Improved level translator MAX3373E with speed-up circuit.

Typical Applications

Figure 5 shows a typical application for the MAX3390E level translator in a battery-powered measurement circuit. A MAX4194 low-power instrumentation amplifier amplifies the signal from the bridge. The signal is AD-converted by the MAX1270, a 12-bit 8 channel ADC. The supply voltage for the analog front-end is 5V, the low-power μP has a supply of 2.5V. The MAX3390E level shifts the SPI signals from 2.5V to 5V and from 5V to 2.5V for the D_{OUT} signal.

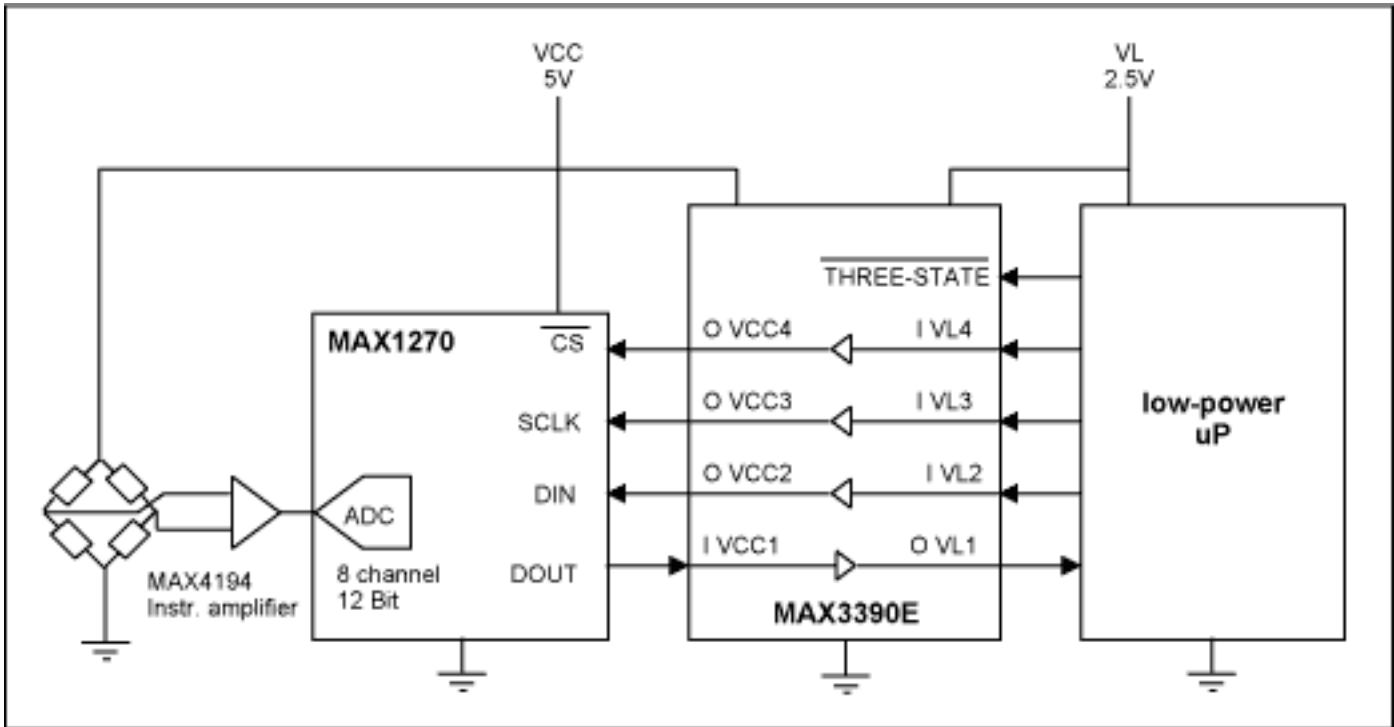


Figure 5. The MAX3390E level translator in an SPI-bus application.

Figure 6 shows a similar application with an I^2C -bus. The MAX3373E dual level translator is used to interface the μP I/O levels to the I^2C -compatible interface of the MAX1236 (4 channel 12 Bit ADC).

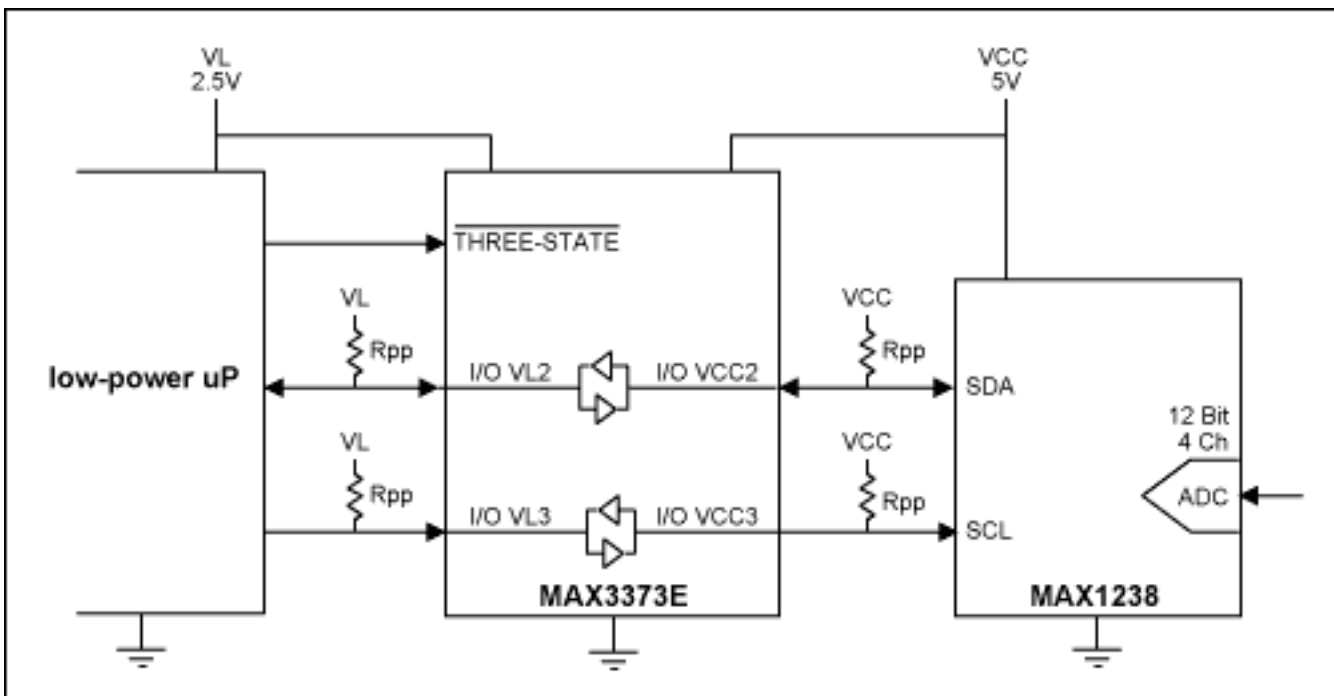


Figure 6. MAX3373E dual level translator used in an I²C-bus application with optional pull-up resistors R_{PP} .

Depending on the number of devices on the bus, optional pull-up resistors R_{PP} might be required. The MAX3372E-MAX3393E family of level translators has internal 10k Ω pull-up resistors. In **Figure 7** we can see that this is sufficient for a bus-capacitance of about 90pF, assuming we do not connect the optional resistor R_S ($R_S = 0$).

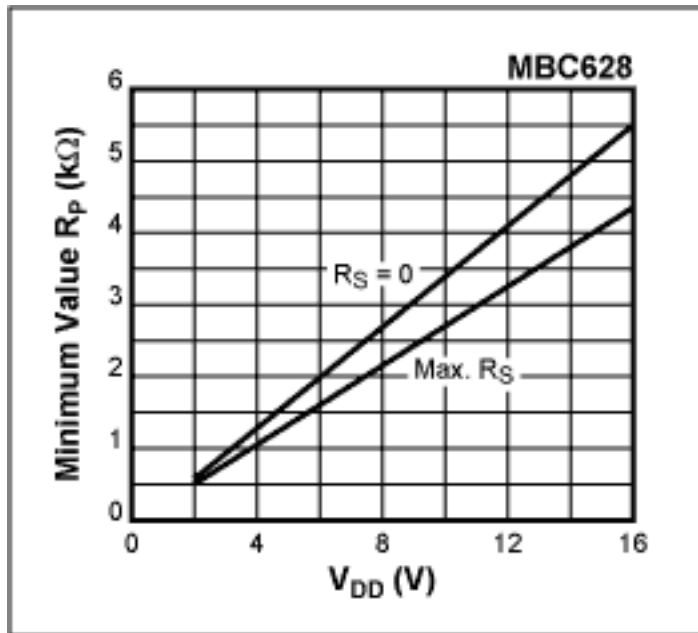


Figure 7. Maximum value of R_P as a function of bus capacitance for a standard-mode I²C-bus, from I²C-specification.

If there are several devices on the same bus or if the bus is relatively long (>30cm), it is necessary to use external pull-up resistors R_{PP} . **Figure 8** shows the minimum value of R_P , which is 1.7k Ω for $R_S = 0$ and $V_{DD} = 5V$. From this we find the minimum value for R_{PP} to be 2.2k Ω , so that R_{PP} in parallel with the internal pull-up of 10k Ω is 1.83k Ω .

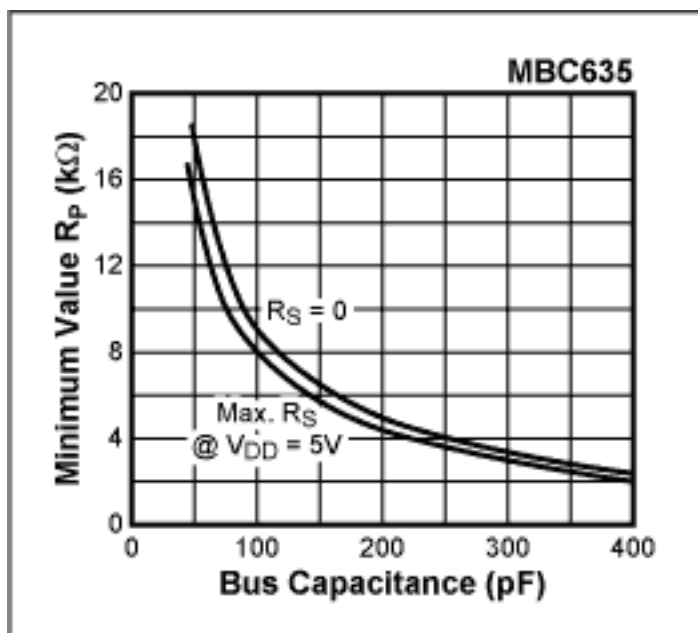


Figure 8. Minimum value of R_P as a function of supply voltage with the value of R_S as a parameter, from I²C-specification.

In summary, the MAX3372E-MAX3393E are ideal solutions to solve the I²C or SPI bus-level translation problems found in low-voltage systems. Guaranteed data rates, low power requirements, low-supply-voltage operability,

and small packages help solve the many problems facing designers in bus architectures today.

SPI is a trademark of Motorola, Inc.

Application Note 1159: <http://www.maxim-ic.com/an1159>

More Information

For technical questions and support: <http://www.maxim-ic.com/support>

For samples: <http://www.maxim-ic.com/samples>

Other questions and comments: <http://www.maxim-ic.com/contact>

Related Parts

MAX1236: [QuickView](#) -- [Full \(PDF\) Data Sheet](#) -- [Free Samples](#)

MAX1270: [QuickView](#) -- [Full \(PDF\) Data Sheet](#)

MAX3000E: [QuickView](#) -- [Full \(PDF\) Data Sheet](#) -- [Free Samples](#)

MAX3372E: [QuickView](#) -- [Full \(PDF\) Data Sheet](#) -- [Free Samples](#)

MAX3373E: [QuickView](#) -- [Full \(PDF\) Data Sheet](#) -- [Free Samples](#)

MAX3390E: [QuickView](#) -- [Full \(PDF\) Data Sheet](#) -- [Free Samples](#)

MAX4194: [QuickView](#) -- [Full \(PDF\) Data Sheet](#) -- [Free Samples](#)

AN1159, AN 1159, APP1159, Appnote1159, Appnote 1159

Copyright © by Maxim Integrated Products

Additional legal notices: <http://www.maxim-ic.com/legal>