

APPLICATION NOTE 1122

Optimizing Audio Bridged Tied Load Amplifiers

Abstract: This audio bridge-tied load (BTL) amplifier application note describes a unique architecture that minimizes the differential output distortion and noise (THD+N).

Low-voltage systems driving loudspeakers often employ a bridged-amplifier configuration that effectively doubles the voltage swing at the transducer (speaker). In a typical bridge-amplifier circuit (**Figure 1**), an AC-coupled inverting stage with gain drives one side of the speaker. It also drives a second unity-gain inverting amplifier, which drives the other side of the speaker.

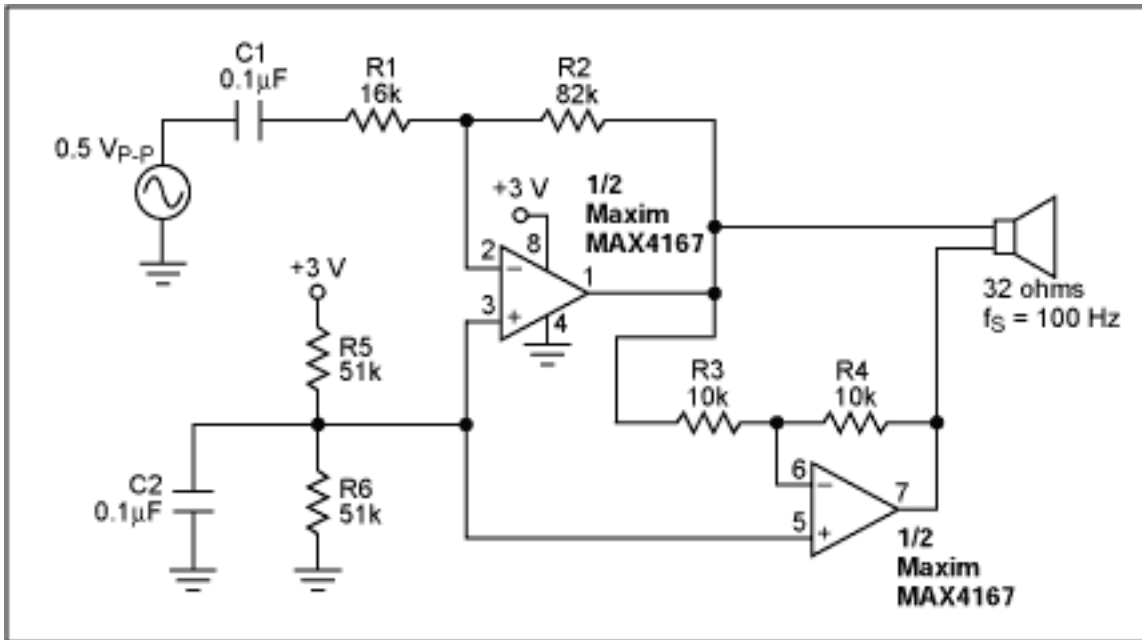


Figure 1. This conventional bridged amplifier features two amplifiers in tandem.

Bridged amplifiers usually incorporate a matched pair of amplifiers, but the first amplifier dominates overall performance because its output noise and distortion are replicated in the second amplifier. You can eliminate this drawback by placing the two amplifiers in a non-cascaded configuration, in which one is inverting and the other in non-inverting (**Figure 2**). Both amplify the same input signal, so neither one reproduces noise, distortion, or clipping introduced by the other.

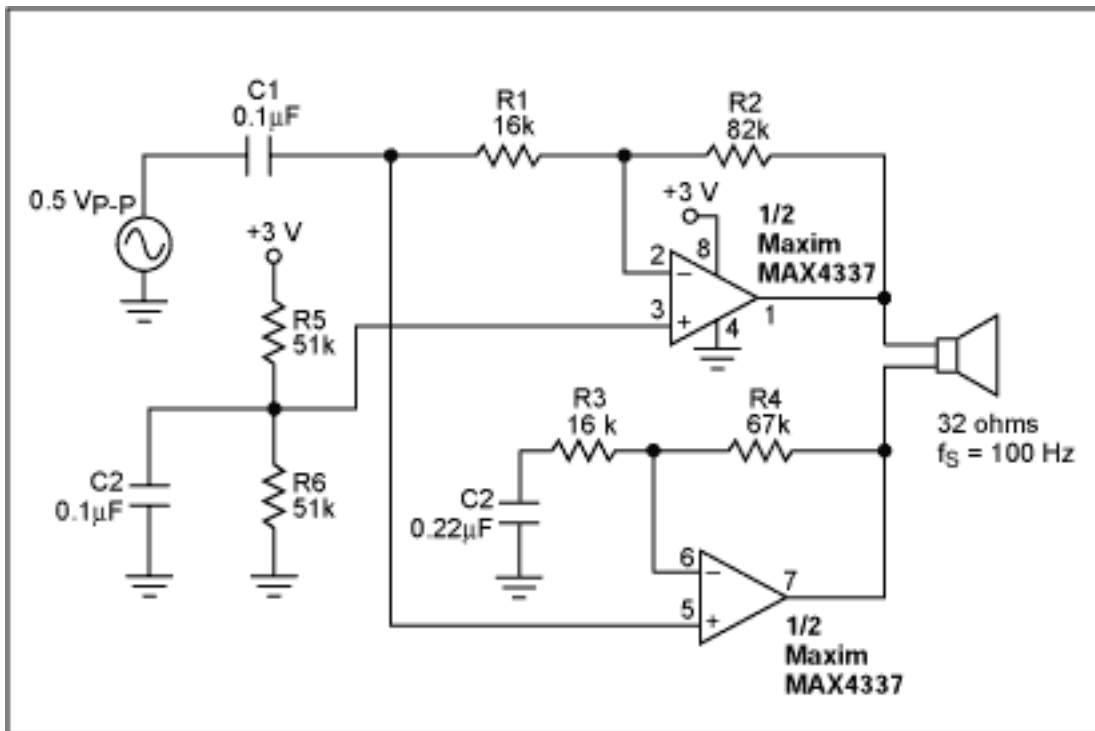


Figure 2. This circuit optimizes the Figure 1 configuration by apportioning gain between the two amplifiers.

As a key improvement in Figure 2, DC bias for the non-inverting circuit is derived from the inverting amplifier's source resistor. (Bias is required because the input is AC coupled). Using the other amplifier's source resistor as a bias source lowers the component count and eliminates signal injection into the high-impedance bias source ($V_{CC}/2$, applied to the top amplifier's non-inverting input).

Another advantage in Figure 2 is the elimination of DC gain in the non-inverting amplifier. For the circuit shown, C2 sets the -3dB point at half the input cutoff frequency, and R1/C1 sets the input highpass cutoff frequency at 100Hz.

A similar version of this article appeared in the November 19, 2001 issue of *Electronic Design* magazine.

Application Note 1122: <http://www.maxim-ic.com/an1122>

More Information

For technical questions and support: <http://www.maxim-ic.com/support>

For samples: <http://www.maxim-ic.com/samples>

Other questions and comments: <http://www.maxim-ic.com/contact>

Related Parts

MAX4167: [QuickView](#) -- [Full \(PDF\) Data Sheet](#) -- [Free Samples](#)

MAX4168: [QuickView](#) -- [Full \(PDF\) Data Sheet](#) -- [Free Samples](#)

MAX4337: [QuickView](#) -- [Full \(PDF\) Data Sheet](#) -- [Free Samples](#)

MAX4338: [QuickView](#) -- [Full \(PDF\) Data Sheet](#) -- [Free Samples](#)

MAX4366: [QuickView](#) -- [Full \(PDF\) Data Sheet](#)

MAX4369: [QuickView](#) -- [Full \(PDF\) Data Sheet](#)

AN1122, AN 1122, APP1122, Appnote1122, Appnote 1122

Copyright © by Maxim Integrated Products

Additional legal notices: <http://www.maxim-ic.com/legal>