



#### APPLICATION NOTE 1076

## Fail-Safe, Low-Speed, Variable-Reluctance Sensors

*Abstract: Technical brief describes construction of a variable-reluctance sensor for detecting low- or medium-speed events. A simple circuit is shown utilizing two channels of an ESD-protected RS-485 transceiver to deliver differential output data capable of providing fail-safe signals indicating sensor or cable malfunction.*

Variable-reluctance (VR) sensors are preferred for industrial and automotive environments because they withstand mechanical vibration and high-temperature operation up to 300°C. In most applications, they sense a steel target that is part of a rotating assembly. Because the unprocessed signal amplitude is proportional to target speed, a sensor whose signal-processing circuitry is designed for high speed will cease to function as rotation slows.

Hall-effect sensors are preferred for lower speeds (several pulses per second), but they require that a magnet be attached to the rotating assembly, making them prone to failure when the magnet is broken or damaged. Neither type (VR or Hall-effect) offers fail-safe detection of the processed signal in the event of failure in the cable or sensor.

The circuit of **Figure 1** is a fail-safe VR sensor suitable for low- to medium-speed operation. Comprising of L1, R1, and a quad RS-422/RS-485 receiver (IC1), it provides the complementary, independent output signals VOUT and Active-Low VOUT. Table 1 lists the resulting fail-safe modes. Supply voltage can be +10V, +12V, or the control system's +24V DC source.

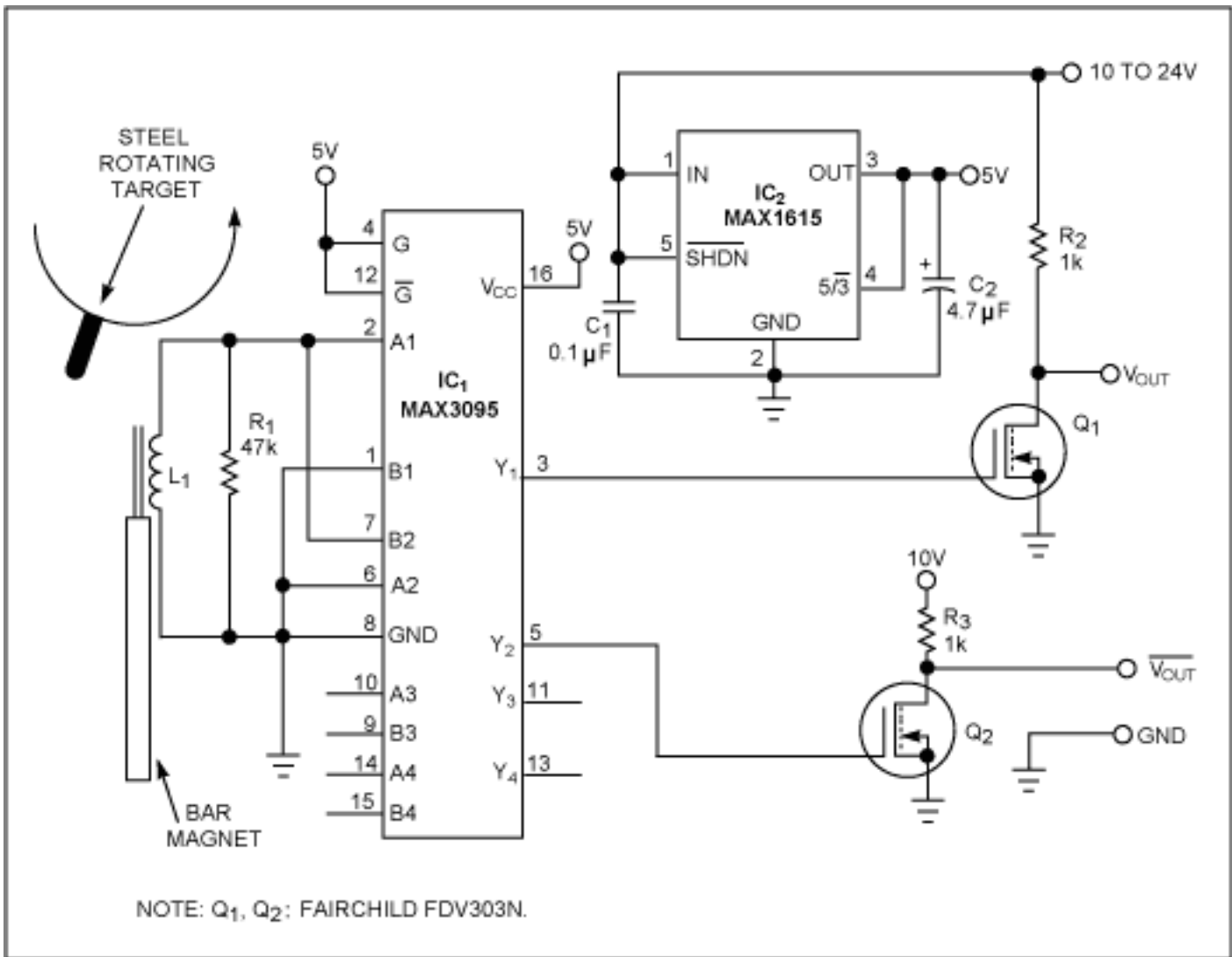


Figure 1. This circuit provides a fail-safe, low-to-medium-speed, variable-reluctance sensor.

Table 1. Fail-safe modes (two cycles of V<sub>OUT</sub> or Active-Low V<sub>OUT</sub>)

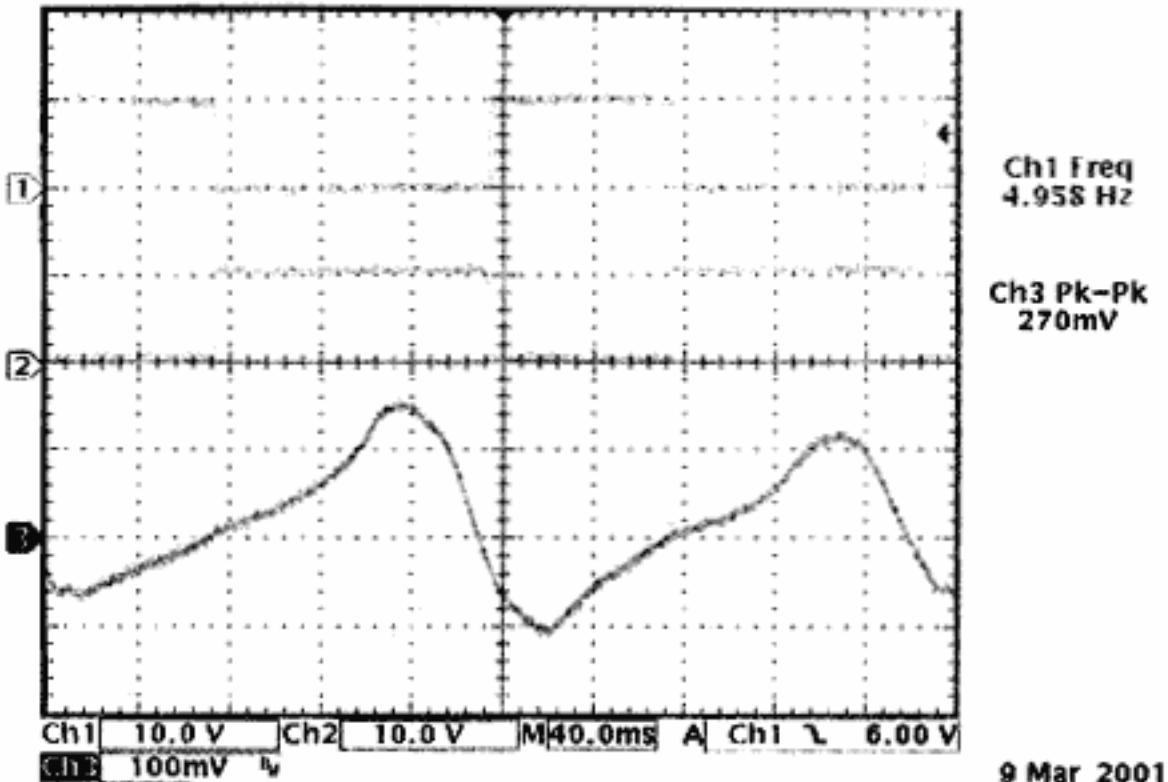
(V <sub>OUT</sub> , Active-Low V <sub>OUT</sub> )	Mode
(1,0) then (0,1), or (0,1) then (1,0)	Normal mode, both pulses valid
(1,0) then (0,0), or (0,0) then (1,0)	Failure, valid V <sub>OUT</sub> pulse, Active-Low V <sub>OUT</sub> failure, cable failure, or partial sensor failure*
(0,1) then (0,0), or (0,0) then (0,1)	Failure, valid Active-Low V <sub>OUT</sub> pulse, V <sub>OUT</sub> failure, cable failure, or partial sensor failure*
Always (1,1)	Short-circuited cables or failure in IC1
Always (0,0)	Severed cables, failure in IC1, or failure in Q1 and Q2

\*System remains functional in failure modes.

Coil L1 consists of 2600 turns of #32 magnet wire wound on a 0.800" steel bar of 0.200" diameter, with 0.125" protruding from the sensor face. A magnet attached to the back of the steel bar supplies necessary magnetic flux. The rotating target then causes a change in reluctance, hence a change in the amount of magnetic flux conducted, and therefore a change in the current induced in L1. R1 converts the L1 current to a time-varying voltage. This time varying voltage is applied to the inputs of IC1, whose wide input-voltage range ( $\pm 25V$ ), narrow input threshold ( $\pm 0.2$ ), and low input hysteresis (45mV typical) enable the VR sensor to operate at low speeds.

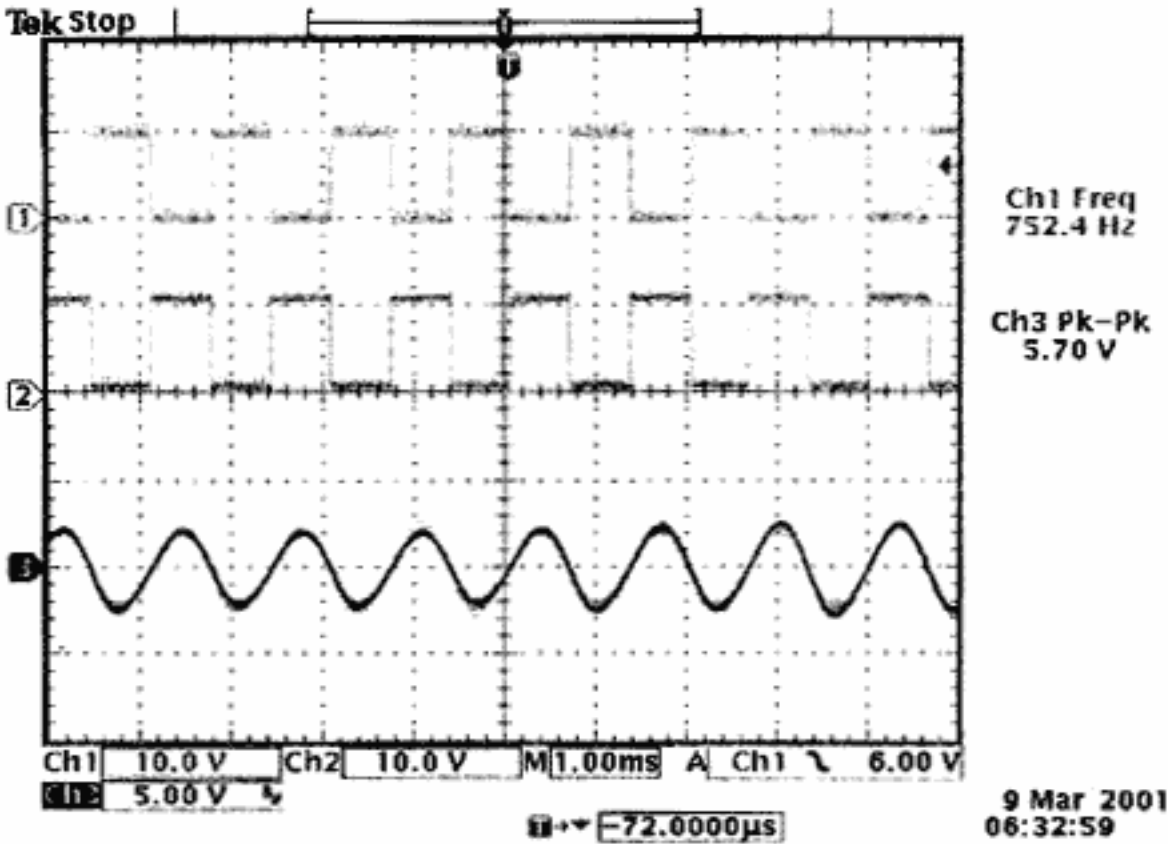
The separate and complementary outputs are derived from separate ESD-protected inputs. IC1 outputs Y1 and

Y2 can source up to 10mA of current. They alternately switch the logic-rated n-channel MOSFETs Q1 and Q2, which in turn provide VOUT and Active-Low VOUT. An LDO voltage regulator (IC2) generates the +5VDC required by IC1. **Figure 2** illustrates low- and medium-speed operation for the sensor.



9 Mar 2001  
06:22:04

a)



9 Mar 2001  
06:32:59

b)

Figure 2. These Figure 1 waveforms, produced by two targets 180° apart, illustrate low- and medium-speed operation: 4.9Hz at 2.4 revolutions/sec (a), and 752.4Hz at 376.2 revolutions/sec (b). Channel 1 is VOUT, Channel 2 is Active-Low VOUT, and Channel 3 is the voltage across R1.

For +5V-supply applications in which a microcontroller can be located close to the sensor, only L1, R1, and IC1 are required for a direct interface. For +3V applications, replace IC1 with a MAX3096 IC.

A similar version of this article appeared in the November 22, 2001 issue of *EDN* magazine.

---

Application Note 1076: <http://www.maxim-ic.com/an1076>

#### **More Information**

For technical questions and support: <http://www.maxim-ic.com/support>

For samples: <http://www.maxim-ic.com/samples>

Other questions and comments: <http://www.maxim-ic.com/contact>

#### **Related Parts**

MAX3095: [QuickView](#) -- [Full \(PDF\) Data Sheet](#) -- [Free Samples](#)

MAX3096: [QuickView](#) -- [Full \(PDF\) Data Sheet](#) -- [Free Samples](#)

AN1076, AN 1076, APP1076, Appnote1076, Appnote 1076

Copyright © by Maxim Integrated Products

Additional legal notices: <http://www.maxim-ic.com/legal>