

MINIATURE CELLPHONE UPCONVERTER/ DRIVER IC ELIMINATES SAW FILTER, USES ONLY 18mA!

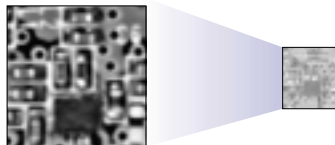
Ultra-CSP IC Puts Out +6.5dBm While Measuring Only 1.5mm x 2mm

The MAX2307 is designed for Japanese N-CDMA and PDC 900MHz applications. Its unique upconverter architecture eliminates a SAW filter at the expense of just one low-cost inductor. The device is packaged in an ultra-small CSP package and draws less current than comparable discrete designs, especially at 10dB backoff from peak power, the typical CDMA output power used for talk-time calculations.

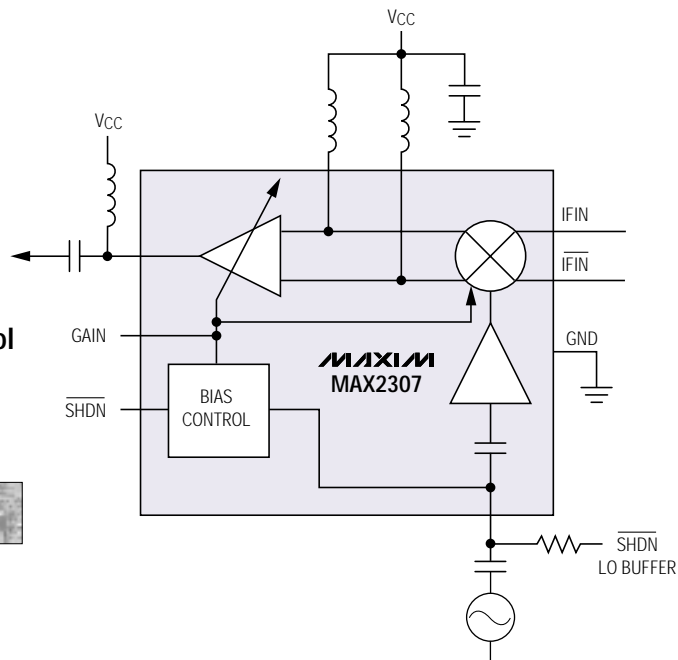
- ◆ Designed for 900MHz CDMA, PDC
- ◆ RX Band Noise Power
 - 134dBm/Hz (+6dBm Output)
 - 145dBm/Hz (-20dBm Output)
- ◆ Current Consumption
 - 34mA (+6dBm Output)
 - 18mA (-4dBm Output)
- ◆ 7mm x 8mm Total Implementation Size
- ◆ 23dB Gain Control Range
- ◆ -35dBc LO Leakage
- ◆ 30dB Image Suppression
- ◆ Separate VCO Buffer Control Minimizes Pulling



1.5mm x 2.0mm
ULTRA-CSP



The MAX2307 saves a SAW filter and occupies only 7mm x 8mm, including all external components.



FREE Wireless Design Guide—Sent Within 24 Hours!
Includes: Reply Cards for Free Samples and Data Sheets

CALL TOLL-FREE 1-800-998-8800 for a Design Guide or Free Sample
6:00 a.m. – 6:00 p.m. Pacific Time



www.maxim-ic.com

2000 EDITION!
FREE FULL-LINE DATA CATALOG
ON CD-ROM



NEW! Get Price, Delivery, and Place Orders
Online at www.maxim-ic.com

Maxim Integrated Products, 120 San Gabriel Drive, Sunnyvale, CA 94086, (408) 737-7600, FAX (408) 737-7194.

Distributed by Maxim Distribution, Arrow, Avnet Electronics Marketing, CAM RPC, Digi-Key, Elmo, Nu Horizons, and Zeus.

Distributed in Canada by Arrow and Avnet Electronics Marketing.

MAXIM is a registered trademark of Maxim Integrated Products. © 2001 Maxim Integrated Products.