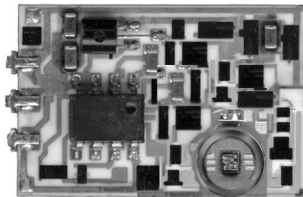


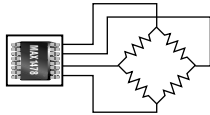
WORLD'S SMALLEST PRESSURE SENSOR SIGNAL CONDITIONER

Digital Trimming with On-Board EEPROM Eliminates Laser Trimming

CUT YOUR TIME TO MARKET WITH OUR FREE† CALIBRATION SYSTEM



Replace a Typical Laser-Trimmed Pressure Sensor...



...with the Digitally Trimmed MAX1478

- ◆ Tiny 16-Pin SSOP Package
- ◆ Low Cost
- ◆ 1% Accuracy* from -40°C to +125°C
- ◆ Rail-to-Rail® Inputs and Outputs (MAX1478)

The MAX1478 single-chip solution—with four on-board DACs and internal memory—eliminates the need for external trim resistors. It performs test and trim in a single operation to reduce test time and handling, while significantly reducing your product size and cost.

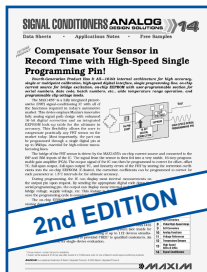
Choose a Maxim Sensor Signal Conditioner

PART	ACCURACY* (%)	FEATURES	PACKAGE
MAX1478	1.0	Current Source, PGA, 4 Adjustment DACs, On-Chip EEPROM, Rail-to-Rail Inputs and Outputs	16-pin SSOP
MAX1459	1.0	Current Source, PGA, 4 Adjustment DACs, On-Chip EEPROM, Auxiliary Op Amp, 4-20mA Loop Drive	20-pin SSOP
MAX1458	1.0	Current Source, PGA, 4 Adjustment DACs, On-Chip EEPROM, Automotive Diagnostics	16-pin SSOP
MAX1457	0.1	Current Source, PGA, 5 Adjustment DACs, Temperature ADC, Auxiliary Op Amp	32-pin TQFP
MAX1450	1.0	Current Source, PGA	20-pin SSOP

*Accuracy is limited by inherent repeatability of the sensor error, as well as sensor temperature nonlinearity errors.

† System will be leased at \$1.00 per year after receipt of 10,000-piece order for one of Maxim's smart signal-conditioning products.

Rail-to-Rail is a registered trademark of Nippon Motorola, Ltd.

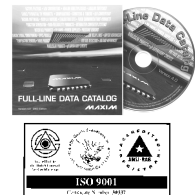


FREE Signal Conditioner Design Guide—Sent Within 24 Hours!
Includes: Reply Cards for Free Samples and Data Sheets

CALL TOLL-FREE 1-800-998-8800 for a Design Guide or Free Sample
6:00 a.m. – 6:00 p.m. Pacific Time

MAXIM
www.maxim-ic.com

2000 EDITION!
FREE FULL-LINE DATA CATALOG
ON CD-ROM



NEW! Get Price, Delivery, and Place Orders Online at www.maxim-ic.com

Maxim Integrated Products, 120 San Gabriel Drive, Sunnyvale, CA 94086, (408) 737-7600, FAX (408) 737-7194.

Distributed by Maxim Distribution, Arrow, Avnet Electronics Marketing, CAM RPC, Digi-Key, Elmo, Nu Horizons, and Zeus.
Distributed in Canada by Arrow and Avnet Electronics Marketing.

MAXIM is a registered trademark of Maxim Integrated Products. © 2000 Maxim Integrated Products.